

ACI Racing Weekend Mugello, 12-13 Luglio 2025

Porsche Carrera Cup Italia - Classifica Prove Libere

Aut.Int. Mugello 5.245 m

1 / 3

| Num. | Conduttore | Naz | Concorrente | Team | Auto | Classe | Tempo | Dist. | Rel. | Giri |
|------|----------------------------------|-----|---------------------------|---------------------------|-------------------------|--------|-----------------|-------|-------|------|
| 1 | 38 IAQUINTA Simone | ITA | Prima Ghinzani Motorsport | Prima Ghinzani Motorsport | Porsche 911 GT3 CUP 992 | | 1'50.247 | | | 24 |
| 2 | 8 MASTERS Keagan | ZAF | Ombra Racing | Team Q8 Hi-Perform | Porsche 911 GT3 CUP 992 | | 1'50.348 | 0.101 | 0.101 | 20 |
| 3 | 11 BRASCHI Francesco | ITA | Ombra Racing | Ombra Racing | Porsche 911 GT3 CUP 992 | | 1'50.445 | 0.198 | 0.097 | 21 |
| 4 | 3 CERQUI Alberto | ITA | Ebimotors | Ebimotors | Porsche 911 GT3 CUP 992 | | 1'50.645 | 0.398 | 0.200 | 16 |
| 5 | 28 AMATI Giorgio | ITA | Prima Ghinzani Motorsport | Prima Ghinzani Motorsport | Porsche 911 GT3 CUP 992 | | 1'50.707 | 0.460 | 0.062 | 20 |
| 6 | 13 TAUSCHER Alexander | DEU | Target Competition | Target Competition | Porsche 911 GT3 CUP 992 | | 1'50.795 | 0.548 | 0.088 | 23 |
| 7 | 35 DELLI GUANTI Pietro | ITA | Archesse Racing | Archesse Racing | Porsche 911 GT3 CUP 992 | R | 1'50.864 | 0.617 | 0.069 | 15 |
| 8 | 21 BERTONELLI Diego | ITA | The Driving Experiences | The Driving Experiences | Porsche 911 GT3 CUP 992 | | 1'50.893 | 0.646 | 0.029 | 22 |
| 9 | 14 ZENDELI Lirim | DEU | BeDriver | BeDriver | Porsche 911 GT3 CUP 992 | | 1'50.995 | 0.748 | 0.102 | 20 |
| 10 | 34 SCHOUTEN Dirk | NLD | Dinamic Motorsport | Dinamic Motorsport | Porsche 911 GT3 CUP 992 | | 1'51.034 | 0.787 | 0.039 | 24 |
| 11 | 32 QUARESMINI Gianmarco | ITA | Malucelli Motorsport | Malucelli Motorsport | Porsche 911 GT3 CUP 992 | | 1'51.349 | 1.102 | 0.315 | 21 |
| 12 | 15 FESTANTE Aldo | ITA | Dinamic Motorsport | Dinamic Motorsport | Porsche 911 GT3 CUP 992 | | 1'51.409 | 1.162 | 0.060 | 21 |
| 13 | 46 PUJATTI Nicholas | ITA | The Driving Experiences | The Driving Experiences | Porsche 911 GT3 CUP 992 | | 1'51.419 | 1.172 | 0.010 | 19 |
| 14 | 5 KLEIN Marvin | FRA | BeDriver | BeDriver | Porsche 911 GT3 CUP 992 | | 1'51.550 | 1.303 | 0.131 | 23 |
| 15 | 24 FANT Filippo | ITA | Archesse Racing | Archesse Racing | Porsche 911 GT3 CUP 992 | | 1'51.612 | 1.365 | 0.062 | 23 |
| 16 | 51 GNEMMI Paolo | ITA | Ebimotors | Ebimotors | Porsche 911 GT3 CUP 992 | MC | 1'51.637 | 1.390 | 0.025 | 21 |
| 17 | 19 HOFFNER Hjelte | DNK | Malucelli Motorsport | Malucelli Motorsport | Porsche 911 GT3 CUP 992 | R | 1'51.700 | 1.453 | 0.063 | 21 |
| 18 | 30 SCHAAP Nathan | NLD | Target Competition | Target Competition | Porsche 911 GT3 CUP 992 | R | 1'51.787 | 1.540 | 0.087 | 23 |
| 19 | 9 SEYFFERT Jan | DEU | Target Competition | Target Competition | Porsche 911 GT3 CUP 992 | R | 1'51.892 | 1.645 | 0.105 | 26 |
| 20 | 52 DE AMICIS Alberto | ITA | Ebimotors | Ebimotors | Porsche 911 GT3 CUP 992 | MC | 1'51.917 | 1.670 | 0.025 | 16 |
| 21 | 12 MARTINEZ Luciano | ARG | Ombra Racing | Ombra Racing | Porsche 911 GT3 CUP 992 | R | 1'51.932 | 1.685 | 0.015 | 21 |
| 22 | 26 MARCHIANTE Mattia | ITA | Omnia Racing | Omnia Racing | Porsche 911 GT3 CUP 992 | R | 1'51.988 | 1.741 | 0.056 | 24 |
| 23 | 54 STEFANELLI Stefano | ITA | Malucelli Motorsport | Malucelli Motorsport | Porsche 911 GT3 CUP 992 | MC | 1'52.139 | 1.892 | 0.151 | 24 |
| 24 | 18 MEZZETTI William | ITA | Enrico Fulgenzi Racing | Enrico Fulgenzi Racing | Porsche 911 GT3 CUP 992 | R | 1'52.189 | 1.942 | 0.050 | 18 |
| 25 | 33 TITARENKO Sergey | | BeDriver | BeDriver | Porsche 911 GT3 CUP 992 | R | 1'52.250 | 2.003 | 0.061 | 21 |
| 26 | 27 GUIRRERI Giuseppe | ITA | Prima Ghinzani Motorsport | Prima Ghinzani Motorsport | Porsche 911 GT3 CUP 992 | | 1'52.315 | 2.068 | 0.065 | 18 |
| 27 | 23 SEGRE Matteo | ITA | Ombra Racing | Ombra Racing | Porsche 911 GT3 CUP 992 | R | 1'52.315 | 2.068 | | 20 |
| 28 | 67 DE GIACOMI Alex | ITA | Sc. Villorba Corse | Sc. Villorba Corse | Porsche 911 GT3 CUP 992 | MC | 1'52.773 | 2.526 | 0.458 | 22 |
| 29 | 88 GIRONDI Andrea | ITA | Enrico Fulgenzi Racing | Enrico Fulgenzi Racing | Porsche 911 GT3 CUP 992 | MC | 1'52.819 | 2.572 | 0.046 | 22 |
| 30 | 50 FENICI Francesco Maria | ITA | The Driving Experiences | The Driving Experiences | Porsche 911 GT3 CUP 992 | MC | 1'53.680 | 3.433 | 0.861 | 23 |
| 31 | 20 YILDIRIM Bati | TUR | Omnia Racing | Omnia Racing | Porsche 911 GT3 CUP 992 | R | 1'53.926 | 3.679 | 0.246 | 23 |
| 32 | 25 CHELI Lorenzo | SMR | Dinamic Motorsport | Dinamic Motorsport | Porsche 911 GT3 CUP 992 | R | 1'54.046 | 3.799 | 0.120 | 19 |
| 33 | 80 MOWLE Lee | GBR | BeDriver | BeDriver | Porsche 911 GT3 CUP 992 | MC | 1'54.707 | 4.460 | 0.661 | 21 |

| | | | |
|------------|-----|-------|------|
| Umidità | 31% | Aria | 29°C |
| Condizioni | DRY | Pista | 48°C |

Direttore di Gara : Antonio Canu

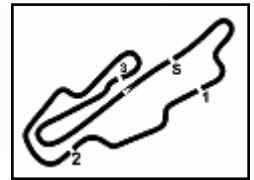
Direttore di Prova : Massimiliano Ghinassi

Inizio 11/07/2025 15:30
Fine 16:31

Esposta alle:

Powered by FICR PERUGIA TIMING





ACI Racing Weekend Mugello, 12-13 Luglio 2025

Porsche Carrera Cup Italia - Classifica Prove Libere

Penalty and Infringement

| | | | |
|-------|----|-----------------|---|
| 15.34 | 38 | S. IAQUINTA | #38 Time Deleted (1'57.118) - Exceeded Track Limits T13 |
| 15.34 | 33 | S. TITARENKO | #33 Time Deleted (1'56.896) - Exceeded Track Limits T13 |
| 15.35 | 21 | D. BERTONELLI | #21 Time Deleted (2'00.811) - Exceeded Track Limits T15 |
| 15.35 | 20 | B. YILDIRIM | #20 Time Deleted (2'10.020) - Exceeded Track Limits T15 |
| 15.36 | 38 | S. IAQUINTA | #38 Time Deleted (1'54.098) - Exceeded Track Limits T13 |
| 15.36 | 5 | M. KLEIN | #5 Time Deleted (1'53.919) - Exceeded Track Limits T13 |
| 15.36 | 21 | D. BERTONELLI | #21 Time Deleted (1'54.675) - Exceeded Track Limits T14 |
| 15.36 | 46 | N. PUJATTI | #46 Time Deleted (1'56.315) - Exceeded Track Limits T15 |
| 15.37 | 18 | W. MEZZETTI | #18 Time Deleted (1'54.630) - Exceeded Track Limits T14 |
| 15.38 | 54 | S. STEFANELLI | #54 Time Deleted (1'55.614) - Exceeded Track Limits T14 |
| 15.38 | 19 | H. HOFFNER | #19 Time Deleted (1'53.484) - Exceeded Track Limits T14 |
| 15.39 | 88 | A. GIRONDI | #88 Time Deleted (1'53.747) - Exceeded Track Limits T4 |
| 15.39 | 19 | H. HOFFNER | #19 Time Deleted (1'54.315) - Exceeded Track Limits T4 |
| 15.40 | 12 | L. MARTINEZ | #12 Time Deleted (1'55.175) - Exceeded Track Limits T4 |
| 15.40 | 28 | G. AMATI | #28 Time Deleted (2'09.119) - Exceeded Track Limits T15 |
| 15.40 | 21 | D. BERTONELLI | #21 Time Deleted (1'53.111) - Exceeded Track Limits T15 |
| 15.41 | 88 | A. GIRONDI | #88 Time Deleted (1'54.998) - Exceeded Track Limits T4 |
| 15.42 | 8 | G. AMATI | #28 Time Deleted (1'53.701) - Exceeded Track Limits T14 |
| 15.42 | 26 | M. MARCHIANTE | #26 Time Deleted (1'54.092) - Exceeded Track Limits T14 |
| 15.43 | 51 | P. GNEMMI | #51 Time Deleted (1'56.182) - Exceeded Track Limits T13 |
| 15.43 | 3 | A. CERQUI | #3 Time Deleted (1'53.042) - Exceeded Track Limits T14 |
| 15.44 | 28 | G. AMATI | #28 Time Deleted (1'52.848) - Exceeded Track Limits T15 |
| 15.44 | 67 | A. DE GIACOMI | #67 Time Deleted (1'54.552) - Exceeded Track Limits T4 |
| 15.44 | 54 | S. STEFANELLI | #54 Time Deleted (1'53.983) - Exceeded Track Limits T13 |
| 15.44 | 9 | J. SEYFFERT | #9 Time Deleted (1'53.940) - Exceeded Track Limits T4 |
| 15.44 | 26 | M. MARCHIANTE | #26 Time Deleted (1'53.041) - Exceeded Track Limits T14 |
| 15.45 | 20 | B. YILDIRIM | #20 Time Deleted (1'58.349) - Exceeded Track Limits T15 |
| 15.45 | 30 | N. SCHAAP | #30 Time Deleted (1'53.538) - Exceeded Track Limits T15 |
| 15.46 | 26 | M. MARCHIANTE | #26 Time Deleted (1'53.103) - Exceeded Track Limits T14 |
| 15.48 | 46 | N. PUJATTI | #46 Time Deleted (2'04.774) - Exceeded Track Limits T14 |
| 15.50 | 21 | D. BERTONELLI | #21 Time Deleted (1'53.411) - Exceeded Track Limits T14 |
| 15.50 | 26 | M. MARCHIANTE | #26 Time Deleted (1'54.063) - Exceeded Track Limits T15 |
| 15.52 | 30 | N. SCHAAP | #30 Time Deleted (2'04.506) - Exceeded Track Limits T14 |
| 15.52 | 8 | K. MASTERS | #8 Time Deleted (2'03.204) - Exceeded Track Limits T14 |
| 15.53 | 9 | J. SEYFFERT | #9 Time Deleted (1'54.101) - Exceeded Track Limits T4 |
| 15.54 | 54 | S. STEFANELLI | #54 Time Deleted (2'09.769) - Exceeded Track Limits T14 |
| 15.55 | 14 | L. ZENDELI | #14 Time Deleted (1'53.293) - Exceeded Track Limits T15 |
| 15.56 | 54 | S. STEFANELLI | #54 Time Deleted (1'59.812) - Exceeded Track Limits T14 |
| 15.57 | 9 | J. SEYFFERT | #9 Time Deleted (1'53.483) - Exceeded Track Limits T15 |
| 15.57 | 35 | P. DELLI GUANTI | #35 Time Deleted (1'53.576) - Exceeded Track Limits T15 |
| 15.57 | 12 | L. MARTINEZ | #12 Time Deleted (1'54.424) - Exceeded Track Limits T15 |
| 15.58 | 19 | H. HOFFNER | #19 Time Deleted (1'53.060) - Exceeded Track Limits T4 |
| 15.59 | 35 | P. DELLI GUANTI | #35 Time Deleted (1'53.033) - Exceeded Track Limits T15 |
| 15.59 | 12 | L. MARTINEZ | #12 Time Deleted (1'54.902) - Exceeded Track Limits T15 |
| 16.00 | 25 | L. CHELI | #25 Time Deleted (1'59.194) - Exceeded Track Limits T15 |
| 16.00 | 35 | P. DELLI GUANTI | #35 Time Deleted (1'52.619) - Exceeded Track Limits T15 |
| 16.01 | | | RED FLAG |
| 16.10 | 15 | A. FESTANTE | #15 Time Deleted (1'53.714) - Exceeded Track Limits T15 |
| 16.11 | 27 | G. GUIRRERI | #27 Time Deleted (1'55.859) - Exceeded Track Limits T15 |
| 16.12 | 23 | M. SEGRE | #23 Time Deleted (1'52.685) - Exceeded Track Limits T14 |
| 16.13 | 33 | S. TITARENKO | #33 Time Penalty 10 Minutes in Pit |
| 16.14 | 46 | N. PUJATTI | #46 Time Penalty 10 Minutes Stop Pit |
| 16.15 | 13 | A. TAUSCHER | #13 Time Deleted (1'52.966) - Exceeded Track Limits T14 |
| 16.16 | 26 | M. MARCHIANTE | #26 Time Deleted (2'07.051) - Exceeded Track Limits T15 |
| 16.18 | 25 | L. CHELI | #25 Time Deleted (1'57.716) - Exceeded Track Limits T15 |
| 16.21 | 23 | M. SEGRE | #23 Time Deleted (1'52.314) - Exceeded Track Limits T15 |
| 16.24 | 21 | D. BERTONELLI | #21 Time Deleted (2'04.395) - Exceeded Track Limits T15 |
| 16.26 | 27 | G. GUIRRERI | #27 Time Deleted (2'01.867) - Exceeded Track Limits T15 |
| 16.26 | 46 | N. PUJATTI | #46 Time Deleted (2'05.024) - Exceeded Track Limits T15 |
| 16.27 | 46 | N. PUJATTI | #46 Time Deleted (1'51.988) - Exceeded Track Limits T4 |
| 16.28 | 21 | D. BERTONELLI | #21 Time Deleted (1'51.630) - Exceeded Track Limits T14 |

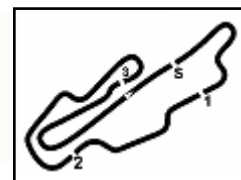
Direttore di Gara : Antonio Canu

Direttore di Prova : Massimiliano Ghinassi

Inizio 11/07/2025 15:30
Fine 16:31

Esposta alle:





ACI Racing Weekend Mugello, 12-13 Luglio 2025

Porsche Carrera Cup Italia - Classifica Prove Libere

Aut.Int. Mugello 5.245 m

3 / 3

Fastest Laps Sequence

| Num. | Concorrente | Naz | Team | Auto | Local Time | Tempo | Dist. | Media |
|------|---------------|-----|---------------------------|-------------------------|--------------|-----------------|--------|---------|
| 5 | M. KLEIN | FRA | BeDriver | Porsche 911 GT3 CUP 992 | 15:34'26.360 | 1'56.087 | | 162,654 |
| 14 | L. ZENDELI | DEU | BeDriver | Porsche 911 GT3 CUP 992 | 15:36'24.272 | 1'55.029 | -1.058 | 164,150 |
| 34 | D. SCHOUTEN | NLD | Dinamic Motorsport | Porsche 911 GT3 CUP 992 | 15:37'13.138 | 1'53.667 | -1.362 | 166,117 |
| 5 | M. KLEIN | FRA | BeDriver | Porsche 911 GT3 CUP 992 | 15:38'13.581 | 1'53.302 | -0.365 | 166,652 |
| 32 | G. QUARESMINI | ITA | Malucelli Motorsport | Porsche 911 GT3 CUP 992 | 15:38'53.107 | 1'52.831 | -0.471 | 167,348 |
| 34 | D. SCHOUTEN | NLD | Dinamic Motorsport | Porsche 911 GT3 CUP 992 | 15:39'05.798 | 1'52.660 | -0.171 | 167,602 |
| 13 | A. TAUSCHER | DEU | Target Competition | Porsche 911 GT3 CUP 992 | 15:40'37.732 | 1'52.106 | -0.554 | 168,430 |
| 15 | A. FESTANTE | ITA | Dinamic Motorsport | Porsche 911 GT3 CUP 992 | 15:40'42.217 | 1'51.409 | -0.697 | 169,484 |
| 11 | F. BRASCHI | ITA | Ombra Racing | Porsche 911 GT3 CUP 992 | 16:13'40.916 | 1'50.445 | -0.964 | 170,963 |
| 8 | K. MASTERS | ZAF | Team Q8 Hi-Perform | Porsche 911 GT3 CUP 992 | 16:18'19.743 | 1'50.432 | -0.013 | 170,983 |
| 38 | S. IAQUINTA | ITA | Prima Ghinzani Motorsport | Porsche 911 GT3 CUP 992 | 16:21'53.734 | 1'50.247 | -0.185 | 171,270 |

Direttore di Gara : Antonio Canu

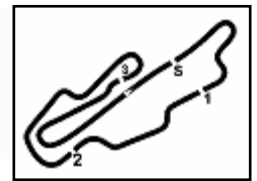
Direttore di Prova : Massimiliano Ghinassi

11/07/2025 Inizio 15:30 Fine 16:31

Esposta alle:

Powered by FICr PERUGIA TIMING





MIGLIOR GIRO

| | | | |
|----|----------------------------------|-------------------------|----------|
| 1 | 38 IAQUINTA Simone | Porsche 911 GT3 CUP 992 | 1'50.247 |
| 2 | 8 MASTERS Keagan | Porsche 911 GT3 CUP 992 | 1'50.348 |
| 3 | 11 BRASCHI Francesco | Porsche 911 GT3 CUP 992 | 1'50.445 |
| 4 | 3 CERQUI Alberto | Porsche 911 GT3 CUP 992 | 1'50.645 |
| 5 | 28 AMATI Giorgio | Porsche 911 GT3 CUP 992 | 1'50.707 |
| 6 | 13 TAUSCHER Alexander | Porsche 911 GT3 CUP 992 | 1'50.795 |
| 7 | 35 DELLI GUANTI Pietro | Porsche 911 GT3 CUP 992 | 1'50.864 |
| 8 | 21 BERTONELLI Diego | Porsche 911 GT3 CUP 992 | 1'50.893 |
| 9 | 14 ZENDELI Lirim | Porsche 911 GT3 CUP 992 | 1'50.995 |
| 10 | 34 SCHOUTEN Dirk | Porsche 911 GT3 CUP 992 | 1'51.034 |
| 11 | 32 QUARESMINI Gianmarco | Porsche 911 GT3 CUP 992 | 1'51.349 |
| 12 | 15 FESTANTE Aldo | Porsche 911 GT3 CUP 992 | 1'51.409 |
| 13 | 46 PUJATTI Nicholas | Porsche 911 GT3 CUP 992 | 1'51.419 |
| 14 | 5 KLEIN Marvin | Porsche 911 GT3 CUP 992 | 1'51.550 |
| 15 | 24 FANT Filippo | Porsche 911 GT3 CUP 992 | 1'51.612 |
| 16 | 51 GNEMMI Paolo | Porsche 911 GT3 CUP 992 | 1'51.637 |
| 17 | 19 HOFFNER Hjelte | Porsche 911 GT3 CUP 992 | 1'51.700 |
| 18 | 30 SCHAAP Nathan | Porsche 911 GT3 CUP 992 | 1'51.787 |
| 19 | 9 SEYFFERT Jan | Porsche 911 GT3 CUP 992 | 1'51.892 |
| 20 | 52 DE AMICIS Alberto | Porsche 911 GT3 CUP 992 | 1'51.917 |
| 21 | 12 MARTINEZ Luciano | Porsche 911 GT3 CUP 992 | 1'51.932 |
| 22 | 26 MARCHIANTE Mattia | Porsche 911 GT3 CUP 992 | 1'51.988 |
| 23 | 54 STEFANELLI Stefano | Porsche 911 GT3 CUP 992 | 1'52.139 |
| 24 | 18 MEZZETTI William | Porsche 911 GT3 CUP 992 | 1'52.189 |
| 25 | 33 TITARENKO Sergey | Porsche 911 GT3 CUP 992 | 1'52.250 |
| 26 | 23 SEGRE Matteo | Porsche 911 GT3 CUP 992 | 1'52.315 |
| 27 | 27 GUIRRERI Giuseppe | Porsche 911 GT3 CUP 992 | 1'52.315 |
| 28 | 67 DE GIACOMI Alex | Porsche 911 GT3 CUP 992 | 1'52.773 |
| 29 | 88 GIRONDI Andrea | Porsche 911 GT3 CUP 992 | 1'52.819 |
| 30 | 50 FENICI Francesco Maria | Porsche 911 GT3 CUP 992 | 1'53.680 |
| 31 | 20 YILDIRIM Bati | Porsche 911 GT3 CUP 992 | 1'53.926 |
| 32 | 25 CHELI Lorenzo | Porsche 911 GT3 CUP 992 | 1'54.046 |
| 33 | 80 MOWLE Lee | Porsche 911 GT3 CUP 992 | 1'54.707 |

SPEED

| | | | |
|----|----------------------------------|-------------------------|-------|
| 1 | 13 TAUSCHER Alexander | Porsche 911 GT3 CUP 992 | 264,1 |
| 2 | 15 FESTANTE Aldo | Porsche 911 GT3 CUP 992 | 264,1 |
| 3 | 26 MARCHIANTE Mattia | Porsche 911 GT3 CUP 992 | 262,8 |
| 4 | 23 SEGRE Matteo | Porsche 911 GT3 CUP 992 | 262,8 |
| 5 | 8 MASTERS Keagan | Porsche 911 GT3 CUP 992 | 262,8 |
| 6 | 24 FANT Filippo | Porsche 911 GT3 CUP 992 | 262,8 |
| 7 | 28 AMATI Giorgio | Porsche 911 GT3 CUP 992 | 262,8 |
| 8 | 46 PUJATTI Nicholas | Porsche 911 GT3 CUP 992 | 262,8 |
| 9 | 88 GIRONDI Andrea | Porsche 911 GT3 CUP 992 | 262,8 |
| 10 | 20 YILDIRIM Bati | Porsche 911 GT3 CUP 992 | 262,8 |
| 11 | 3 CERQUI Alberto | Porsche 911 GT3 CUP 992 | 262,1 |
| 12 | 21 BERTONELLI Diego | Porsche 911 GT3 CUP 992 | 262,1 |
| 13 | 14 ZENDELI Lirim | Porsche 911 GT3 CUP 992 | 261,5 |
| 14 | 34 SCHOUTEN Dirk | Porsche 911 GT3 CUP 992 | 261,5 |
| 15 | 12 MARTINEZ Luciano | Porsche 911 GT3 CUP 992 | 261,5 |
| 16 | 52 DE AMICIS Alberto | Porsche 911 GT3 CUP 992 | 261,5 |
| 17 | 50 FENICI Francesco Maria | Porsche 911 GT3 CUP 992 | 261,5 |
| 18 | 51 GNEMMI Paolo | Porsche 911 GT3 CUP 992 | 261,5 |
| 19 | 27 GUIRRERI Giuseppe | Porsche 911 GT3 CUP 992 | 261,5 |
| 20 | 11 BRASCHI Francesco | Porsche 911 GT3 CUP 992 | 261,5 |
| 21 | 30 SCHAAP Nathan | Porsche 911 GT3 CUP 992 | 261,5 |
| 22 | 32 QUARESMINI Gianmarco | Porsche 911 GT3 CUP 992 | 260,9 |
| 23 | 9 SEYFFERT Jan | Porsche 911 GT3 CUP 992 | 260,9 |
| 24 | 25 CHELI Lorenzo | Porsche 911 GT3 CUP 992 | 260,2 |
| 25 | 18 MEZZETTI William | Porsche 911 GT3 CUP 992 | 260,2 |
| 26 | 54 STEFANELLI Stefano | Porsche 911 GT3 CUP 992 | 260,2 |
| 27 | 5 KLEIN Marvin | Porsche 911 GT3 CUP 992 | 260,2 |
| 28 | 38 IAQUINTA Simone | Porsche 911 GT3 CUP 992 | 260,2 |
| 29 | 19 HOFFNER Hjelte | Porsche 911 GT3 CUP 992 | 260,2 |
| 30 | 33 TITARENKO Sergey | Porsche 911 GT3 CUP 992 | 259,6 |
| 31 | 35 DELLI GUANTI Pietro | Porsche 911 GT3 CUP 992 | 259,0 |
| 32 | 67 DE GIACOMI Alex | Porsche 911 GT3 CUP 992 | 259,0 |
| 33 | 80 MOWLE Lee | Porsche 911 GT3 CUP 992 | 257,1 |

SEG. 1

| | | |
|----|----------------------------------|--------|
| 1 | 11 BRASCHI Francesco | 26.524 |
| 2 | 13 TAUSCHER Alexander | 26.529 |
| 3 | 3 CERQUI Alberto | 26.583 |
| 4 | 8 MASTERS Keagan | 26.588 |
| 5 | 35 DELLI GUANTI Pietro | 26.598 |
| 6 | 34 SCHOUTEN Dirk | 26.636 |
| 7 | 12 MARTINEZ Luciano | 26.670 |
| 8 | 28 AMATI Giorgio | 26.671 |
| 9 | 21 BERTONELLI Diego | 26.687 |
| 10 | 38 IAQUINTA Simone | 26.723 |
| 11 | 15 FESTANTE Aldo | 26.744 |
| 12 | 24 FANT Filippo | 26.751 |
| 13 | 46 PUJATTI Nicholas | 26.767 |
| 14 | 19 HOFFNER Hjelte | 26.772 |
| 15 | 14 ZENDELI Lirim | 26.787 |
| 16 | 5 KLEIN Marvin | 26.800 |
| 17 | 30 SCHAAP Nathan | 26.859 |
| 18 | 51 GNEMMI Paolo | 26.860 |
| 19 | 18 MEZZETTI William | 26.864 |
| 20 | 32 QUARESMINI Gianmarco | 26.882 |
| 21 | 52 DE AMICIS Alberto | 26.890 |
| 22 | 9 SEYFFERT Jan | 26.892 |
| 23 | 26 MARCHIANTE Mattia | 26.894 |
| 24 | 27 GUIRRERI Giuseppe | 26.908 |
| 25 | 23 SEGRE Matteo | 26.968 |
| 26 | 33 TITARENKO Sergey | 27.037 |
| 27 | 54 STEFANELLI Stefano | 27.060 |
| 28 | 67 DE GIACOMI Alex | 27.143 |
| 29 | 88 GIRONDI Andrea | 27.203 |
| 30 | 25 CHELI Lorenzo | 27.336 |
| 31 | 20 YILDIRIM Bati | 27.364 |
| 32 | 50 FENICI Francesco Maria | 27.368 |
| 33 | 80 MOWLE Lee | 27.641 |

SEG. 2

| | | |
|----|----------------------------------|--------|
| 1 | 8 MASTERS Keagan | 22.271 |
| 2 | 38 IAQUINTA Simone | 22.284 |
| 3 | 11 BRASCHI Francesco | 22.308 |
| 4 | 28 AMATI Giorgio | 22.360 |
| 5 | 13 TAUSCHER Alexander | 22.368 |
| 6 | 21 BERTONELLI Diego | 22.394 |
| 7 | 14 ZENDELI Lirim | 22.424 |
| 8 | 35 DELLI GUANTI Pietro | 22.454 |
| 9 | 18 MEZZETTI William | 22.475 |
| 10 | 30 SCHAAP Nathan | 22.477 |
| 11 | 5 KLEIN Marvin | 22.487 |
| 12 | 9 SEYFFERT Jan | 22.498 |
| 13 | 34 SCHOUTEN Dirk | 22.509 |
| 14 | 3 CERQUI Alberto | 22.515 |
| 15 | 15 FESTANTE Aldo | 22.561 |
| 16 | 46 PUJATTI Nicholas | 22.589 |
| 17 | 26 MARCHIANTE Mattia | 22.606 |
| 18 | 32 QUARESMINI Gianmarco | 22.646 |
| 19 | 23 SEGRE Matteo | 22.668 |
| 20 | 12 MARTINEZ Luciano | 22.670 |
| 21 | 33 TITARENKO Sergey | 22.675 |
| 22 | 52 DE AMICIS Alberto | 22.675 |
| 23 | 51 GNEMMI Paolo | 22.688 |
| 24 | 27 GUIRRERI Giuseppe | 22.716 |
| 25 | 67 DE GIACOMI Alex | 22.718 |
| 26 | 54 STEFANELLI Stefano | 22.765 |
| 27 | 19 HOFFNER Hjelte | 22.778 |
| 28 | 24 FANT Filippo | 22.786 |
| 29 | 50 FENICI Francesco Maria | 23.017 |
| 30 | 88 GIRONDI Andrea | 23.055 |
| 31 | 20 YILDIRIM Bati | 23.258 |
| 32 | 25 CHELI Lorenzo | 23.455 |
| 33 | 80 MOWLE Lee | 23.494 |

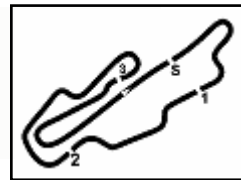
SEG. 3

| | | |
|----|----------------------------------|--------|
| 1 | 38 IAQUINTA Simone | 34.788 |
| 2 | 28 AMATI Giorgio | 34.828 |
| 3 | 8 MASTERS Keagan | 34.832 |
| 4 | 14 ZENDELI Lirim | 34.928 |
| 5 | 3 CERQUI Alberto | 34.968 |
| 6 | 11 BRASCHI Francesco | 34.976 |
| 7 | 21 BERTONELLI Diego | 35.051 |
| 8 | 32 QUARESMINI Gianmarco | 35.116 |
| 9 | 34 SCHOUTEN Dirk | 35.128 |
| 10 | 15 FESTANTE Aldo | 35.144 |
| 11 | 13 TAUSCHER Alexander | 35.171 |
| 12 | 19 HOFFNER Hjelte | 35.230 |
| 13 | 24 FANT Filippo | 35.231 |
| 14 | 35 DELLI GUANTI Pietro | 35.281 |
| 15 | 12 MARTINEZ Luciano | 35.288 |
| 16 | 5 KLEIN Marvin | 35.293 |
| 17 | 54 STEFANELLI Stefano | 35.314 |
| 18 | 46 PUJATTI Nicholas | 35.318 |
| 19 | 33 TITARENKO Sergey | 35.375 |
| 20 | 51 GNEMMI Paolo | 35.400 |
| 21 | 52 DE AMICIS Alberto | 35.411 |
| 22 | 23 SEGRE Matteo | 35.561 |
| 23 | 9 SEYFFERT Jan | 35.565 |
| 24 | 26 MARCHIANTE Mattia | 35.570 |
| 25 | 30 SCHAAP Nathan | 35.570 |
| 26 | 27 GUIRRERI Giuseppe | 35.636 |
| 27 | 88 GIRONDI Andrea | 35.665 |
| 28 | 18 MEZZETTI William | 35.682 |
| 29 | 67 DE GIACOMI Alex | 35.708 |
| 30 | 50 FENICI Francesco Maria | 36.116 |
| 31 | 20 YILDIRIM Bati | 36.184 |
| 32 | 25 CHELI Lorenzo | 36.191 |
| 33 | 80 MOWLE Lee | 36.523 |

SEG. 4

| | | |
|----|----------------------------------|--------|
| 1 | 8 MASTERS Keagan | 26.411 |
| 2 | 38 IAQUINTA Simone | 26.417 |
| 3 | 3 CERQUI Alberto | 26.468 |
| 4 | 21 BERTONELLI Diego | 26.491 |
| 5 | 35 DELLI GUANTI Pietro | 26.507 |
| 6 | 34 SCHOUTEN Dirk | 26.548 |
| 7 | 13 TAUSCHER Alexander | 26.556 |
| 8 | 14 ZENDELI Lirim | 26.568 |
| 9 | 24 FANT Filippo | 26.587 |
| 10 | 46 PUJATTI Nicholas | 26.605 |
| 11 | 32 QUARESMINI Gianmarco | 26.606 |
| 12 | 28 AMATI Giorgio | 26.625 |
| 13 | 11 BRASCHI Francesco | 26.637 |
| 14 | 26 MARCHIANTE Mattia | 26.654 |
| 15 | 15 FESTANTE Aldo | 26.658 |
| 16 | 30 SCHAAP Nathan | 26.673 |
| 17 | 51 GNEMMI Paolo | 26.689 |
| 18 | 5 KLEIN Marvin | 26.690 |
| 19 | 19 HOFFNER Hjelte | 26.692 |
| 20 | 52 DE AMICIS Alberto | 26.702 |
| 21 | 54 STEFANELLI Stefano | 26.703 |
| 22 | 9 SEYFFERT Jan | 26.703 |
| 23 | 12 MARTINEZ Luciano | 26.734 |
| 24 | 88 GIRONDI Andrea | 26.755 |
| 25 | 20 YILDIRIM Bati | 26.795 |
| 26 | 18 MEZZETTI William | 26.802 |
| 27 | 33 TITARENKO Sergey | 26.838 |
| 28 | 23 SEGRE Matteo | 26.842 |
| 29 | 27 GUIRRERI Giuseppe | 26.852 |
| 30 | 67 DE GIACOMI Alex | 26.937 |
| 31 | 25 CHELI Lorenzo | 26.979 |
| 32 | 50 FENICI Francesco Maria | 26.986 |
| 33 | 80 MOWLE Lee | 27.006 |



PORSCHE**CARRERA CUP
ITALIA****ACI Racing Weekend Mugello, 12-13 Luglio 2025****Porsche Carrera Cup Italia - Ideal Time Prove Libere**

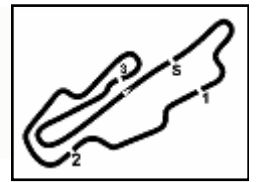
Aut.Int. Mugello 5.245 m

| Num. | Conditore | Auto | Seg. 1 | Seg. 2 | Seg. 3 | Seg. 4 | Ideal Time | | |
|----------------------------|---------------------------------|-------------------------|------------------|------------------|------------------|-------------------------|-----------------------------|------|-------|
| | | | Diff. 1 | Diff. 2 | Diff. 3 | Diff. 4 | Miglior Giro | Pos. | Diff. |
| 1 | 8 MASTERS K. (ZAF) | Porsche 911 GT3 CUP 992 | 26.588 | 22.271 | 34.832 +0.172 | 26.411 +0.074 | 1'50.102 1'50.348 | 2 | 0.246 |
| 2 | 38 IAQUINTA S. (ITA) | Porsche 911 GT3 CUP 992 | 26.723 +0.035 | 22.284 | 34.788 | 26.417 | 1'50.212 1'50.247 | 1 | 0.035 |
| 3 | 11 BRASCHI F. (ITA) | Porsche 911 GT3 CUP 992 | 26.524 | 22.308 | 34.976 | 26.637 | 1'50.445 1'50.445 | 3 | |
| 4 | 28 AMATI G. (ITA) | Porsche 911 GT3 CUP 992 | 26.671 +0.112 | 22.360 | 34.828 +0.109 | 26.625 +0.002 | 1'50.484 1'50.707 | 5 | 0.223 |
| 5 | 3 CERQUI A. (ITA) | Porsche 911 GT3 CUP 992 | 26.583 | 22.515 +0.100 | 34.968 | 26.468 +0.011 | 1'50.534 1'50.645 | 4 | 0.111 |
| 6 | 21 BERTONELLI D. (ITA) | Porsche 911 GT3 CUP 992 | 26.687 +0.139 | 22.394 | 35.051 +0.131 | 26.491 | 1'50.623 1'50.893 | 8 | 0.270 |
| 7 | 13 TAUSCHER A. (DEU) | Porsche 911 GT3 CUP 992 | 26.529 | 22.368 | 35.171 +0.145 | 26.556 +0.026 | 1'50.624 1'50.795 | 6 | 0.171 |
| 8 | 14 ZENDELI L. (DEU) | Porsche 911 GT3 CUP 992 | 26.787 +0.228 | 22.424 +0.046 | 34.928 | 26.568 +0.014 | 1'50.707 1'50.995 | 9 | 0.288 |
| 9 | 34 SCHOUTEN D. (NLD) | Porsche 911 GT3 CUP 992 | 26.636 +0.033 | 22.509 | 35.128 +0.052 | 26.548 +0.128 | 1'50.821 1'51.034 | 10 | 0.213 |
| 10 | 35 DELLI GUANTI P. (ITA) | Porsche 911 GT3 CUP 992 | 26.598 | 22.454 | 35.281 +0.024 | 26.507 | 1'50.840 1'50.864 | 7 | 0.024 |
| 11 | 15 FESTANTE A. (ITA) | Porsche 911 GT3 CUP 992 | 26.744 +0.183 | 22.561 +0.119 | 35.144 | 26.658 | 1'51.107 1'51.409 | 12 | 0.302 |
| 12 | 32 QUARESMINI G. (ITA) | Porsche 911 GT3 CUP 992 | 26.882 +0.089 | 22.646 | 35.116 | 26.606 +0.010 | 1'51.250 1'51.349 | 11 | 0.099 |
| 13 | 5 KLEIN M. (FRA) | Porsche 911 GT3 CUP 992 | 26.800 +0.111 | 22.487 +0.112 | 35.293 +0.057 | 26.690 | 1'51.270 1'51.550 | 14 | 0.280 |
| 14 | 46 PUJATTI N. (ITA) | Porsche 911 GT3 CUP 992 | 26.767 | 22.589 | 35.318 | 26.605 +0.140 | 1'51.279 1'51.419 | 13 | 0.140 |
| 15 | 24 FANT F. (ITA) | Porsche 911 GT3 CUP 992 | 26.751 +0.183 | 22.786 +0.074 | 35.231 | 26.587 | 1'51.355 1'51.612 | 15 | 0.257 |
| 16 | 12 MARTINEZ L. (ARG) | Porsche 911 GT3 CUP 992 | 26.670 +0.349 | 22.670 +0.214 | 35.288 | 26.734 +0.007 | 1'51.362 1'51.932 | 21 | 0.570 |
| 17 | 19 HOFFNER H. (DNK) | Porsche 911 GT3 CUP 992 | 26.772 +0.059 | 22.778 +0.076 | 35.230 | 26.692 +0.093 | 1'51.472 1'51.700 | 17 | 0.228 |
| 18 | 30 SCHAAP N. (NLD) | Porsche 911 GT3 CUP 992 | 26.859 | 22.477 | 35.570 +0.025 | 26.673 +0.183 | 1'51.579 1'51.787 | 18 | 0.208 |
| 19 | 51 GNEMMI P. (ITA) | Porsche 911 GT3 CUP 992 | 26.860 | 22.688 | 35.400 | 26.689 | 1'51.637 1'51.637 | 16 | |
| 20 | 9 SEYFFERT J. (DEU) | Porsche 911 GT3 CUP 992 | 26.892 +0.053 | 22.498 +0.104 | 35.565 | 26.703 +0.077 | 1'51.658 1'51.892 | 19 | 0.234 |
| 21 | 52 DE AMICIS A. (ITA) | Porsche 911 GT3 CUP 992 | 26.890 | 22.675 +0.015 | 35.411 +0.172 | 26.702 +0.052 | 1'51.678 1'51.917 | 20 | 0.239 |
| 22 | 26 MARCHIANTE M. (ITA) | Porsche 911 GT3 CUP 992 | 26.894 | 22.606 +0.131 | 35.570 +0.061 | 26.654 +0.072 | 1'51.724 1'51.988 | 22 | 0.264 |
| 23 | 18 MEZZETTI W. (ITA) | Porsche 911 GT3 CUP 992 | 26.864 +0.117 | 22.475 +0.184 | 35.682 | 26.802 +0.065 | 1'51.823 1'52.189 | 24 | 0.366 |
| 24 | 54 STEFANELLI S. (ITA) | Porsche 911 GT3 CUP 992 | 27.060 +0.066 | 22.765 +0.025 | 35.314 +0.206 | 26.703 | 1'51.842 1'52.139 | 23 | 0.297 |
| 25 | 33 TITARENKO S. | Porsche 911 GT3 CUP 992 | 27.037 +0.072 | 22.675 | 35.375 +0.253 | 26.838 | 1'51.925 1'52.250 | 25 | 0.325 |
| 26 | 23 SEGRE M. (ITA) | Porsche 911 GT3 CUP 992 | 26.968 +0.024 | 22.668 +0.099 | 35.561 +0.153 | 26.842 | 1'52.039 1'52.315 | 26 | 0.276 |
| 27 | 27 GUIRRERI G. (ITA) | Porsche 911 GT3 CUP 992 | 26.908 +0.021 | 22.716 +0.144 | 35.636 +0.038 | 26.852 | 1'52.112 1'52.315 | 27 | 0.203 |
| 28 | 67 DE GIACOMI A. (ITA) | Porsche 911 GT3 CUP 992 | 27.143 +0.089 | 22.718 +0.104 | 35.708 | 26.937 +0.074 | 1'52.506 1'52.773 | 28 | 0.267 |
| 29 | 88 GIRONDI A. (ITA) | Porsche 911 GT3 CUP 992 | 27.203 +0.070 | 23.055 | 35.665 | 26.755 +0.071 | 1'52.678 1'52.819 | 29 | 0.141 |
| 30 | 50 FENICI F. (ITA) | Porsche 911 GT3 CUP 992 | 27.368 | 23.017 +0.193 | 36.116 | 26.986 | 1'53.487 1'53.680 | 30 | 0.193 |
| 31 | 20 YILDIRIM B. (TUR) | Porsche 911 GT3 CUP 992 | 27.364 | 23.258 +0.214 | 36.184 | 26.795 +0.111 | 1'53.601 1'53.926 | 31 | 0.325 |
| 32 | 25 CHELI L. (SMR) | Porsche 911 GT3 CUP 992 | 27.336 | 23.455 +0.085 | 36.191 | 26.979 | 1'53.961 1'54.046 | 32 | 0.085 |
| 33 | 80 MOWLE L. (GBR) | Porsche 911 GT3 CUP 992 | 27.641 +0.010 | 23.494 | 36.523 | 27.006 +0.033 | 1'54.664 1'54.707 | 33 | 0.043 |
| Ideal Time Assoluto | | | 26.524 | 22.271 | 34.788 | 26.411 | 1'49.994 | | |

11/07/2025

Powered by **FIGR PERUGIA TIMING**

ACI Racing Weekend Mugello, 12-13 Luglio 2025
Porsche Carrera Cup Italia - Analisi Tempi Prove Libere



Aut.Int. Mugello 5.245 m

3 A. CERQUI (1'50.645)

| Giro | Seg.1 | Seg.2 | Seg.3 | Seg.4 | T. Giro | km/h | Local Time |
|------|---------------|---------------|---------------|---------------|-----------------|--------------|--------------|
| | | | | | | | 15:37'30.903 |
| 1 | 45.590 | 30.606 | 45.456 | 30.133 | 2'31.785P | 115,9 | 15:40'02.688 |
| 2 | 30.687 | 23.855 | 37.125 | 27.662 | 1'59.329 | 191,8 | 15:42'02.017 |
| 3 | 27.124 | 23.026 | 36.104 | 26.788 | 1'53.042C | 260,2 | 15:43'55.059 |
| 4 | 27.602 | 22.919 | 36.223 | 26.871 | 1'53.615 | 260,2 | 15:45'48.674 |
| 5 | 27.381 | | | | 5'04.302P | 260,2 | 15:50'52.976 |
| 6 | 35.077 | 23.410 | 39.187 | 28.819 | 2'06.493P | 167,2 | 15:52'59.469 |
| 7 | 27.164 | 23.076 | 35.687 | 26.830 | 1'52.757 | 262,1 | 15:54'52.226 |
| 8 | 27.538 | 23.102 | 35.720 | 26.738 | 1'53.098 | 261,5 | 15:56'45.324 |
| 9 | 27.478 | 24.405 | 37.117 | 27.730 | 1'56.730 | 260,2 | 15:58'42.050 |
| 10 | 27.354 | 23.058 | 35.923 | 26.762 | 1'53.097 | 260,2 | 16:00'35.151 |
| 11 | 27.755 | | | | 11'54.200P | 261,5 | 16:12'29.351 |
| 12 | 44.672 | 30.714 | 42.510 | 28.693 | 2'26.589P | 100,0 | 16:14'55.940 |
| 13 | 32.390 | 25.292 | 46.729 | 27.956 | 2'12.367 | 255,9 | 16:17'08.307 |
| 14 | 26.754 | 22.638 | 35.156 | 26.468 | 1'51.016 | 257,8 | 16:18'59.323 |
| 15 | 26.583 | 22.615 | 34.968 | 26.479 | 1'50.645 | 260,2 | 16:20'49.968 |
| 16 | 26.760 | 22.515 | 35.100 | 26.472 | 1'50.847 | 259,0 | 16:22'40.815 |

| | | | | | | | |
|----|--------|--------|--------|----------|-----------|-------|--------------|
| 18 | 26.651 | 22.445 | 35.129 | 3'10.821 | 4'35.046P | 259,6 | 16:26'40.297 |
| 19 | 34.495 | 22.686 | 35.305 | 26.611 | 1'59.097P | 172,2 | 16:28'39.394 |
| 20 | 26.686 | 22.485 | 35.362 | 26.506 | 1'51.039 | 260,2 | 16:30'30.433 |

9 J. SEYFFERT (1'51.892)

| Giro | Seg.1 | Seg.2 | Seg.3 | Seg.4 | T. Giro | km/h | Local Time |
|------|---------------|---------------|---------------|---------------|-----------------|--------------|--------------|
| | | | | | | | 15:31'47.266 |
| 1 | 41.943 | 27.746 | 40.277 | 30.731 | 2'20.697P | 124,6 | 15:34'07.963 |
| 2 | 30.460 | 25.405 | 37.799 | 29.133 | 2'02.797 | 214,3 | 15:36'10.760 |
| 3 | 28.515 | 24.411 | 36.799 | 28.035 | 1'57.760 | 237,9 | 15:38'08.520 |
| 4 | 27.289 | 23.453 | 36.507 | 27.402 | 1'54.651 | 256,5 | 15:40'03.171 |
| 5 | 27.682 | 28.774 | 40.447 | 28.542 | 2'05.445 | 257,8 | 15:42'08.616 |
| 6 | 27.218 | 23.070 | 36.189 | 27.334 | 1'53.811 | 257,8 | 15:44'02.427 |
| 7 | 27.359 | 22.963 | 35.839 | 27.779 | 1'53.940C | 258,4 | 15:45'56.367 |
| 8 | 27.423 | 22.976 | 36.005 | 27.457 | 1'53.861 | 256,5 | 15:47'50.228 |
| 9 | 27.683 | | | | 3'16.856P | 257,8 | 15:51'07.084 |
| 10 | 35.110 | 25.842 | 38.186 | 27.185 | 2'06.323P | 163,1 | 15:53'13.407 |
| 11 | 27.114 | 23.201 | 36.000 | 27.786 | 1'54.101C | 260,2 | 15:55'07.508 |
| 12 | 27.258 | 23.011 | 36.104 | 27.110 | 1'53.483C | 260,2 | 15:57'00.991 |
| 13 | 27.252 | 22.869 | 36.078 | 27.663 | 1'53.862 | 259,6 | 15:58'54.853 |
| 14 | 27.274 | 23.139 | 36.083 | 27.152 | 1'53.648 | 259,0 | 16:00'48.501 |
| 15 | 27.354 | | | | 7'23.524P | 260,9 | 16:08'12.025 |
| 16 | 36.540 | 24.180 | 36.935 | 27.698 | 2'05.353P | 161,0 | 16:10'17.378 |
| 17 | 27.346 | 23.068 | 36.076 | 27.210 | 1'53.700 | 259,0 | 16:12'11.078 |
| 18 | 27.616 | 23.159 | 36.180 | 27.139 | 1'54.094 | 259,6 | 16:14'05.172 |
| 19 | 27.383 | 23.222 | 36.214 | 27.054 | 1'53.873 | 259,0 | 16:15'59.045 |
| 20 | 27.836 | | | | 3'57.783P | 257,8 | 16:19'56.828 |
| 21 | 38.377 | 25.273 | 37.699 | 28.411 | 2'09.760P | 148,6 | 16:22'06.588 |
| 22 | 28.458 | 23.873 | 36.188 | 26.878 | 1'55.397 | 242,7 | 16:24'01.985 |
| 23 | 27.114 | 22.748 | 35.583 | 26.737 | 1'52.182 | 259,0 | 16:25'54.167 |
| 24 | 26.945 | 22.602 | 35.565 | 26.780 | 1'51.892 | 260,2 | 16:27'46.059 |
| 25 | 26.892 | 22.498 | 35.822 | 26.966 | 1'52.178 | 260,2 | 16:29'38.237 |
| 26 | 26.930 | 22.674 | 35.936 | 26.703 | 1'52.243 | 260,9 | 16:31'30.480 |

11 F. BRASCHI (1'50.445)

| Giro | Seg.1 | Seg.2 | Seg.3 | Seg.4 | T. Giro | km/h | Local Time |
|------|---------------|---------------|---------------|---------------|-----------------|--------------|--------------|
| | | | | | | | 15:37'26.489 |
| 1 | 27.873 | 23.845 | | | 2'49.378 | 258,4 | 15:40'15.867 |
| 2 | 28.681 | 23.288 | 36.401 | 28.062 | 1'56.432 | 259,6 | 15:42'12.299 |
| 3 | 27.118 | 22.871 | 35.883 | 27.028 | 1'52.900 | 259,6 | 15:44'05.199 |
| 4 | 26.983 | 22.862 | 36.023 | 5'05.721 | 6'31.589P | 259,0 | 15:50'36.788 |
| 5 | 35.597 | 23.845 | 36.094 | 27.674 | 2'03.210P | 159,3 | 15:52'39.998 |
| 6 | 27.114 | 23.048 | 35.973 | 27.072 | 1'53.207 | 261,5 | 15:54'33.205 |
| 7 | 27.206 | 23.461 | 35.937 | 26.952 | 1'53.556 | 261,5 | 15:56'26.761 |
| 8 | 27.364 | 23.362 | 36.046 | 26.994 | 1'53.766 | 261,5 | 15:58'20.527 |
| 9 | 27.191 | 23.032 | 36.084 | 6'23.510 | 7'49.817P | 259,0 | 16:06'10.344 |
| 10 | 43.475 | | | | 1'37.407P | 133,7 | 16:07'47.751 |
| 11 | 38.035 | 25.624 | 38.895 | 27.657 | 2'10.211P | 160,5 | 16:09'57.962 |
| 12 | 27.610 | 23.108 | 35.033 | 26.758 | 1'52.509 | 251,2 | 16:11'50.471 |
| 13 | 26.524 | 22.308 | 34.976 | 26.637 | 1'50.445 | 259,6 | 16:13'40.916 |
| 14 | 26.567 | 22.461 | 37.926 | 27.672 | 1'54.626 | 259,0 | 16:15'35.542 |
| 15 | 26.801 | | | | 4'02.779P | 259,0 | 16:19'38.321 |
| 16 | 38.494 | 23.110 | 35.342 | 26.861 | 2'03.807P | 133,3 | 16:21'42.128 |
| 17 | 26.823 | 22.629 | 35.400 | 26.639 | 1'51.491 | 257,8 | 16:23'33.619 |
| 18 | 26.849 | 22.860 | 35.555 | 26.798 | 1'52.062 | 257,8 | 16:25'25.681 |
| 19 | 27.174 | 24.382 | 37.419 | 27.112 | 1'56.087 | 261,5 | 16:27'21.768 |
| 20 | 26.846 | 22.765 | 35.673 | 26.797 | 1'52.081 | 260,2 | 16:29'13.849 |
| 21 | 26.782 | 22.868 | 35.865 | 26.708 | 1'52.223 | 261,5 | 16:31'06.072 |

12 L. MARTINEZ (1'51.932)

| Giro | Seg.1 | Seg.2 | Seg.3 | Seg.4 | T. Giro | km/h | Local Time |
|------|--------|--------|--------|--------|-----------|--------------|--------------|
| | | | | | | | 15:39'22.195 |
| 1 | 27.989 | 23.612 | 36.379 | 27.195 | 1'55.175C | | 15:41'17.370 |
| 2 | 27.500 | 23.784 | 36.903 | 27.122 | 1'55.309 | 261,5 | 15:43'12.679 |
| 3 | 27.202 | 23.301 | 36.443 | 27.101 | 1'54.047 | 257,8 | 15:45'06.726 |
| 4 | 27.600 | | | | 4'22.066P | 257,8 | 15:49'28.792 |
| 5 | 35.938 | 23.784 | 36.634 | 27.622 | 2'03.978P | 167,2 | 15:51'32.770 |

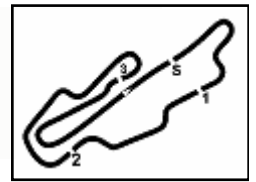
5 M. KLEIN (1'51.550)

| Giro | Seg.1 | Seg.2 | Seg.3 | Seg.4 | T. Giro | km/h | Local Time |
|------|---------------|---------------|---------------|---------------|-----------------|--------------|--------------|
| | | | | | | | 15:30'17.095 |
| 1 | 39.705 | 26.168 | 38.716 | 28.589 | 2'13.178P | 147,3 | 15:32'30.273 |
| 2 | 28.311 | 23.905 | 36.627 | 27.244 | 1'56.087 | 251,2 | 15:34'26.360 |
| 3 | 27.514 | 23.399 | 35.913 | 27.093 | 1'53.919C | 257,1 | 15:36'20.279 |
| 4 | 27.172 | 23.174 | 35.993 | 26.963 | 1'53.302 | 258,4 | 15:38'13.581 |
| 5 | 27.044 | 23.008 | 36.258 | 26.975 | 1'53.285 | 258,4 | 15:40'06.866 |
| 6 | 27.237 | | | | 4'08.301P | 259,0 | 15:44'15.167 |
| 7 | 34.758 | 23.119 | 35.852 | 30.066 | 2'03.795P | 167,7 | 15:46'18.962 |
| 8 | 27.061 | 22.741 | 35.964 | 27.246 | 1'53.012 | 254,7 | 15:48'11.974 |
| 9 | 27.335 | 22.917 | 36.220 | 29.283 | 1'55.755 | 253,5 | 15:50'07.729 |
| 10 | 27.292 | | | | 4'18.944P | 257,1 | 15:54'26.673 |
| 11 | 44.693 | 23.131 | 36.394 | 27.002 | 2'11.220P | 172,8 | 15:56'37.893 |
| 12 | 27.202 | 22.955 | 35.858 | 26.973 | 1'52.988 | 256,5 | 15:58'30.881 |
| 13 | 27.112 | 22.920 | 35.800 | 26.909 | 1'52.741 | 258,4 | 16:00'23.622 |
| 14 | 27.123 | 23.038 | 1'02.575 | 6'50.092 | 8'42.828P | 260,2 | 16:09'06.450 |
| 15 | 39.168 | 25.865 | 37.995 | 27.616 | 2'10.644P | 150,0 | 16:11'17.094 |
| 16 | 28.444 | 24.012 | 39.240 | 27.159 | 1'58.855 | 255,9 | 16:13'15.949 |
| 17 | 26.911 | 22.599 | 35.350 | 26.690 | 1'51.550 | 259,0 | 16:15'07.499 |
| 18 | 26.916 | 22.512 | 36.462 | 27.034 | 1'52.924 | 259,0 | 16:17'00.423 |
| 19 | 26.932 | 22.517 | 38.664 | 26.797 | 1'54.910 | 257,1 | 16:18'55.333 |
| 20 | 26.800 | 22.487 | 35.293 | 3'22.301 | 4'46.881P | 259,0 | 16:23'42.214 |
| 21 | 42.156 | 22.507 | 35.406 | 26.809 | 2'06.878P | 172,8 | 16:25'49.092 |
| 22 | 26.946 | 22.661 | 35.434 | 28.774 | 1'53.815 | 257,8 | 16:27'42.907 |
| 23 | 27.093 | 22.860 | 35.631 | 26.879 | 1'52.463 | 260,2 | 16:29'35.370 |

8 K. MASTERS (1'50.348)

| Giro | Seg.1 | Seg.2 | Seg.3 | Seg.4 | T. Giro | km/h | Local Time |
|------|--------|--------|--------|--------|-----------|-------|--------------|
| | | | | | | | 15:33'53.178 |
| 1 | 40.268 | 26.081 | 40.038 | 29.709 | 2'16.096P | 146,5 | 15:36'09.274 |
| 2 | 29.300 | 27.112 | 37.782 | 27.354 | 2'01.548 | 233,8 | 15:38'10.822 |
| 3 | 27.220 | 23.063 | 35.912 | 26.766 | 1'52.961 | 258,4 | 15:40'03.783 |
| 4 | 27.202 | 22.856 | 35.726 | 26.807 | 1'52.591 | 261,5 | 15:41'56.374 |
| 5 | 27.043 | 23.006 | 37.214 | 27.002 | 1'54.265 | 260,9 | 15:43'50.639 |
| 6 | 26.825 | 22.809 | 35.642 | 26.818 | 1'52.094 | 259,0 | 15:45'42.733 |
| 7 | 27.559 | | | | 4'52.664P | 259,0 | 15:50'35.3 |

ACI Racing Weekend Mugello, 12-13 Luglio 2025
Porsche Carrera Cup Italia - Analisi Tempi Prove Libere



Aut.Int. Mugello 5.245 m

| | | | | | | | |
|----|---------------|---------------|---------------|---------------|-----------------|--------------|--------------|
| 6 | 27.604 | 23.948 | 36.427 | 27.019 | 1'54.998 | 257,8 | 15:53'27.768 |
| 7 | 27.357 | 23.828 | 37.710 | 27.205 | 1'56.100 | 261,5 | 15:55'23.868 |
| 8 | 27.299 | 23.369 | 36.800 | 26.956 | 1'54.424C | 260,2 | 15:57'18.292 |
| 9 | 27.551 | 23.371 | 36.459 | 27.521 | 1'54.902C | 259,6 | 15:59'13.194 |
| 10 | 27.611 | | | | 7'23.407P | 259,0 | 16:06'36.601 |
| 11 | 41.665 | 26.850 | 41.481 | 31.184 | 2'21.180P | 128,4 | 16:08'57.781 |
| 12 | 30.505 | 23.569 | 35.911 | 32.030 | 2'02.015 | 200,0 | 16:10'59.796 |
| 13 | 27.019 | 22.884 | 35.288 | 26.741 | 1'51.932 | 258,4 | 16:12'51.728 |
| 14 | 26.670 | 22.919 | 38.125 | 26.876 | 1'54.590 | 260,2 | 16:14'46.318 |
| 15 | 26.834 | 22.809 | 36.394 | 29.770 | 1'55.807 | 257,8 | 16:16'42.125 |
| 16 | 27.017 | 22.813 | 35.674 | 26.779 | 1'52.283 | 257,1 | 16:18'34.408 |
| 17 | 27.011 | | | | 5'33.499P | 257,8 | 16:24'07.907 |
| 18 | 34.885 | 23.443 | 36.271 | 27.680 | 2'02.279P | 169,8 | 16:26'10.186 |
| 19 | 27.180 | 23.055 | 35.831 | 26.739 | 1'52.805 | 257,8 | 16:28'02.991 |
| 20 | 27.030 | 23.294 | 35.733 | 26.734 | 1'52.791 | 259,6 | 16:29'55.782 |
| 21 | 27.158 | 22.670 | 35.940 | 26.813 | 1'52.581 | 259,0 | 16:31'48.363 |

| 15 A. FESTANTE (1'51.409) | | | | | | | |
|---------------------------|---------------|---------------|---------------|---------------|-----------------|--------------|--------------|
| Giro | Seg.1 | Seg.2 | Seg.3 | Seg.4 | T. Giro | km/h | Local Time |
| 1 | 38.363 | 25.674 | 39.095 | 28.463 | 2'11.595P | 164,9 | 15:33'29.780 |
| 2 | 28.912 | | | | 3'17.951P | 226,4 | 15:36'47.731 |
| 3 | 36.067 | 23.754 | 36.246 | 27.010 | 2'03.077P | 162,9 | 15:38'50.808 |
| 4 | 26.927 | 22.680 | 35.144 | 26.658 | 1'51.409 | | 15:40'42.217 |
| 5 | 27.003 | 22.786 | 35.481 | 26.900 | 1'52.170 | 264,1 | 15:42'34.387 |
| 6 | 28.943 | 26.542 | 39.672 | 31.463 | 2'06.620 | | 15:44'41.007 |
| 7 | 27.103 | 22.561 | 35.460 | 3'42.053 | 5'07.177P | 259,6 | 15:49'48.184 |
| 8 | 48.703 | 24.932 | 36.441 | 27.238 | 2'17.314P | 100,1 | 15:52'05.498 |
| 9 | 27.182 | 23.192 | 35.818 | 26.777 | 1'52.969 | | 15:53'58.467 |
| 10 | 26.903 | 23.140 | 35.945 | 3'58.950 | 5'24.938P | 264,1 | 15:59'23.405 |
| 11 | 36.292 | 24.067 | 36.115 | 5'05.850 | 6'42.324P | 173,6 | 16:06'05.729 |
| 12 | 35.105 | 23.952 | 36.508 | 26.864 | 2'02.429P | 172,2 | 16:08'08.158 |
| 13 | 27.083 | 23.362 | 36.350 | 26.919 | 1'53.714C | 261,5 | 16:10'01.872 |
| 14 | 27.238 | 22.972 | 35.879 | 27.158 | 1'53.247 | 264,1 | 16:11'55.119 |
| 15 | 28.291 | | | | 5'11.554P | | 16:17'06.673 |
| 16 | 39.038 | 27.882 | 39.161 | 29.762 | 2'15.843P | 134,8 | 16:19'22.516 |
| 17 | 28.180 | 23.943 | 37.064 | 28.632 | 1'57.819 | 257,8 | 16:21'20.335 |
| 18 | 26.898 | 22.614 | 35.176 | 26.722 | 1'51.410 | 258,4 | 16:23'11.745 |
| 19 | 26.899 | 22.631 | 35.320 | 1'53.343 | 3'18.193P | 260,2 | 16:26'29.938 |
| 20 | 36.176 | 23.161 | 35.413 | 26.868 | 2'01.618P | 173,9 | 16:28'31.556 |
| 21 | 26.744 | 22.769 | 35.236 | 26.719 | 1'51.468 | 260,2 | 16:30'23.024 |

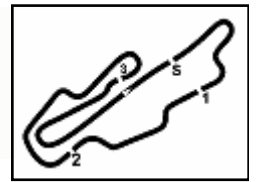
| 13 A. TAUSCHER (1'50.795) | | | | | | | |
|---------------------------|---------------|---------------|---------------|---------------|-----------------|--------------|--------------|
| Giro | Seg.1 | Seg.2 | Seg.3 | Seg.4 | T. Giro | km/h | Local Time |
| 1 | 43.814 | 28.188 | 41.233 | 50.615 | 2'43.850P | 145,4 | 15:34'24.006 |
| 2 | 57.710 | 24.281 | 36.914 | 27.131 | 2'26.036P | 172,2 | 15:36'50.042 |
| 3 | 27.443 | 22.983 | 35.570 | 29.588 | 1'55.584 | 255,3 | 15:38'45.626 |
| 4 | 27.047 | 22.731 | 35.602 | 26.726 | 1'52.106 | 260,2 | 15:40'37.732 |
| 5 | 27.070 | 22.780 | 35.744 | 26.960 | 1'52.554 | 260,2 | 15:42'30.286 |
| 6 | 27.349 | | | | 4'33.550P | 262,8 | 15:47'03.836 |
| 7 | 34.585 | 22.775 | 35.672 | 26.905 | 1'59.937P | 170,9 | 15:49'03.773 |
| 8 | 27.038 | 22.735 | 36.193 | 26.785 | 1'52.751 | 257,8 | 15:50'56.524 |
| 9 | 27.075 | 22.610 | 35.593 | 26.650 | 1'51.928 | 260,2 | 15:52'48.452 |
| 10 | 27.198 | 23.042 | 35.727 | 27.053 | 1'53.020 | 264,1 | 15:54'41.472 |
| 11 | 27.013 | 22.902 | 35.903 | 4'59.994 | 6'25.812P | 264,1 | 16:01'07.284 |
| 12 | 48.059 | | | | 4'56.152P | 156,5 | 16:06'03.436 |
| 13 | 35.426 | 23.960 | 36.805 | 27.014 | 2'03.205P | 172,2 | 16:08'06.641 |
| 14 | 27.331 | 23.510 | 36.123 | 26.909 | 1'53.873 | 260,9 | 16:10'00.514 |
| 15 | 27.051 | 22.706 | 35.739 | 26.851 | 1'52.347 | 262,8 | 16:11'52.861 |
| 16 | 26.897 | 22.758 | 36.036 | 26.793 | 1'52.484 | 262,8 | 16:13'45.345 |
| 17 | 27.296 | 22.895 | 36.010 | 26.765 | 1'52.966C | 261,5 | 16:15'38.311 |
| 18 | 27.102 | | | | 4'13.074P | 261,5 | 16:19'51.385 |
| 19 | 39.369 | 26.239 | 38.782 | 28.144 | 2'12.534P | 147,7 | 16:22'03.919 |
| 20 | 30.170 | 23.283 | 35.678 | 26.662 | 1'55.793 | 237,4 | 16:23'59.712 |
| 21 | 26.724 | 22.975 | 35.171 | 26.556 | 1'51.426 | 259,6 | 16:25'51.138 |
| 22 | 26.529 | 22.368 | 35.316 | 26.582 | 1'50.795 | 261,5 | 16:27'41.933 |
| 23 | 26.613 | 22.528 | 35.792 | 26.599 | 1'51.532 | 261,5 | 16:29'33.465 |

| 18 W. MEZZETTI (1'52.189) | | | | | | | |
|---------------------------|---------------|---------------|---------------|---------------|-----------------|--------------|--------------|
| Giro | Seg.1 | Seg.2 | Seg.3 | Seg.4 | T. Giro | km/h | Local Time |
| 1 | 40.074 | 31.398 | 47.013 | 30.138 | 2'28.623P | 157,0 | 15:31'31.563 |
| 2 | 29.856 | 25.614 | 38.123 | 28.084 | 2'01.677 | 236,3 | 15:34'00.186 |
| 3 | 27.865 | 23.629 | 36.159 | 26.977 | 1'54.630C | 256,5 | 15:37'56.493 |
| 4 | 27.680 | 23.165 | 37.164 | 27.081 | 1'55.090 | 257,8 | 15:39'51.583 |
| 5 | 27.203 | 22.908 | 36.299 | 26.994 | 1'53.404 | 257,8 | 15:41'44.987 |
| 6 | 27.633 | 23.846 | 36.294 | 27.021 | 1'54.794 | 259,0 | 15:43'39.781 |
| 7 | 27.178 | 23.314 | 36.885 | 6'10.949 | 7'38.326P | 258,4 | 15:51'18.107 |
| 8 | 40.426 | 29.397 | 40.654 | 31.454 | 2'21.931P | 163,4 | 15:53'40.038 |
| 9 | 29.000 | 24.167 | 43.142 | 27.409 | 2'03.718 | 232,8 | 15:55'43.756 |
| 10 | 26.864 | 22.475 | 46.051 | 27.940 | 2'03.330 | 257,8 | 15:57'47.086 |
| 11 | 26.981 | 22.659 | 35.682 | 26.867 | 1'52.189 | 259,0 | 15:59'39.275 |
| 12 | 26.987 | 22.642 | 4'38.449 | 7'34.600 | 13'02.678P | 259,6 | 16:12'41.953 |
| 13 | 38.214 | 23.316 | 41.658 | 28.952 | 2'12.140P | 150,4 | 16:14'54.093 |
| 14 | 27.180 | 22.724 | 36.022 | 27.312 | 1'53.238 | 255,9 | 16:16'47.331 |
| 15 | 26.988 | 22.971 | 36.012 | 27.197 | 1'53.168 | 257,1 | 16:18'40.499 |
| 16 | 26.926 | 23.130 | 35.783 | 26.969 | 1'52.808 | 257,1 | 16:20'33.307 |
| 17 | 27.137 | 23.841 | 35.742 | 26.802 | 1'53.522 | 259,0 | 16:22'26.829 |
| 18 | 27.387 | | | | 7'57.068P | 260,2 | 16:30'23.897 |

| 14 L. ZENDELI (1'50.995) | | | | | | | |
|--------------------------|--------|---------------|---------------|---------------|-----------------|--------------|--------------|
| Giro | Seg.1 | Seg.2 | Seg.3 | Seg.4 | T. Giro | km/h | Local Time |
| 1 | 29.038 | 27.341 | 41.335 | 30.363 | 1'57.959 | 240,5 | 15:32'31.284 |
| 2 | 27.619 | 24.313 | 37.161 | 27.447 | 1'55.029 | 258,4 | 15:34'29.243 |
| 3 | 27.422 | 23.513 | 36.246 | 26.927 | 1'54.108 | 259,0 | 15:36'24.272 |
| 4 | 27.266 | 23.559 | 36.424 | 26.896 | 1'54.145 | 259,0 | 15:38'18.380 |
| 5 | 27.246 | 23.256 | 36.216 | 26.919 | 1'53.637 | 259,6 | 15:40'12.525 |
| 6 | 27.291 | 23.076 | 36.290 | 26.967 | 1'53.624 | 260,2 | 15:42'06.162 |
| 7 | 27.158 | | | | 5'07.302P | 259,6 | 15:43'59.786 |
| 8 | 49.983 | 23.363 | 40.299 | 26.912 | 2'20.557P | 171,2 | 15:49'07.088 |
| 9 | 27.268 | 23.373 | 36.131 | 26.772 | 1'53.544 | 259,0 | 15:51'27.645 |
| 10 | 27.236 | 23.242 | 35.951 | 26.864 | 1'53.293C | 261,5 | 15:53'21.189 |
| 11 | 27.240 | 23.178 | 36.172 | 26.831 | 1'53.421 | 260,2 | 15:55'14.482 |
| 12 | 27.175 | 23.095 | 36.038 | 27.007 | 1'53.315 | 261,5 | 15:57'07.903 |
| 13 | 27.366 | | | | 10'06.887P | 260,2 | 15:59'01.218 |
| 14 | 39.075 | 26.209 | 38.034 | 27.826 | 2'11.144P | 163,9 | 16:09'08.105 |
| 15 | 27.990 | 23.536 | 37.123 | 26.862 | 1'55.511 | 254,1 | 16:11'19.249 |
| 16 | 27.015 | 22.470 | 34.928 | 26.582 | 1'50.995 | 259,0 | 16:13'14.760 |
| 17 | 26.901 | 22.441 | 35.119 | 26.568 | 1'51.029 | 259,6 | 16:15'05.755 |
| 18 | 26.946 | 22.672 | 41.309 | 26.881 | 1'57.808 | 259,0 | 16:16'56.784 |
| 19 | 26.793 | 22.424 | 35.375 | 6'43.554 | 8'08.146P | 259,6 | 16:18'54.592 |
| 20 | 40.353 | 24.726 | 36.532 | 27.306 | 2'08.917P | 144,0 | 16:27'02.738 |
| | | | | | | | 16:29'11.655 |

| 19 H. HOFFNER (1'51.700) | | | | | | | |
|--------------------------|---------------|--------|--------|---------------|------------|--------------|--------------|
| Giro | Seg.1 | Seg.2 | Seg.3 | Seg.4 | T. Giro | km/h | Local Time |
| 1 | 41.274 | 29.414 | 42.328 | 29.850 | 2'22.866P | 121,3 | 15:31'01.456 |
| 2 | 30.684 | 24.449 | 38.189 | 27.245 | 2'00.567 | 201,5 | 15:33'24.322 |
| 3 | 27.585 | 23.168 | 36.410 | 27.004 | 1'54.167 | 259,0 | 15:35'24.889 |
| 4 | 27.374 | 23.267 | 35.928 | 26.915 | 1'53.484C | 258,4 | 15:37'19.056 |
| 5 | 27.534 | 23.453 | 35.981 | 27.347 | 1'54.315C | 259,0 | 15:39'12.540 |
| 6 | 27.198 | 23.150 | 35.794 | 26.897 | 1'53.039 | 259,6 | 15:41'06.855 |
| 7 | 27.095 | 22.985 | 35.824 | 26.978 | 1'52.882 | 259,0 | 15:42'59.894 |
| 8 | 27.232 | 22.903 | 36.002 | 26.889 | 1'53.026 | 259,6 | 15:44'52.776 |
| 9 | 27.471 | | | | 9'19.288P | 255,9 | 15:46'45.802 |
| 10 | 36.918 | 25.066 | 39.406 | 27.187 | 2'08.577P | 164,4 | 15:56'05.090 |
| 11 | 27.333 | 23.050 | 35.822 | 26.855 | 1'53.060C | 255,3 | 15:58'13.667 |
| 12 | 27.209 | 23.049 | 45.830 | 9'02.680 | 10'38.768P | 260,2 | 16:00'06.727 |
| 13 | 51.057 | 29.448 | 45.334 | 32.145 | 2'37.984P | 81,4 | 16:10'45.495 |
| 14 | 35.855 | 25.771 | 37.644 | 26.990 | 2'06.260 | 149,6 | 16:13'23.479 |
| 15 | 27.030 | 22.925 | 35.399 | 26.692 | 1'52.046 | 256,5 | 16:15'29.739 |
| 16 | 26.772 | 22.926 | 35.872 | 26.871 | 1'52.441 | 257,1 | 16:17'21.785 |
| | | | | | | | 16:19'14.226 |

ACI Racing Weekend Mugello, 12-13 Luglio 2025
Porsche Carrera Cup Italia - Analisi Tempi Prove Libere



Aut.Int. Mugello 5.245 m

| | | | | | | | | | | | | | | | |
|----|--------|---------------|---------------|--------|-----------------|-------|--------------|----|---------------|---------------|--------|----------|-----------|-------|--------------|
| 17 | 26.831 | 22.854 | 35.230 | 26.785 | 1'51.700 | 258,4 | 16:21'05.926 | 6 | 45.192 | | | | 4'17.575P | 260,2 | 15:45'42.777 |
| 18 | 26.855 | 22.778 | 35.500 | 26.925 | 1'52.058 | 259,0 | 16:22'57.984 | 7 | 39.316 | 27.957 | 39.598 | 30.576 | 2'17.447P | 142,5 | 15:48'00.224 |
| 19 | 27.037 | 25.237 | 41.903 | 27.801 | 2'01.978 | 257,8 | 16:24'59.962 | 8 | 32.869 | 25.508 | 38.566 | 28.002 | 2'04.945 | 178,8 | 15:50'05.169 |
| 20 | 27.067 | 24.278 | 41.150 | 27.879 | 2'00.374 | 256,5 | 16:27'00.336 | 9 | 26.968 | 22.668 | 38.158 | 8'13.565 | 9'41.359P | 257,8 | 15:59'46.528 |
| 21 | 26.918 | 22.826 | 35.432 | 26.875 | 1'52.051 | 256,5 | 16:28'52.387 | 10 | 36.633 | 25.961 | 44.884 | 4'47.339 | 6'34.817P | 167,7 | 16:06'21.345 |

20 B. YILDIRIM (1'53.926)

| Giro | Seg.1 | Seg.2 | Seg.3 | Seg.4 | T. Giro | km/h | Local Time |
|------|---------------|---------------|---------------|---------------|-----------------|--------------|--------------|
| | | | | | | | 15:30'47.084 |
| 1 | 42.888 | 28.943 | 43.343 | 31.235 | 2'26.409P | 130,8 | 15:33'13.493 |
| 2 | 31.687 | 27.599 | 41.585 | 29.149 | 2'10.020C | 223,6 | 15:35'23.513 |
| 3 | 29.126 | 25.180 | 37.784 | 27.832 | 1'59.922 | 257,1 | 15:37'23.435 |
| 4 | 28.234 | 24.049 | 37.171 | 28.020 | 1'57.474 | 259,0 | 15:39'20.909 |
| 5 | 27.951 | 23.800 | 36.721 | 27.389 | 1'55.861 | 258,4 | 15:41'16.770 |
| 6 | 27.655 | 24.293 | 38.366 | 28.035 | 1'58.349C | 259,6 | 15:43'15.119 |
| 7 | 27.582 | 23.576 | 36.833 | 27.285 | 1'55.276 | 260,2 | 15:45'10.395 |
| 8 | 27.558 | 23.818 | 36.987 | 27.187 | 1'55.550 | 258,4 | 15:47'05.945 |
| 9 | 27.857 | 23.725 | 36.756 | 3'42.068 | 5'10.406P | 257,8 | 15:52'16.351 |
| 10 | 37.852 | 25.572 | 39.896 | 27.989 | 2'11.309P | 168,2 | 15:54'27.660 |
| 11 | 28.365 | 24.324 | 38.131 | 27.155 | 1'57.975 | 260,2 | 15:56'25.635 |
| 12 | 27.657 | 25.040 | 37.070 | 27.226 | 1'56.993 | 260,2 | 15:58'22.628 |
| 13 | 28.408 | 24.773 | 37.121 | 27.156 | 1'57.458 | 260,9 | 16:00'20.086 |
| 14 | 27.837 | 23.793 | 43.555 | 4'42.931 | 6'18.116P | 260,9 | 16:06'38.202 |
| 15 | 41.613 | 27.394 | 41.074 | 30.610 | 2'20.691P | 128,1 | 16:08'58.893 |
| 16 | 31.399 | 25.138 | 43.336 | 28.712 | 2'08.585 | 199,6 | 16:11'07.478 |
| 17 | 27.911 | 23.657 | 36.663 | 27.157 | 1'55.388 | 259,0 | 16:13'02.866 |
| 18 | 27.551 | 23.544 | 36.229 | 26.990 | 1'54.314 | 259,0 | 16:14'57.180 |
| 19 | 27.663 | 23.385 | 36.375 | 26.829 | 1'54.252 | 261,5 | 16:16'51.432 |
| 20 | 27.906 | 24.119 | 37.223 | 26.795 | 1'56.043 | 262,8 | 16:18'47.475 |
| 21 | 27.364 | 23.472 | 36.184 | 26.906 | 1'53.926 | 260,2 | 16:20'41.401 |
| 22 | 27.391 | 23.258 | 36.676 | 2'55.732 | 4'23.057P | 260,2 | 16:25'04.458 |
| 23 | 40.078 | | | | 3'01.082P | 163,9 | 16:28'05.540 |

24 F. FANT (1'51.612)

| Giro | Seg.1 | Seg.2 | Seg.3 | Seg.4 | T. Giro | km/h | Local Time |
|------|---------------|---------------|---------------|---------------|-----------------|--------------|--------------|
| | | | | | | | 15:30'59.568 |
| 1 | 40.764 | 27.477 | 40.813 | 30.941 | 2'19.995P | 139,7 | 15:33'19.563 |
| 2 | 29.869 | 24.705 | 38.004 | 28.739 | 2'01.317 | 221,8 | 15:35'20.880 |
| 3 | 27.310 | 24.036 | 36.460 | 26.902 | 1'54.708 | 260,2 | 15:37'15.588 |
| 4 | 27.087 | 22.894 | 36.026 | 27.093 | 1'53.100 | 260,2 | 15:39'08.688 |
| 5 | 26.907 | 23.282 | 35.510 | 26.867 | 1'52.566 | 261,5 | 15:41'01.254 |
| 6 | 27.121 | 23.069 | 35.712 | 26.996 | 1'52.898 | 261,5 | 15:42'54.152 |
| 7 | 26.945 | 22.866 | 35.583 | 26.907 | 1'52.301 | 262,1 | 15:44'46.453 |
| 8 | 29.072 | | | | 5'11.365P | 243,8 | 15:49'57.818 |
| 9 | 36.158 | 25.581 | 38.120 | 29.993 | 2'09.852P | 171,7 | 15:52'07.670 |
| 10 | 27.094 | 23.632 | 37.008 | 29.339 | 1'57.073 | 261,5 | 15:54'04.743 |
| 11 | 27.184 | 23.126 | 36.059 | 26.960 | 1'53.329 | 262,8 | 15:55'58.072 |
| 12 | 27.190 | 22.867 | 35.777 | 26.810 | 1'52.644 | 261,5 | 15:57'50.716 |
| 13 | 27.105 | 22.948 | 35.826 | 26.776 | 1'52.655 | 261,5 | 15:59'43.371 |
| 14 | 27.093 | 23.027 | 35.907 | 7'05.147 | 8'31.174P | 262,8 | 16:08'14.545 |
| 15 | 37.232 | 25.318 | 38.155 | 29.824 | 2'10.529P | 159,8 | 16:10'25.074 |
| 16 | 28.086 | 25.168 | 36.566 | 4'41.840 | 6'11.660P | 260,2 | 16:16'36.734 |
| 17 | 41.467 | 27.555 | 39.500 | 29.158 | 2'17.680P | 114,8 | 16:18'54.414 |
| 18 | 30.325 | 24.964 | 36.070 | 26.996 | 1'58.355 | 200,0 | 16:20'52.769 |
| 19 | 26.934 | 22.860 | 35.231 | 26.587 | 1'51.612 | 261,5 | 16:22'44.381 |
| 20 | 26.828 | 22.786 | 35.396 | 26.619 | 1'51.629 | 260,2 | 16:24'36.010 |
| 21 | 26.922 | 22.894 | 35.407 | 26.691 | 1'51.914 | 260,2 | 16:26'27.924 |
| 22 | 26.787 | 22.827 | 35.438 | 26.609 | 1'51.661 | 260,2 | 16:28'19.585 |
| 23 | 26.751 | 22.799 | 35.841 | 26.827 | 1'52.218 | 261,5 | 16:30'11.803 |

25 L. CHELI (1'54.046)

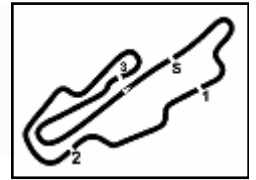
| Giro | Seg.1 | Seg.2 | Seg.3 | Seg.4 | T. Giro | km/h | Local Time |
|------|---------------|---------------|---------------|---------------|-----------------|--------------|--------------|
| | | | | | | | 15:31'38.222 |
| 1 | 41.945 | 27.229 | 41.998 | 28.843 | 2'20.015P | 126,8 | 15:33'58.237 |
| 2 | 29.377 | 25.504 | 39.449 | 28.185 | 2'02.515 | 254,1 | 15:36'00.752 |
| 3 | 28.648 | 25.214 | 38.146 | 27.395 | 1'59.403 | 255,9 | 15:38'00.155 |
| 4 | 28.078 | 23.980 | 37.990 | 27.184 | 1'57.232 | 259,0 | 15:39'57.387 |
| 5 | 27.973 | 24.029 | 37.170 | 27.324 | 1'56.496 | 260,2 | 15:41'53.883 |
| 6 | 28.034 | 23.669 | 38.916 | 27.170 | 1'57.789 | 260,2 | 15:43'51.672 |
| 7 | 27.618 | 23.735 | 36.962 | 27.133 | 1'55.448 | 260,2 | 15:45'47.120 |
| 8 | 27.920 | 23.839 | 37.032 | 27.226 | 1'56.017 | 259,0 | 15:47'43.137 |
| 9 | 30.487 | | | | 4'25.790P | 257,1 | 15:52'08.927 |
| 10 | 39.155 | 28.674 | 45.233 | 33.140 | 2'26.202P | 166,7 | 15:54'35.129 |
| 11 | 30.478 | 27.304 | 39.317 | 27.507 | 2'04.606 | 244,3 | 15:56'39.735 |
| 12 | 28.222 | 23.839 | 37.337 | 28.289 | 1'57.687 | 259,0 | 15:58'37.422 |
| 13 | 27.980 | 23.816 | 37.714 | 29.684 | 1'59.194C | 257,8 | 16:00'36.616 |
| 14 | 29.347 | | | | 11'41.153P | 247,7 | 16:12'17.769 |
| 15 | 41.455 | 26.894 | 41.282 | 29.543 | 2'19.174P | 145,6 | 16:14'36.943 |
| 16 | 30.031 | 24.937 | 43.461 | 28.887 | 2'07.316 | 251,2 | 16:16'44.259 |
| 17 | 28.438 | 23.703 | 38.284 | 27.291 | 1'57.716C | 252,3 | 16:18'41.975 |
| 18 | 27.336 | 23.540 | 36.191 | 26.979 | 1'54.046 | 259,0 | 16:20'36.021 |
| 19 | 27.517 | 23.455 | 38.733 | 8'55.803 | 10'25.508P | 259,6 | 16:31'01.529 |

23 M. SEGRE (1'52.315)

| Giro | Seg.1 | Seg.2 | Seg.3 | Seg.4 | T. Giro | km/h | Local Time |
|------|--------|--------|--------|--------|-----------|-------|--------------|
| | | | | | | | 15:31'09.530 |
| 1 | 42.253 | 29.144 | 42.952 | 32.317 | 2'26.666P | 123,1 | 15:33'36.196 |
| 2 | 31.244 | 27.002 | 38.130 | 28.204 | 2'04.580 | 209,7 | 15:35'40.776 |
| 3 | 28.054 | 23.883 | 36.719 | 27.537 | 1'56.193 | 259,6 | 15:37'36.969 |
| 4 | 27.656 | 23.258 | 36.208 | 27.081 | 1'54.203 | 259,0 | 15:39'31.172 |
| 5 | 27.639 | 23.133 | 36.098 | 27.160 | 1'54.030 | 259,0 | 15:41'25.202 |



ACI Racing Weekend Mugello, 12-13 Luglio 2025
Porsche Carrera Cup Italia - Analisi Tempi Prove Libere



Aut.Int. Mugello 5.245 m

4 / 7

26 M. MARCHIANTE (1'51.988)

| Giro | Seg.1 | Seg.2 | Seg.3 | Seg.4 | T. Giro | km/h | Local Time |
|------|--------|--------|--------|--------|-----------|-------|--------------|
| 1 | 43.045 | 27.229 | 42.964 | 32.722 | 2'25.960P | 126,6 | 15:33'10.743 |
| 2 | 33.375 | | 40.263 | 28.723 | 3'45.800P | 197,4 | 15:36'56.543 |
| 3 | 39.463 | 24.777 | 37.865 | 28.876 | 2'01.755 | 228,8 | 15:41'11.524 |
| 4 | 30.392 | 24.622 | 36.076 | 27.102 | 1'54.092C | 258,4 | 15:43'05.616 |
| 5 | 27.442 | 23.472 | 26.910 | 26.910 | 1'53.041C | 260,2 | 15:44'58.657 |
| 6 | 27.146 | 22.865 | 36.038 | 26.811 | 1'53.103C | 260,2 | 15:46'51.760 |
| 7 | 27.287 | 22.967 | 36.038 | 26.811 | 1'53.103C | 260,2 | 15:46'51.760 |
| 8 | 27.511 | 23.563 | 37.456 | 27.353 | 1'55.883 | 260,2 | 15:48'47.643 |
| 9 | 27.312 | 23.104 | 36.548 | 27.099 | 1'54.063C | 257,1 | 15:50'41.706 |
| 10 | 27.283 | | | | 5'48.839P | 259,0 | 15:56'30.545 |
| 11 | 39.747 | 27.396 | 37.682 | 28.407 | 2'13.232P | 170,3 | 15:58'43.777 |
| 12 | 27.167 | 23.159 | 36.032 | 27.002 | 1'53.360 | 259,0 | 16:00'37.137 |
| 13 | 27.119 | | | | 5'47.443P | 262,8 | 16:06'24.580 |
| 14 | 38.650 | 26.642 | 38.827 | 28.259 | 2'12.378P | 164,9 | 16:08'36.958 |
| 15 | 28.978 | 24.100 | 41.252 | 28.577 | 2'02.907 | 186,9 | 16:10'39.865 |
| 16 | 27.026 | 22.765 | 35.570 | 26.814 | 1'52.175 | 260,2 | 16:12'32.040 |
| 17 | 26.894 | 22.737 | 35.631 | 26.726 | 1'51.988 | 260,2 | 16:14'24.028 |
| 18 | 30.080 | 27.103 | 42.761 | 27.107 | 2'07.051C | 225,9 | 16:16'31.079 |
| 19 | 27.005 | 22.606 | 35.737 | 26.654 | 1'52.002 | 260,2 | 16:18'23.081 |
| 20 | 33.128 | | | | 2'56.707P | 260,2 | 16:21'19.788 |
| 21 | 35.144 | 24.646 | 37.148 | 27.034 | 2'03.972P | 169,8 | 16:23'23.760 |
| 22 | 27.182 | 22.977 | 40.400 | 30.795 | 2'01.354 | 259,6 | 16:25'25.114 |
| 23 | 27.163 | 22.937 | 35.997 | 26.838 | 1'52.935 | 257,1 | 16:27'18.049 |
| 24 | 28.351 | | | | 1'49.255P | 260,9 | 16:29'07.304 |

| | | | | | | | | | |
|----|--------|--------|--------|----------|-----------|-------|--------------|-------|--------------|
| 15 | 27.062 | | | | | | 3'20.295P | 260,9 | 16:15'35.769 |
| 16 | 42.991 | 32.125 | 43.076 | 28.064 | 2'26.256P | 139,9 | 16:18'02.025 | | |
| 17 | 27.288 | 22.437 | 34.828 | 26.664 | 1'51.217 | 254,7 | 16:19'53.242 | | |
| 18 | 26.783 | 22.360 | 34.937 | 26.627 | 1'50.707 | 258,4 | 16:21'43.949 | | |
| 19 | 26.805 | 22.652 | 35.100 | 26.625 | 1'51.182 | 260,2 | 16:23'35.131 | | |
| 20 | 26.671 | 22.528 | 35.413 | 4'00.036 | 5'24.648P | 260,2 | 16:28'59.779 | | |

30 N. SCHAAP (1'51.787)

| Giro | Seg.1 | Seg.2 | Seg.3 | Seg.4 | T. Giro | km/h | Local Time |
|------|--------|--------|--------|----------|------------|-------|--------------|
| | | | | | | | 15:31'21.249 |
| 1 | 42.157 | 26.591 | 40.649 | 29.604 | 2'19.001P | 126,2 | 15:33'40.250 |
| 2 | 29.646 | 24.127 | 37.188 | 27.147 | 1'58.108 | 195,3 | 15:35'38.358 |
| 3 | 27.502 | 23.235 | 36.311 | 26.989 | 1'54.037 | 259,6 | 15:37'32.395 |
| 4 | 27.549 | 23.217 | 36.053 | 26.982 | 1'53.801 | 259,0 | 15:39'26.196 |
| 5 | 27.335 | 23.151 | 36.068 | 27.023 | 1'53.577 | 260,2 | 15:41'19.773 |
| 6 | 27.275 | 22.979 | 36.477 | 27.687 | 1'54.418 | 260,9 | 15:43'14.191 |
| 7 | 27.641 | 22.937 | 35.856 | 27.104 | 1'53.538C | 257,8 | 15:45'07.729 |
| 8 | 27.262 | | | | 5'03.557P | 259,0 | 15:50'11.286 |
| 9 | 37.661 | 23.334 | 36.477 | 27.034 | 2'04.506CP | 152,5 | 15:52'15.792 |
| 10 | 27.233 | 23.015 | 36.629 | 27.131 | 1'54.008 | 261,5 | 15:54'09.800 |
| 11 | 27.365 | | | | 3'31.805P | 261,5 | 15:57'41.605 |
| 12 | 38.125 | 23.693 | 36.390 | 27.129 | 2'05.337P | 142,3 | 15:59'46.942 |
| 13 | 27.337 | 23.208 | 37.038 | 6'32.184 | 7'59.767P | 259,6 | 16:07'46.709 |
| 14 | 39.988 | 27.345 | 41.491 | 1'59.583 | 3'48.407P | 155,4 | 16:11'35.116 |
| 15 | 56.256 | 25.411 | 37.839 | 28.443 | 2'27.949P | 164,4 | 16:14'03.065 |
| 16 | 27.343 | 22.820 | 35.596 | 26.673 | 1'52.432 | 252,3 | 16:15'55.497 |
| 17 | 26.899 | 22.718 | 35.570 | 26.790 | 1'51.977 | 260,2 | 16:17'47.474 |
| 18 | 27.021 | 22.610 | 37.575 | 27.532 | 1'54.738 | 259,0 | 16:19'42.212 |
| 19 | 27.105 | | | | 3'19.989P | 257,8 | 16:23'02.201 |
| 20 | 45.936 | 23.737 | 35.977 | 26.889 | 2'12.539P | 154,1 | 16:25'14.740 |
| 21 | 27.124 | 22.684 | 35.644 | 26.785 | 1'52.237 | 257,1 | 16:27'06.977 |
| 22 | 26.859 | 22.477 | 35.595 | 26.856 | 1'51.787 | 259,6 | 16:28'58.764 |
| 23 | 27.074 | 24.621 | 37.638 | 27.193 | 1'56.526 | 259,0 | 16:30'55.290 |

32 G. QUARESMINI (1'51.349)

| Giro | Seg.1 | Seg.2 | Seg.3 | Seg.4 | T. Giro | km/h | Local Time |
|------|--------|--------|--------|--------|------------|-------|--------------|
| | | | | | | | 15:32'52.359 |
| 1 | 40.143 | 25.620 | 37.793 | 28.513 | 2'12.069P | 155,4 | 15:35'04.428 |
| 2 | 28.177 | 24.083 | 36.585 | 27.003 | 1'55.848 | 254,7 | 15:37'00.276 |
| 3 | 27.062 | 22.941 | 36.074 | 26.754 | 1'52.831 | 257,8 | 15:38'53.107 |
| 4 | 27.403 | 22.932 | 35.854 | 26.709 | 1'52.898 | 260,2 | 15:40'46.005 |
| 5 | 27.024 | 22.797 | 35.462 | 26.728 | 1'52.011 | 259,0 | 15:42'38.016 |
| 6 | 26.994 | 23.273 | 39.155 | 29.946 | 1'59.368 | 260,9 | 15:44'37.384 |
| 7 | 26.882 | 22.748 | 35.558 | 26.949 | 1'52.137 | 257,8 | 15:46'29.521 |
| 8 | 27.082 | | | | 8'56.055P | 257,8 | 15:55'25.576 |
| 9 | 37.438 | 23.509 | 36.057 | 27.657 | 2'04.661P | 172,2 | 15:57'30.237 |
| 10 | 27.027 | 22.880 | 37.362 | 26.836 | 1'54.105 | 257,8 | 15:59'24.342 |
| 11 | 27.056 | 22.784 | 35.690 | 26.723 | 1'52.253 | 259,0 | 16:01'16.595 |
| 12 | 39.553 | | | | 12'16.675P | 176,5 | 16:13'33.270 |
| 13 | 42.168 | | | | 1'39.000P | 137,4 | 16:15'12.270 |
| 14 | 38.554 | 24.284 | 38.824 | 26.957 | 2'08.619P | 170,1 | 16:17'20.889 |
| 15 | 27.130 | 23.103 | 39.661 | 28.861 | 1'58.755 | 256,5 | 16:19'19.644 |
| 16 | 27.152 | 22.742 | 35.315 | 26.606 | 1'51.815 | 258,4 | 16:21'11.459 |
| 17 | 26.954 | 22.771 | 36.051 | 27.565 | 1'53.341 | 260,2 | 16:23'04.800 |
| 18 | 26.971 | 22.646 | 35.116 | 26.616 | 1'51.349 | 258,4 | 16:24'56.149 |
| 19 | 27.876 | 24.383 | 39.295 | 28.716 | 2'00.270 | 259,6 | 16:26'56.419 |
| 20 | 26.911 | 22.695 | 35.364 | 26.640 | 1'51.610 | 258,4 | 16:28'48.029 |
| 21 | 28.007 | | | | 1'23.176P | 259,0 | 16:30'11.205 |

33 S. TITARENKO (1'52.250)

| Giro | Seg.1 | Seg.2 | Seg.3 | Seg.4 | T. Giro | km/h | Local Time |
|------|--------|--------|--------|--------|-----------|-------|--------------|
| | | | | | | | 15:30'20.924 |
| 1 | 38.817 | 26.860 | 40.947 | 29.967 | 2'16.591P | 164,4 | 15:32'37.515 |
| 2 | 28.211 | 24.093 | 37.191 | 27.401 | 1'56.896C | 254,7 | 15:34'34.411 |
| 3 | 27.673 | 23.797 | 36.750 | 27.399 | 1'55.619 | 258,4 | 15:36'30.030 |
| 4 | 27.614 | 23.644 | 36.491 | 27.172 | 1'54.921 | 259,0 | 15:38'24.951 |
| 5 | 27.801 | 23.379 | 36.449 | 27.236 | 1'54.865 | 258,4 | 15:40'19.816 |

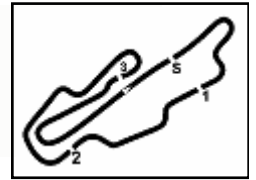
27 G. GUIRRERI (1'52.315)

| Giro | Seg.1 | Seg.2 | Seg.3 | Seg.4 | T. Giro | km/h | Local Time |
|------|--------|--------|--------|----------|------------|-------|--------------|
| | | | | | | | 15:34'34.872 |
| 1 | 41.670 | 33.428 | 43.941 | 30.132 | 2'29.171P | 146,9 | 15:37'04.043 |
| 2 | 33.134 | 26.761 | 38.920 | 27.429 | 2'06.244 | 205,3 | 15:39'10.287 |
| 3 | 27.441 | 23.543 | 35.934 | 27.286 | 1'54.204 | 259,0 | 15:41'04.491 |
| 4 | 27.318 | 23.411 | 35.760 | 27.077 | 1'53.566 | 260,2 | 15:42'58.057 |
| 5 | 27.084 | 23.104 | 35.810 | 27.314 | 1'53.312 | 259,0 | 15:44'51.369 |
| 6 | 27.289 | 23.280 | 35.879 | 4'50.539 | 6'16.987P | 258,4 | 15:51'08.356 |
| 7 | 34.705 | 23.930 | 36.269 | 27.130 | 2'02.034P | 167,2 | 15:53'10.390 |
| 8 | 27.209 | 23.314 | 35.800 | 27.036 | 1'53.359 | 260,9 | 15:55'03.749 |
| 9 | 27.111 | 23.284 | 36.336 | 27.154 | 1'53.885 | 260,9 | 15:56'57.634 |
| 10 | 27.632 | 23.289 | 36.400 | 8'45.728 | 10'13.049P | 259,6 | 16:07'10.683 |
| 11 | 40.403 | 27.164 | 39.336 | 30.616 | 2'17.519P | 145,6 | 16:09'28.202 |
| 12 | 29.170 | 23.289 | 36.220 | 27.180 | 1'55.859C | 239,5 | 16:11'24.061 |
| 13 | 27.116 | 23.041 | 35.695 | 26.927 | 1'52.779 | 260,2 | 16:13'16.840 |
| 14 | 26.929 | 22.860 | 35.674 | 26.852 | 1'52.315 | 261,5 | 16:15'09.155 |
| 15 | 27.008 | 22.879 | 35.636 | 26.854 | 1'52.377 | 259,0 | 16:17'01.532 |
| 16 | 26.908 | 23.019 | 38.504 | 6'08.811 | 7'37.242P | 259,0 | 16:24'38.774 |
| 17 | 35.959 | 23.355 | 35.757 | 26.796 | 2'01.867CP | 142,9 | 16:26'40.641 |
| 18 | 27.119 | 22.716 | 36.780 | 27.130 | 1'53.745 | 260,2 | 16:28'34.386 |

28 G. AMATI (1'50.707)

| Giro | Seg.1 | Seg.2 | Seg.3 | Seg.4 | T. Giro | km/h | Local Time |
|------|--------|--------|--------|----------|-----------|-------|--------------|
| | | | | | | | 15:35'40.126 |
| 1 | 42.268 | 32.281 | 47.579 | 32.552 | 2'34.680P | 130,6 | 15:38'14.806 |
| 2 | 30.183 | 28.718 | 38.085 | 32.133 | 2'09.119C | 232,8 | 15:40'23.925 |
| 3 | 27.341 | 23.623 | 35.822 | 26.915 | 1'53.701C | 257,1 | 15:42'17.626 |
| 4 | 27.083 | 23.193 | 35.561 | 27.011 | 1'52.848C | 259,0 | 15:44'10.474 |
| 5 | 27.180 | 22.958 | 35.457 | 3'56.850 | 5'22.445P | 259,0 | 15:49'32.919 |
| 6 | 34.998 | 23.716 | 36.650 | 27.047 | 2'02.411P | 169,0 | 15:51'35.330 |
| 7 | 27.028 | 24.601 | 38.555 | 27.085 | 1'57.269 | 260,2 | 15:53'32.599 |
| 8 | 27.324 | 22.905 | 35.493 | 26.888 | 1'52.610 | 262,8 | 15:55'25.209 |
| 9 | 27.765 | 24.667 | 41.731 | 27.191 | 2'01.354 | 261,5 | 15:57'26.563 |
| 10 | 27.267 | 22.917 | 35.740 | 27.016 | 1'52.940 | 260,2 | 15:59'19.503 |
| 11 | 27.814 | | | | 7'06.776P | 260,2 | 16:06'26.279 |
| 12 | 36.322 | 23.816 | 36.458 | 27.031 | 2'03.627P | 168,5 | 16:08'29.906 |
| 13 | 27.219 | 22.942 | 35.880 | 26.917 | 1'52.958 | 260,2 | 16:10'22.864 |
| 14 | 27.047 | 22.862 | 35.608 | 27.093 | 1'52.610 | 260,9 | 16:12'15.474 |

ACI Racing Weekend Mugello, 12-13 Luglio 2025
Porsche Carrera Cup Italia - Analisi Tempi Prove Libere



Aut.Int. Mugello 5.245 m

5 / 7

| | | | | | | | | | | | | | | | |
|----|---------------|---------------|---------------|---------------|-----------------|--------------|--------------|----|---------------|---------------|---------------|---------------|-----------------|--------------|--------------|
| 6 | 27.404 | 23.409 | 36.424 | 27.384 | 1'54.621 | 258,4 | 15:42'14.437 | 1 | 39.761 | 27.405 | 40.029 | 28.035 | 2'15.230P | 161,2 | 15:32'28.140 |
| 7 | 27.486 | 23.505 | 36.671 | 27.394 | 1'55.056 | 259,6 | 15:44'09.493 | 2 | 28.650 | 24.061 | 36.816 | 27.591 | 1'57.118C | 252,3 | 15:34'25.258 |
| 8 | 27.767 | 24.303 | 36.625 | 27.725 | 1'56.420 | 258,4 | 15:46'05.913 | 3 | 27.402 | 23.498 | 36.115 | 27.083 | 1'54.098C | 256,5 | 15:36'19.356 |
| 9 | 27.589 | 23.322 | 36.190 | 27.197 | 1'54.298 | 255,9 | 15:48'00.211 | 4 | 27.425 | | | | 4'51.637P | 258,4 | 15:41'10.993 |
| 10 | 27.689 | | | | 4'04.038P | 256,5 | 15:52'04.249 | 5 | 37.606 | 23.937 | 38.071 | 35.840 | 2'15.454P | 168,2 | 15:43'26.447 |
| 11 | 41.155 | 27.445 | 40.089 | 31.295 | 2'19.984P | 155,0 | 15:54'24.233 | 6 | 27.305 | 23.294 | 35.814 | 27.131 | 1'53.544 | 255,9 | 15:45'19.991 |
| 12 | 34.167 | 27.136 | 38.366 | 27.703 | 2'07.372 | 210,5 | 15:56'31.605 | 7 | 27.400 | 22.880 | 35.796 | 26.907 | 1'52.983 | 257,1 | 15:47'12.974 |
| 13 | 27.174 | 22.884 | 35.375 | 26.891 | 1'52.324 | 258,4 | 15:58'23.929 | 8 | 27.763 | | | | 3'30.850P | 257,1 | 15:50'43.824 |
| 14 | 27.109 | 22.675 | 35.628 | 26.838 | 1'52.250 | 259,6 | 16:00'16.179 | 9 | 37.976 | 26.015 | 39.293 | 28.243 | 2'11.527P | 157,4 | 15:52'55.351 |
| 15 | 27.244 | 22.920 | 41.271 | 6'13.079 | 7'44.514P | 259,6 | 16:08'00.693 | 10 | 28.684 | 24.164 | 36.392 | 36.111 | 2'05.351 | 255,9 | 15:55'00.702 |
| 16 | 55.872 | 27.324 | 38.219 | 27.662 | 2'29.077P | 169,8 | 16:10'29.770 | 11 | 27.400 | 22.707 | 35.534 | 26.673 | 1'52.055 | 259,6 | 15:56'52.757 |
| 17 | 28.151 | | | | 8'14.193P | 259,0 | 16:18'43.963 | 12 | 27.126 | 22.750 | 35.460 | 26.583 | 1'51.919 | 259,0 | 15:58'44.676 |
| 18 | 47.036 | 26.511 | 38.203 | 27.382 | 2'19.132P | 148,1 | 16:21'03.095 | 13 | 27.654 | | | | 7'27.518P | 260,2 | 16:06'12.194 |
| 19 | 27.375 | 23.066 | 35.635 | 5'05.011 | 6'31.087P | 259,0 | 16:27'34.182 | 14 | 38.901 | 23.765 | 36.875 | 26.961 | 2'06.502P | 128,4 | 16:08'18.696 |
| 20 | 37.229 | 23.406 | 35.807 | 26.989 | 2'03.431P | 168,2 | 16:29'37.613 | 15 | 27.185 | 23.046 | 36.225 | 26.952 | 1'53.408 | 257,8 | 16:10'12.104 |
| 21 | 27.037 | 22.818 | 35.862 | 26.904 | 1'52.621 | 258,4 | 16:31'30.234 | 16 | 27.357 | | | | 5'32.575P | 259,0 | 16:15'44.679 |
| | | | | | | | | 17 | 41.863 | 29.243 | 40.611 | 29.754 | 2'21.471P | 147,1 | 16:18'06.150 |
| | | | | | | | | 18 | 28.881 | 24.615 | 37.118 | 26.723 | 1'57.337 | 250,0 | 16:20'03.487 |
| | | | | | | | | 19 | 26.758 | 22.284 | 34.788 | 26.417 | 1'50.247 | 257,1 | 16:21'53.734 |
| | | | | | | | | 20 | 26.723 | 22.388 | 35.108 | 26.428 | 1'50.647 | 259,0 | 16:23'44.381 |
| | | | | | | | | 21 | 26.805 | 22.498 | 35.398 | 26.543 | 1'51.244 | 258,4 | 16:25'35.625 |
| | | | | | | | | 22 | 26.936 | 22.583 | 35.637 | 26.638 | 1'51.794 | 259,0 | 16:27'27.419 |
| | | | | | | | | 23 | 26.900 | 22.647 | 35.658 | 26.603 | 1'51.808 | 259,0 | 16:29'19.227 |
| | | | | | | | | 24 | 26.980 | 22.737 | 35.564 | 26.704 | 1'51.985 | 259,6 | 16:31'11.212 |

34 D. SCHOUTEN (1'51.034)

| Giro | Seg.1 | Seg.2 | Seg.3 | Seg.4 | T. Giro | km/h | Local Time |
|------|---------------|---------------|---------------|---------------|-----------|--------------|--------------|
| | | | | | | | 15:31'07.144 |
| 1 | 39.714 | 26.423 | 39.390 | 29.514 | 2'15.041P | 132,4 | 15:33'22.185 |
| 2 | 29.225 | 24.051 | 36.979 | 27.031 | 1'57.286 | 214,3 | 15:35'19.471 |
| 3 | 27.247 | 23.633 | 35.848 | 26.939 | 1'53.667 | 260,2 | 15:37'13.138 |
| 4 | 27.029 | 23.324 | 35.638 | 26.669 | 1'52.660 | | 15:39'05.798 |
| 5 | 26.973 | 23.154 | 35.661 | 26.843 | 1'52.631 | 261,5 | 15:40'58.429 |
| 6 | 27.547 | 23.168 | 35.476 | 26.774 | 1'52.965 | 260,2 | 15:42'51.394 |
| 7 | 27.012 | 22.888 | 35.962 | 3'51.932 | 5'17.794P | 260,2 | 15:48'09.188 |
| 8 | 34.134 | 23.173 | 35.896 | 26.928 | 2'00.131P | 170,6 | 15:50'09.319 |
| 9 | 27.331 | 23.186 | 36.481 | 26.784 | 1'53.782 | 260,2 | 15:52'03.101 |
| 10 | 27.085 | 23.163 | 35.922 | 26.794 | 1'52.964 | | 15:53'56.065 |
| 11 | 26.990 | 23.000 | 36.942 | 26.847 | 1'53.779 | | 15:55'49.844 |
| 12 | 27.158 | 23.036 | 37.934 | 26.825 | 1'54.953 | 261,5 | 15:57'44.797 |
| 13 | 26.997 | 22.792 | 36.185 | 26.898 | 1'52.872 | | 15:59'37.669 |
| 14 | 27.294 | | | | 7'12.638P | 261,5 | 16:06'50.307 |
| 15 | 37.745 | 26.505 | 40.237 | 29.436 | 2'13.923P | 164,4 | 16:09'04.230 |
| 16 | 29.257 | 26.226 | 37.549 | 28.210 | 2'01.242 | | 16:11'05.472 |
| 17 | 26.883 | 22.534 | 35.128 | 26.953 | 1'51.498 | | 16:12'56.970 |
| 18 | 26.669 | 22.509 | 35.180 | 26.676 | 1'51.034 | | 16:14'48.004 |
| 19 | 26.763 | 22.658 | 35.884 | 4'29.395 | 5'54.700P | 260,2 | 16:20'42.704 |
| 20 | 36.126 | 24.875 | 35.979 | 27.811 | 2'04.791P | 154,1 | 16:22'47.495 |
| 21 | 26.636 | 22.608 | 35.377 | 26.548 | 1'51.169 | 260,2 | 16:24'38.664 |
| 22 | 26.977 | 22.562 | 35.801 | 26.718 | 1'52.058 | | 16:26'30.722 |
| 23 | 26.830 | 22.579 | 35.612 | 26.700 | 1'51.721 | | 16:28'22.443 |
| 24 | 27.181 | | | | 2'44.517P | | 16:31'06.960 |

46 N. PUJATTI (1'51.419)

| Giro | Seg.1 | Seg.2 | Seg.3 | Seg.4 | T. Giro | km/h | Local Time |
|------|---------------|---------------|---------------|---------------|-----------------|--------------|--------------|
| | | | | | | | 15:30'30.065 |
| 1 | 39.174 | 28.892 | 41.335 | 31.102 | 2'20.503P | 165,1 | 15:32'50.568 |
| 2 | 30.603 | 25.273 | 37.460 | 27.572 | 2'00.908 | 211,4 | 15:34'51.476 |
| 3 | 29.072 | 23.606 | 36.373 | 27.264 | 1'56.315C | 260,2 | 15:36'47.791 |
| 4 | 27.469 | 23.292 | 36.259 | 26.865 | 1'53.885 | 257,8 | 15:38'41.676 |
| 5 | 27.692 | 23.108 | 36.163 | 26.868 | 1'53.831 | 259,6 | 15:40'35.507 |
| 6 | 27.276 | 23.291 | 36.421 | 4'19.016 | 5'46.004P | 259,0 | 15:46'21.511 |
| 7 | 36.902 | 23.199 | 36.534 | 28.139 | 2'04.774CP | 171,7 | 15:48'26.285 |
| 8 | 27.352 | 23.346 | 36.411 | 26.850 | 1'53.959 | 255,9 | 15:50'20.244 |
| 9 | 27.410 | 23.138 | 36.263 | 26.908 | 1'53.719 | 259,0 | 15:52'13.963 |
| 10 | 28.691 | 24.445 | 36.430 | 4'12.423 | 5'41.989P | 262,8 | 15:57'55.952 |
| 11 | 37.732 | | | | 1'42.063P | 157,4 | 15:59'38.015 |
| 12 | 38.597 | 24.820 | 46.877 | 5'52.292 | 7'42.586P | 155,8 | 16:07'20.601 |
| 13 | 36.269 | 27.227 | 43.617 | 27.741 | 2'14.854P | 169,3 | 16:09'35.455 |
| 14 | 27.044 | 22.835 | 35.422 | 26.752 | 1'52.053 | 259,0 | 16:11'27.508 |
| 15 | 26.767 | 22.589 | 35.318 | 26.745 | 1'51.419 | 261,5 | 16:13'18.927 |
| 16 | 27.681 | | | | 11'27.587P | 260,9 | 16:24'46.514 |
| 17 | 35.019 | 23.102 | 38.269 | 28.634 | 2'05.024CP | 169,8 | 16:26'51.538 |
| 18 | 27.046 | 22.729 | 35.521 | 26.692 | 1'51.988C | 255,9 | 16:28'43.526 |
| 19 | 26.785 | 22.750 | 35.508 | 26.605 | 1'51.648 | 261,5 | 16:30'35.174 |

35 P. DELLI GUANTI (1'50.864)

| Giro | Seg.1 | Seg.2 | Seg.3 | Seg.4 | T. Giro | km/h | Local Time |
|------|---------------|---------------|---------------|---------------|-----------------|--------------|--------------|
| | | | | | | | 15:39'26.705 |
| 1 | 40.199 | 26.159 | 38.790 | 28.744 | 2'13.892P | 115,6 | 15:41'40.597 |
| 2 | 29.966 | 24.396 | 36.519 | 27.191 | 1'58.072 | 212,6 | 15:43'38.669 |
| 3 | 27.146 | 22.975 | 35.976 | 26.875 | 1'52.972 | 259,0 | 15:45'31.641 |
| 4 | 26.958 | 22.699 | 35.623 | 26.688 | 1'51.968 | | 15:47'23.609 |
| 5 | 27.136 | 22.907 | 36.134 | 4'10.838 | 5'37.015P | | 15:53'00.624 |
| 6 | 49.725 | 24.572 | 36.725 | 26.902 | 2'17.924P | | 15:55'18.548 |
| 7 | 27.115 | 22.832 | 35.837 | 27.792 | 1'53.576C | | 15:57'12.124 |
| 8 | 27.066 | 22.725 | 36.040 | 27.202 | 1'53.033C | | 15:59'05.157 |
| 9 | 27.044 | 22.896 | 35.858 | 26.821 | 1'52.619C | | 16:00'57.776 |
| 10 | 27.615 | | | | 12'09.662P | | 16:13'07.438 |
| 11 | 42.044 | 26.975 | 40.481 | 29.289 | 2'18.789P | 123,1 | 16:15'26.227 |
| 12 | 29.667 | 26.093 | 37.877 | 26.713 | 2'00.350 | | 16:17'26.577 |
| 13 | 26.747 | 22.587 | 35.281 | 26.563 | 1'51.178 | | 16:19'17.755 |
| 14 | 26.598 | 22.454 | 35.305 | 26.507 | 1'50.864 | | 16:21'08.619 |
| 15 | 27.167 | | | | 10'16.260P | | 16:31'24.879 |

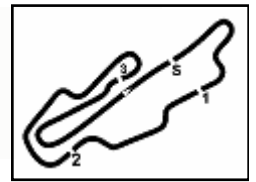
50 F. FENICI (1'53.680)

| Giro | Seg.1 | Seg.2 | Seg.3 | Seg.4 | T. Giro | km/h | Local Time |
|------|---------------|--------|---------------|---------------|-----------------|--------------|--------------|
| | | | | | | | 15:30'36.325 |
| 1 | 44.170 | 30.663 | 43.132 | 34.079 | 2'32.044P | 112,3 | 15:33'08.369 |
| 2 | 32.006 | 26.392 | 40.786 | 29.593 | 2'08.777 | 195,3 | 15:35'17.146 |
| 3 | 28.890 | 26.699 | 40.873 | 28.745 | 2'05.207 | 255,3 | 15:37'22.353 |
| 4 | 28.390 | 24.167 | 37.780 | 28.924 | 1'59.261 | 256,5 | 15:39'21.614 |
| 5 | 28.735 | | | | 6'23.263P | 260,9 | 15:45'44.877 |
| 6 | 37.860 | 27.832 | 39.960 | 31.987 | 2'17.639P | 168,8 | 15:48'02.516 |
| 7 | 28.445 | 23.769 | 37.028 | 27.517 | 1'56.759 | 250,6 | 15:49'59.275 |
| 8 | 27.930 | 23.795 | 37.510 | 27.372 | 1'56.607 | 255,9 | 15:51'55.882 |
| 9 | 27.940 | 23.834 | 37.123 | 27.670 | 1'56.567 | 260,9 | 15:53'52.449 |
| 10 | 27.690 | 23.757 | 36.961 | 27.270 | 1'55.678 | 261,5 | 15:55'48.127 |
| 11 | 27.676 | 23.819 | 38.988 | 9'09.579 | 10'40.062P | 260,9 | 16:06'28.189 |
| 12 | 40.330 | 28.692 | 40.986 | 32.912 | 2'22.920P | 136,7 | 16:08'51.109 |
| 13 | 31.914 | 25.476 | 38.136 | 28.886 | 2'04.412 | 208,1 | 16:10'55.521 |
| 14 | 27.584 | 23.462 | 36.231 | 27.278 | 1'54.555 | 257,1 | 16:12'50.076 |
| 15 | 27.426 | 23.500 | 39.184 | 29.455 | 1'59.565 | 259,0 | 16:14'49.641 |
| 16 | 27.458 | 23.517 | 36.117 | 27.214 | 1'54.306 | 258,4 | 16:16'43.947 |
| 17 | 27.368 | 23.210 | 36.116 | 26.986 | 1'53.680 | 259,0 | 16:18'37.627 |

38 S. IAQUINTA (1'50.247)

| Giro | Seg.1 | Seg.2 | Seg.3 | Seg.4 | T. Giro | km/h | Local Time |
|------|-------|-------|-------|-------|---------|------|------------|
|------|-------|-------|-------|-------|---------|------|------------|

ACI Racing Weekend Mugello, 12-13 Luglio 2025
Porsche Carrera Cup Italia - Analisi Tempi Prove Libere



Aut.Int. Mugello 5.245 m

6 / 7

| | | | | | | | |
|----|--------|---------------|--------|--------|----------|-------|--------------|
| 18 | 27.459 | 23.253 | 36.569 | 27.147 | 1'54.428 | 258,4 | 16:20'32.055 |
| 19 | 27.510 | 23.362 | 36.329 | 27.157 | 1'54.358 | 259,0 | 16:22'26.413 |
| 20 | 27.404 | 23.284 | 36.371 | 27.222 | 1'54.281 | 259,0 | 16:24'20.694 |
| 21 | 27.388 | 23.138 | 36.691 | 27.216 | 1'54.433 | 259,0 | 16:26'15.127 |
| 22 | 27.438 | 23.182 | 36.386 | 27.010 | 1'54.016 | 260,2 | 16:28'09.143 |
| 23 | 27.420 | 23.017 | 36.689 | 27.041 | 1'54.167 | 259,6 | 16:30'03.310 |

| | | | | | | | |
|----|---------------|---------------|---------------|---------------|-----------------|--------------|--------------|
| 13 | 27.681 | 23.051 | 36.312 | 26.954 | 1'53.998 | 257,8 | 16:00'44.405 |
| 14 | 27.713 | | | 8'51.443P | 260,2 | 16:09'35.848 | |
| 15 | 39.955 | 26.523 | 39.004 | 31.677 | 2'17.159P | 161,7 | 16:11'53.007 |
| 16 | 29.503 | 24.106 | 37.593 | 27.271 | 1'58.473 | 243,8 | 16:13'51.480 |
| 17 | 29.187 | 26.286 | 38.735 | 27.638 | 2'01.846 | 257,8 | 16:15'53.326 |
| 18 | 27.296 | 22.765 | 35.314 | 26.810 | 1'52.185 | 255,9 | 16:17'45.511 |
| 19 | 27.126 | 22.790 | 35.520 | 26.703 | 1'52.139 | 257,8 | 16:19'37.650 |
| 20 | 27.064 | 23.095 | 39.839 | 2'50.045 | 4'20.043P | 257,8 | 16:23'57.693 |
| 21 | 35.090 | 24.098 | 38.195 | 27.133 | 2'04.516P | 169,5 | 16:26'02.209 |
| 22 | 27.060 | 22.851 | 35.689 | 26.835 | 1'52.435 | 257,8 | 16:27'54.644 |
| 23 | 27.146 | 23.093 | 35.695 | 26.733 | 1'52.667 | 257,8 | 16:29'47.311 |
| 24 | 27.129 | 23.068 | 35.930 | 26.733 | 1'52.860 | 260,2 | 16:31'40.171 |

51 P. GNEMMI (1'51.637)

| Giro | Seg.1 | Seg.2 | Seg.3 | Seg.4 | T. Giro | km/h | Local Time |
|------|---------------|---------------|---------------|---------------|-----------------|--------------|--------------|
| | | 30.849 | 42.767 | 29.603 | | 92,5 | 15:32'33.846 |
| 1 | 29.715 | 25.741 | 43.384 | 49.679 | 2'28.519P | 238,4 | 15:35'02.365 |
| 2 | 47.793 | 25.530 | 41.650 | 31.248 | 2'26.221P | 147,7 | 15:37'28.586 |
| 3 | 28.401 | 24.072 | 36.750 | 27.567 | 1'56.790 | 255,3 | 15:39'25.376 |
| 4 | 29.056 | 24.106 | 36.854 | 27.344 | 1'57.360 | 259,0 | 15:41'22.736 |
| 5 | 27.711 | 23.788 | 36.508 | 28.175 | 1'56.182C | 260,2 | 15:43'18.918 |
| 6 | 27.628 | 23.445 | 36.665 | 27.306 | 1'55.044 | 259,0 | 15:45'13.962 |
| 7 | 28.645 | | | 6'01.602P | 259,0 | 15:51'15.564 | |
| 8 | 39.262 | 27.301 | 44.095 | 29.274 | 2'19.932P | 159,8 | 15:53'35.496 |
| 9 | 28.703 | 24.574 | 37.762 | 27.750 | 1'58.789 | 257,8 | 15:55'34.285 |
| 10 | 27.732 | 24.970 | 37.851 | 27.236 | 1'57.789 | 259,0 | 15:57'32.074 |
| 11 | 27.542 | 23.443 | 36.436 | 27.043 | 1'54.464 | 260,2 | 15:59'26.538 |
| 12 | 27.449 | 23.362 | 36.081 | 27.042 | 1'53.934 | 260,2 | 16:01'20.472 |
| 13 | 37.161 | | | 5'39.648P | 216,0 | 16:07'00.120 | |
| 14 | 35.443 | 24.119 | 38.038 | 28.066 | 2'05.666P | 170,1 | 16:09'05.786 |
| 15 | 27.985 | 23.900 | 36.682 | 27.472 | 1'56.039 | 259,0 | 16:11'01.825 |
| 16 | 27.651 | 23.593 | 36.522 | 27.246 | 1'55.012 | 261,5 | 16:12'56.837 |
| 17 | 30.298 | | | 5'32.763P | 215,1 | 16:18'29.600 | |
| 18 | 43.624 | 28.426 | 40.744 | 31.666 | 2'24.460P | 90,1 | 16:20'54.060 |
| 19 | 29.024 | 23.871 | 39.362 | 27.347 | 1'59.604 | 243,8 | 16:22'53.664 |
| 20 | 27.405 | 23.043 | 35.462 | 26.727 | 1'52.637 | 259,0 | 16:24'46.301 |
| 21 | 26.860 | 22.688 | 35.400 | 26.689 | 1'51.637 | 260,2 | 16:26'37.938 |

67 A. DE GIACOMI (1'52.773)

| Giro | Seg.1 | Seg.2 | Seg.3 | Seg.4 | T. Giro | km/h | Local Time |
|------|--------|---------------|---------------|---------------|-----------------|--------------|--------------|
| | | | | | | | 15:30'23.391 |
| 1 | 40.395 | 26.707 | 39.947 | 29.029 | 2'16.078P | 147,3 | 15:32'39.469 |
| 2 | 29.039 | 24.600 | 38.127 | 28.334 | 2'00.100 | 253,5 | 15:34'39.569 |
| 3 | 28.331 | | | | 3'05.177P | 256,5 | 15:37'44.746 |
| 4 | 36.181 | 25.602 | 39.206 | 28.406 | 2'09.395P | 166,2 | 15:39'54.141 |
| 5 | 29.356 | 23.858 | 36.852 | 27.440 | 1'57.506 | 254,7 | 15:41'51.647 |
| 6 | 27.641 | 23.394 | 36.216 | 27.196 | 1'54.447 | 258,4 | 15:43'46.094 |
| 7 | 27.456 | 23.219 | 36.625 | 27.252 | 1'54.552C | 259,0 | 15:45'40.646 |
| 8 | 27.459 | 23.269 | 36.382 | 27.034 | 1'54.144 | 257,8 | 15:47'34.790 |
| 9 | 27.407 | 23.124 | 36.087 | 27.048 | 1'53.666 | 257,8 | 15:49'28.456 |
| 10 | 27.620 | 23.345 | 37.095 | 4'14.700 | 5'42.760P | 256,5 | 15:55'11.216 |
| 11 | 36.163 | 23.470 | 36.244 | 27.165 | 2'03.042P | 163,4 | 15:57'14.258 |
| 12 | 27.619 | 23.216 | 36.120 | 27.970 | 1'54.925 | 259,0 | 15:59'09.183 |
| 13 | 28.855 | 25.392 | 36.404 | 7'15.261 | 8'45.912P | 258,4 | 16:07'55.095 |
| 14 | 36.892 | 25.745 | 39.301 | 28.437 | 2'10.375P | 162,4 | 16:10'05.470 |
| 15 | 28.998 | 23.871 | 36.328 | 27.320 | 1'56.517 | 256,5 | 16:12'01.987 |
| 16 | 27.540 | 22.718 | 35.909 | 27.024 | 1'53.191 | 258,4 | 16:13'55.178 |
| 17 | 27.232 | 22.822 | 35.708 | 27.011 | 1'52.773 | 259,0 | 16:15'47.951 |
| 18 | 27.201 | 22.907 | 36.788 | 2'56.269 | 4'23.165P | 257,8 | 16:20'11.116 |
| 19 | 47.112 | 26.401 | 38.864 | 30.184 | 2'22.561P | 145,7 | 16:22'33.677 |
| 20 | 27.545 | 23.224 | 35.905 | 26.937 | 1'53.611 | 255,9 | 16:24'27.288 |
| 21 | 27.330 | 23.049 | 37.388 | 28.594 | 1'56.361 | 259,0 | 16:26'23.649 |
| 22 | 27.412 | 23.155 | 36.898 | 27.143 | 1'54.608 | 259,0 | 16:28'18.257 |

52 A. DE AMICIS (1'51.917)

| Giro | Seg.1 | Seg.2 | Seg.3 | Seg.4 | T. Giro | km/h | Local Time |
|------|---------------|---------------|---------------|---------------|-----------------|--------------|--------------|
| | | | | | | | 15:39'22.687 |
| 1 | 44.101 | 27.538 | 40.233 | 29.197 | 2'21.069P | 101,6 | 15:41'43.756 |
| 2 | 28.591 | 25.417 | 36.996 | 27.321 | 1'58.325 | 251,2 | 15:43'42.081 |
| 3 | 27.321 | 23.023 | 36.517 | 1'16.494 | 2'43.355 | 259,0 | 15:46'25.436 |
| 4 | 28.475 | 23.902 | 37.066 | 27.236 | 1'56.679 | 246,6 | 15:48'22.115 |
| 5 | 27.473 | 23.363 | 36.938 | 27.008 | 1'54.782 | 255,3 | 15:50'16.897 |
| 6 | 27.550 | 23.735 | 36.775 | 26.992 | 1'55.052 | 257,8 | 15:52'11.949 |
| 7 | 27.440 | | | 5'27.394P | 261,5 | 15:57'39.343 | |
| 8 | 36.146 | 23.688 | 38.102 | 27.326 | 2'05.262P | 171,2 | 15:59'44.605 |
| 9 | 27.297 | 23.282 | 36.631 | 10'08.114 | 11'35.324P | 260,9 | 16:11'19.929 |
| 10 | 42.511 | 26.903 | 39.525 | 28.603 | 2'17.542P | 103,4 | 16:13'37.471 |
| 11 | 28.806 | 26.824 | 36.577 | 27.079 | 1'59.286 | 254,1 | 16:15'36.757 |
| 12 | 27.096 | 23.216 | 35.411 | 26.702 | 1'52.425 | 258,4 | 16:17'29.182 |
| 13 | 26.890 | 22.690 | 35.583 | 26.754 | 1'51.917 | 259,6 | 16:19'21.099 |
| 14 | 26.939 | 22.675 | 35.653 | 26.875 | 1'52.142 | 261,5 | 16:21'13.241 |
| 15 | 27.614 | | | 5'26.325P | 260,2 | 16:26'39.566 | |
| 16 | 35.910 | 23.396 | 36.418 | 27.020 | 2'02.744P | 170,9 | 16:28'42.310 |

80 L. MOWLE (1'54.707)

| Giro | Seg.1 | Seg.2 | Seg.3 | Seg.4 | T. Giro | km/h | Local Time |
|------|---------------|---------------|---------------|---------------|-----------------|--------------|--------------|
| | | | | | | | 15:30'18.989 |
| 1 | 40.210 | 26.887 | 41.100 | 28.908 | 2'17.105P | 148,1 | 15:32'36.094 |
| 2 | 29.414 | 25.761 | 39.521 | 29.090 | 2'03.786 | 248,3 | 15:34'39.880 |
| 3 | 28.774 | 24.871 | 37.765 | 27.663 | 1'59.073 | 248,8 | 15:36'38.953 |
| 4 | 28.131 | 24.011 | 37.171 | 27.458 | 1'56.771 | 254,1 | 15:38'35.724 |
| 5 | 28.163 | 23.886 | 37.023 | 27.944 | 1'57.016 | 255,3 | 15:40'32.740 |
| 6 | 27.891 | 24.034 | 37.137 | 27.710 | 1'56.772 | 254,7 | 15:42'29.512 |
| 7 | 27.665 | 23.719 | 36.870 | 27.789 | 1'56.043 | 257,1 | 15:44'25.555 |
| 8 | 27.809 | 23.627 | 37.244 | 6'15.769 | 7'44.449P | 255,9 | 15:52'10.004 |
| 9 | 37.375 | 24.847 | 37.413 | 27.649 | 2'07.284P | 169,0 | 15:54'17.288 |
| 10 | 27.709 | 23.587 | 36.744 | 27.252 | 1'55.292 | 257,1 | 15:56'12.580 |
| 11 | 27.646 | 23.604 | 37.432 | 27.332 | 1'56.014 | 255,9 | 15:58'08.594 |
| 12 | 27.774 | 23.674 | 36.811 | 27.006 | 1'55.265 | 255,3 | 16:00'03.859 |
| 13 | 27.816 | 23.623 | 46.024 | 10'13.267 | 11'50.730P | 257,1 | 16:11'54.589 |
| 14 | 55.105 | 25.875 | 39.464 | 28.744 | 2'29.188P | 163,4 | 16:14'23.777 |
| 15 | 28.479 | 23.941 | 36.629 | 27.069 | 1'56.118 | 238,9 | 16:16'19.895 |
| 16 | 27.651 | 23.494 | 36.523 | 27.039 | 1'54.707 | 254,7 | 16:18'14.602 |
| 17 | 27.745 | | | 4'49.538P | 255,9 | 16:23'04.140 | |
| 18 | 39.431 | 26.306 | 39.678 | 27.938 | 2'13.353P | 163,4 | 16:25'17.493 |
| 19 | 27.773 | 23.526 | 36.693 | 27.914 | 1'55.906 | 255,9 | 16:27'13.399 |
| 20 | 27.641 | 23.623 | 36.752 | 27.344 | 1'55.360 | 255,3 | 16:29'08.759 |
| 21 | 27.677 | 23.583 | 36.684 | 27.255 | 1'55.199 | 256,5 | 16:31'03.958 |

54 S. STEFANELLI (1'52.139)

| Giro | Seg.1 | Seg.2 | Seg.3 | Seg.4 | T. Giro | km/h | Local Time |
|------|--------|--------|--------|-----------|------------|--------------|--------------|
| | | | | | | | 15:30'42.652 |
| 1 | 42.343 | 29.047 | 42.858 | 31.041 | 2'25.289P | 144,0 | 15:33'07.941 |
| 2 | 29.732 | 25.767 | 39.424 | 28.173 | 2'03.096 | 246,0 | 15:35'11.037 |
| 3 | 28.333 | 23.786 | 36.507 | 26.998 | 1'55.624 | 255,9 | 15:37'06.661 |
| 4 | 27.853 | 23.522 | 36.396 | 27.843 | 1'55.614C | 259,0 | 15:39'02.275 |
| 5 | 30.278 | 27.184 | 38.938 | 29.196 | 2'05.596 | 225,5 | 15:41'07.871 |
| 6 | 27.963 | 23.517 | 36.509 | 27.027 | 1'55.016 | 259,0 | 15:43'02.887 |
| 7 | 27.447 | 23.269 | 36.274 | 26.993 | 1'53.983C | 259,0 | 15:44'56.870 |
| 8 | 27.483 | 23.388 | 36.301 | 26.993 | 1'54.165 | 257,8 | 15:46'51.035 |
| 9 | 29.852 | | | 5'48.199P | 255,9 | 15:52'39.234 | |
| 10 | 38.837 | 24.833 | 38.204 | 27.895 | 2'09.769CP | 162,9 | 15:54'49.003 |
| 11 | 28.389 | 27.065 | 37.091 | 27.267 | 1'59.812C | 257,1 | 15:56'48.815 |
| 12 | 27.441 | 26.928 | 39.330 | 27.893 | 2'01.592 | 258,4 | 15:58'50.407 |

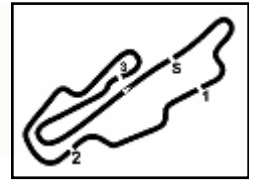
88 A. GIRONDI (1'52.819)

| Giro | Seg.1 | Seg.2 | Seg.3 | Seg.4 | T. Giro | km/h | Local Time |
|------|-------|-------|-------|-------|---------|------|--------------|
| | | | | | | | 15:30'25.054 |

PORSCHE

CARRERA CUP
ITALIA

ACI Racing Weekend Mugello, 12-13 Luglio 2025
Porsche Carrera Cup Italia - Analisi Tempi Prove Libere

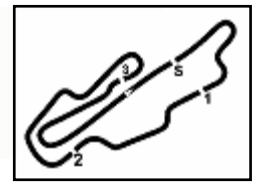


Aut.Int. Mugello 5.245 m

7/7

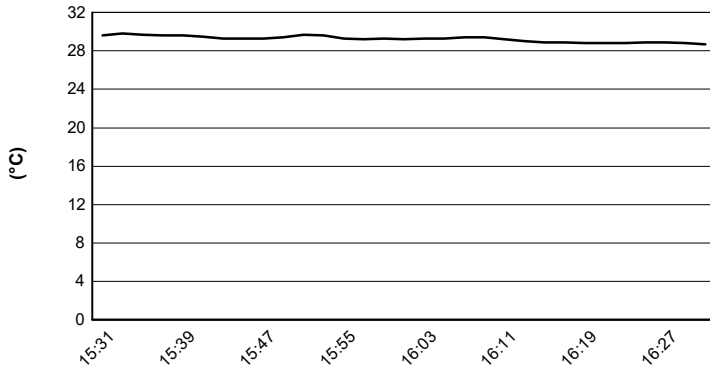
| | | | | | | | |
|----|---------------|---------------|---------------|---------------|-----------------|--------------|--------------|
| 1 | 41.541 | 28.422 | 46.101 | 31.376 | 2'27.440P | 129,3 | 15:32'52.494 |
| 2 | 31.069 | 27.252 | 39.267 | 27.771 | 2'05.359 | 228,8 | 15:34'57.853 |
| 3 | 28.172 | 24.042 | 36.562 | 27.040 | 1'55.816 | 256,5 | 15:36'53.669 |
| 4 | 27.441 | 23.688 | 36.271 | 27.217 | 1'54.617 | 257,8 | 15:38'48.286 |
| 5 | 27.612 | 23.337 | 35.947 | 26.851 | 1'53.747C | 257,8 | 15:40'42.033 |
| 6 | 27.979 | 23.911 | 36.059 | 27.049 | 1'54.998C | 259,0 | 15:42'37.031 |
| 7 | 27.509 | 23.301 | 35.902 | 27.021 | 1'53.733 | 259,0 | 15:44'30.764 |
| 8 | 27.276 | 23.654 | 35.761 | 27.047 | 1'53.738 | 259,0 | 15:46'24.502 |
| 9 | 27.512 | 23.587 | 35.888 | 27.069 | 1'54.056 | 257,8 | 15:48'18.558 |
| 10 | 27.531 | 23.268 | 35.827 | 26.956 | 1'53.582 | 256,5 | 15:50'12.140 |
| 11 | 27.379 | 23.269 | 36.194 | 27.040 | 1'53.882 | 259,0 | 15:52'06.022 |
| 12 | 27.571 | 23.487 | 36.034 | 26.992 | 1'54.084 | 262,8 | 15:54'00.106 |
| 13 | 27.542 | 23.460 | 36.233 | 27.027 | 1'54.262 | 262,8 | 15:55'54.368 |
| 14 | 35.994 | | | | 18'36.505P | 260,2 | 16:14'30.873 |
| 15 | 38.874 | 33.265 | 39.920 | 28.096 | 2'20.155P | 138,8 | 16:16'51.028 |
| 16 | 27.454 | 23.426 | 36.894 | 27.012 | 1'54.786 | 254,7 | 16:18'45.814 |
| 17 | 27.412 | 23.411 | 35.710 | 26.755 | 1'53.288 | 257,1 | 16:20'39.102 |
| 18 | 27.203 | 23.154 | 36.070 | 26.928 | 1'53.355 | 257,8 | 16:22'32.457 |
| 19 | 27.290 | 23.267 | 35.913 | 27.034 | 1'53.504 | 257,8 | 16:24'25.961 |
| 20 | 27.244 | 23.070 | 35.725 | 26.919 | 1'52.958 | 257,8 | 16:26'18.919 |
| 21 | 27.297 | 23.199 | 35.801 | 26.907 | 1'53.204 | 259,0 | 16:28'12.123 |
| 22 | 27.273 | 23.055 | 35.665 | 26.826 | 1'52.819 | 258,4 | 16:30'04.942 |



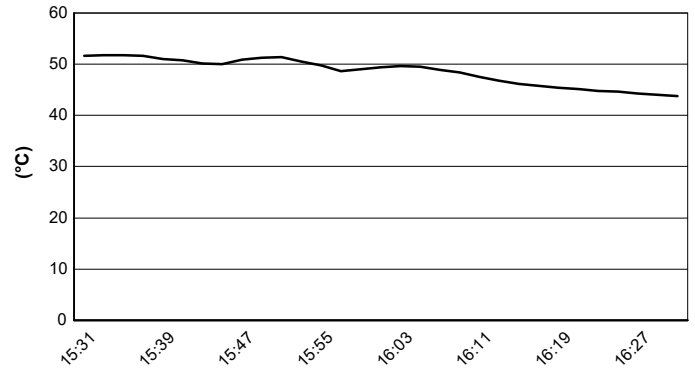


Aut.Int. Mugello 5.245 m

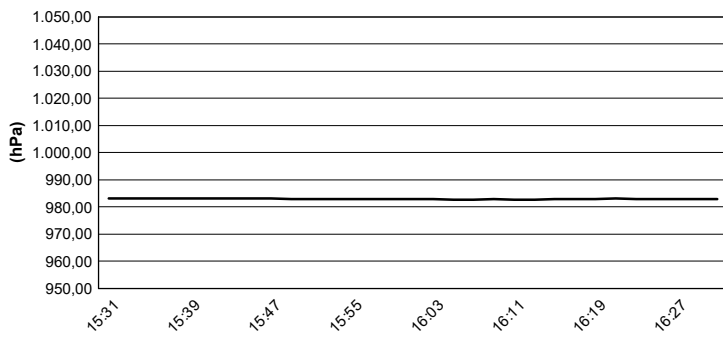
Air Temperature



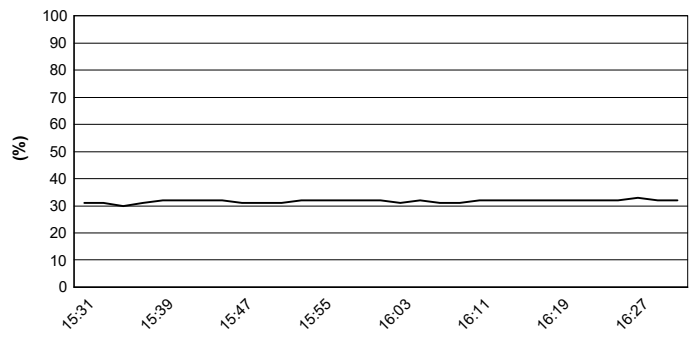
Track Temperature



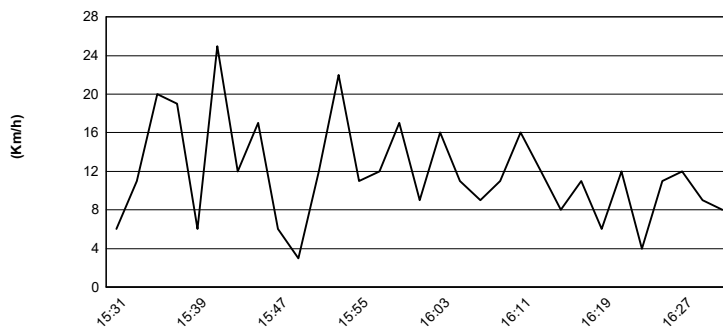
Air Pressure



Humidity



Wind Speed



Wind Direction

