

ACI Racing Weekend Imola, 1-2 Giugno 2024
Porsche Carrera Cup Italia - Classifica Qualifiche

Num.	Conduttore	Naz	Concorrente	Team	Auto	Classe	Tempo	Dist.	Rel.	Giri
1	1 TEN VOORDE Larry	NLD	Enrico Fulgenzi Racing	Enrico Fulgenzi Racing	Porsche 911 GT3 CUP 992		1'43.255			14
2	8 MASTERS Keagan	ZAF	Ombra Racing	Team Q8 Hi-Perform	Porsche 911 GT3 CUP 992		1'43.566	0.311	0.311	15
3	26 KLEIN Marvin	FRA	Target Competition	Target Competition	Porsche 911 GT3 CUP 992		1'43.718	0.463	0.152	13
4	21 BERTONELLI Diego	ITA	The Driving Experiences	The Driving Experiences	Porsche 911 GT3 CUP 992		1'43.990	0.735	0.272	12
5	12 ZENDELI Lirim	DEU	Ombra Racing	Ombra Racing	Porsche 911 GT3 CUP 992	R	1'43.995	0.740	0.005	16
6	32 QUARESMINI Gianmarco	ITA	Tsunami RT	Tsunami RT	Porsche 911 GT3 CUP 992		1'44.065	0.810	0.070	13
7	15 FESTANTE Aldo	ITA	Dinamic Motorsport	Dinamic Motorsport	Porsche 911 GT3 CUP 992		1'44.159	0.904	0.094	14
8	28 BRASCHI Francesco	ITA	Dinamic Motorsport	Dinamic Motorsport	Porsche 911 GT3 CUP 992	R	1'44.214	0.959	0.055	14
9	40 STIAK Janne	DEU	Target Competition	Target Competition	Porsche 911 GT3 CUP 992		1'44.284	1.029	0.070	13
10	10 ARMANNI Pietro	ITA	Prima Ghinzani Motorsport	Prima Ghinzani Motorsport	Porsche 911 GT3 CUP 992		1'44.417	1.162	0.133	14
11	46 PUJATTI Nicholas	ITA	Scuderia Villorba Corse	Scuderia Villorba Corse	Porsche 911 GT3 CUP 992	R	1'44.468	1.213	0.051	15
12	3 CERQUI Alberto	ITA	BeDriver	BeDriver	Porsche 911 GT3 CUP 992		1'44.617	1.362	0.149	16
13	25 GREGOR Daniel	DEU	The Driving Experiences	The Driving Experiences	Porsche 911 GT3 CUP 992	R	1'44.852	1.597	0.235	14
14	38 IAQUINTA Simone	ITA	Prima Ghinzani Motorsport	Prima Ghinzani Motorsport	Porsche 911 GT3 CUP 992		1'44.943	1.688	0.091	7
15	33 FELBERMAYR Horst Felix	AUT	The Driving Experiences	The Driving Experiences	Porsche 911 GT3 CUP 992		1'45.126	1.871	0.183	12
16	7 HALL Bayley	AUS	BeDriver	BeDriver	Porsche 911 GT3 CUP 992		1'45.199	1.944	0.073	20
17	11 GRAY Olivier	GBR	Ombra Racing	Ombra Racing	Porsche 911 GT3 CUP 992	R	1'45.212	1.957	0.013	16
18	14 GIACON Steven	ITA	Scuderia Villorba Corse	Scuderia Villorba Corse	Porsche 911 GT3 CUP 992	R	1'45.298	2.043	0.086	17
19	24 FANT Filippo	ITA	Team Malucelli	Team Malucelli	Porsche 911 GT3 CUP 992	R	1'45.447	2.192	0.149	19
20	44 OLIVIERI Flavio	ITA	Raptor Engineering	Raptor Engineering	Porsche 911 GT3 CUP 992	R	1'45.543	2.288	0.096	18
21	51 GNEMMI Paolo	ITA	Ebimotors	Ebimotors	Porsche 911 GT3 CUP 992	MC	1'45.588	2.333	0.045	16
22	70 GIORGI Gianluca	ITA	BeDriver	BeDriver	Porsche 911 GT3 CUP 992	MC	1'45.865	2.610	0.277	14
23	52 DE AMICIS Alberto	ITA	Ebimotors	Ebimotors	Porsche 911 GT3 CUP 992	MC	1'45.966	2.711	0.101	15
24	17 SCHURING Flynt	NLD	Enrico Fulgenzi Racing	Enrico Fulgenzi Racing	Porsche 911 GT3 CUP 992		1'46.165	2.910	0.199	9
25	67 DE GIACOMI Alex	ITA	Tsunami RT	Tsunami RT	Porsche 911 GT3 CUP 992	MC	1'46.172	2.917	0.007	15
26	2 NORDEN Sacha	NLD	Enrico Fulgenzi Racing	Enrico Fulgenzi Racing	Porsche 911 GT3 CUP 992		1'46.352	3.097	0.180	11
27	88 PASTORELLI Luca	ITA	Dinamic Motorsport	Dinamic Motorsport	Porsche 911 GT3 CUP 992	MC	1'46.452	3.197	0.100	19
28	56 BRUSA Cesare	ITA	Prima Ghinzani Motorsport	Prima Ghinzani Motorsport	Porsche 911 GT3 CUP 992	MC	1'46.497	3.242	0.045	18
29	50 FENICI Francesco Maria	ITA	Raptor Engineering	Raptor Engineering	Porsche 911 GT3 CUP 992	MC	1'46.614	3.359	0.117	17
30	69 MONTAGNESE Massimiliano	ITA	Team Malucelli	Team Malucelli	Porsche 911 GT3 CUP 992	MC	1'47.191	3.936	0.577	19
31	19 IMPERATO Anthony	USA	Ombra Racing	Ombra Racing	Porsche 911 GT3 CUP 992		1'47.363	4.108	0.172	16
32	55 INTRONA Ilarione	ITA	Prima Ghinzani Motorsport	Prima Ghinzani Motorsport	Porsche 911 GT3 CUP 992	MC	1'47.572	4.317	0.209	18
33	54 STEFANELLI Stefano	ITA	Team Malucelli	Team Malucelli	Porsche 911 GT3 CUP 992	MC				18

Tempo di Qualificazione: (110% di 1'43.513): **1'53.865**

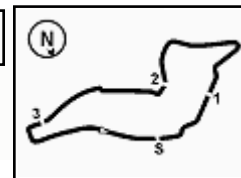
Umidità	44%	ARIA	24°C
Condizioni	DRY	Pista	32°C

Stewards : Ronny Guarini Franco Leoni Nicola Cadei

01/06/2024 Inizio 09:00 Fine 09:54

Esposta alle:





ACI Racing Weekend Imola, 1-2 Giugno 2024

Porsche Carrera Cup Italia - Classifica Qualifiche

Penalty and Infringment

09.06	44	F. OLIVIERI	Time Deleted (1'52.979) - Exceeded Track Limits - Turn 13
09.19	46	N. PUJATTI	Time Deleted (1'48.216) - Exceeded Track Limits - Turn 14
09.35	46	N. PUJATTI	Time Deleted (1'46.526) - Exceeded Track Limits - Turn 14
09.45	17	F. SCHURING	Time Deleted (1'49.525) - Exceeded Track Limits - Turn 14
09.49	46	N. PUJATTI	Time Deleted (1'48.103) - Exceeded Track Limits - Turn 14
09.52	46	N. PUJATTI	Time Deleted (1'45.653) - Exceeded Track Limits - Turn 14
11.54	54	S. STEFANELLI	All Times Deleted per decisione n. 2 dei CCSS

Fastest Laps Sequence

Num.	Concorrente	Naz	Team	Auto	Local Time	Tempo	Dist.	Media
10	P. ARMANNI	ITA	Prima Ghinzani Motorsport	Porsche 911 GT3 CUP 992	09:04'05.159	1'55.815		152,592
88	L. PASTORELLI	ITA	Dinamic Motorsport	Porsche 911 GT3 CUP 992	09:04'07.021	1'54.240	-1.575	154,695
10	P. ARMANNI	ITA	Prima Ghinzani Motorsport	Porsche 911 GT3 CUP 992	09:05'51.247	1'46.088	-8.152	166,582
38	S. IAQUINTA	ITA	Prima Ghinzani Motorsport	Porsche 911 GT3 CUP 992	09:16'53.023	1'44.943	-1.145	168,400
26	M. KLEIN	FRA	Target Competition	Porsche 911 GT3 CUP 992	09:19'27.709	1'44.773	-0.170	168,673
1	L. TEN VOORDE	NLD	Enrico Fulgenzi Racing	Porsche 911 GT3 CUP 992	09:20'02.732	1'44.318	-0.455	169,409
8	K. MASTERS	ZAF	Team Q8 Hi-Perform	Porsche 911 GT3 CUP 992	09:47'36.128	1'43.918	-0.400	170,061
1	L. TEN VOORDE	NLD	Enrico Fulgenzi Racing	Porsche 911 GT3 CUP 992	09:47'53.933	1'43.378	-0.540	170,949
1	L. TEN VOORDE	NLD	Enrico Fulgenzi Racing	Porsche 911 GT3 CUP 992	09:49'37.188	1'43.255	-0.123	171,153

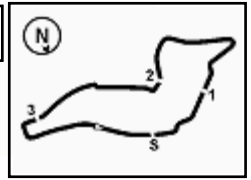
Stewards : Ronny Guarini Franco Leoni Nicola Cadei

01/06/2024 Inizio 09:00 Fine 09:54

Esposta alle:

Powered by FICr PERUGIA TIMING





MIGLIOR GIRO

1	1 TEN VOORDE Larry	Porsche 911 GT3 CUP 992	1'43.255
2	8 MASTERS Keagan	Porsche 911 GT3 CUP 992	1'43.566
3	26 KLEIN Marvin	Porsche 911 GT3 CUP 992	1'43.718
4	21 BERTONELLI Diego	Porsche 911 GT3 CUP 992	1'43.990
5	12 ZENDELI Lirim	Porsche 911 GT3 CUP 992	1'43.995
6	32 QUARESMINI Gianmarco	Porsche 911 GT3 CUP 992	1'44.065
7	15 FESTANTE Aldo	Porsche 911 GT3 CUP 992	1'44.159
8	28 BRASCHI Francesco	Porsche 911 GT3 CUP 992	1'44.214
9	40 STIAK Janne	Porsche 911 GT3 CUP 992	1'44.284
10	10 ARMANNI Pietro	Porsche 911 GT3 CUP 992	1'44.417
11	46 PUJATTI Nicholas	Porsche 911 GT3 CUP 992	1'44.468
12	3 CERQUI Alberto	Porsche 911 GT3 CUP 992	1'44.617
13	25 GREGOR Daniel	Porsche 911 GT3 CUP 992	1'44.852
14	38 IAQUINTA Simone	Porsche 911 GT3 CUP 992	1'44.943
15	33 FELBERMAYR Horst Felix	Porsche 911 GT3 CUP 992	1'45.126
16	7 HALL Bayley	Porsche 911 GT3 CUP 992	1'45.199
17	11 GRAY Olivier	Porsche 911 GT3 CUP 992	1'45.212
18	14 GIACON Steven	Porsche 911 GT3 CUP 992	1'45.298
19	24 FANT Filippo	Porsche 911 GT3 CUP 992	1'45.447
20	44 OLIVIERI Flavio	Porsche 911 GT3 CUP 992	1'45.543
21	51 GNEMMI Paolo	Porsche 911 GT3 CUP 992	1'45.588
22	70 GIORGI Gianluca	Porsche 911 GT3 CUP 992	1'45.865
23	52 DE AMICIS Alberto	Porsche 911 GT3 CUP 992	1'45.966
24	17 SCHURING Flynt	Porsche 911 GT3 CUP 992	1'46.165
25	67 DE GIACOMI Alex	Porsche 911 GT3 CUP 992	1'46.172
26	2 NORDEN Sacha	Porsche 911 GT3 CUP 992	1'46.352
27	88 PASTORELLI Luca	Porsche 911 GT3 CUP 992	1'46.452
28	56 BRUSA Cesare	Porsche 911 GT3 CUP 992	1'46.497
29	50 FENICI Francesco Maria	Porsche 911 GT3 CUP 992	1'46.614
30	69 MONTAGNESE Massimiliano	Porsche 911 GT3 CUP 992	1'47.191
31	19 IMPERATO Anthony	Porsche 911 GT3 CUP 992	1'47.363
32	55 INTRONA Ilarione	Porsche 911 GT3 CUP 992	1'47.572
33	54 STEFANELLI Stefano	Porsche 911 GT3 CUP 992	

SPEED

1	40 STIAK Janne	Porsche 911 GT3 CUP 992	270,0
2	51 GNEMMI Paolo	Porsche 911 GT3 CUP 992	270,0
3	26 KLEIN Marvin	Porsche 911 GT3 CUP 992	270,0
4	14 GIACON Steven	Porsche 911 GT3 CUP 992	269,3
5	44 OLIVIERI Flavio	Porsche 911 GT3 CUP 992	269,3
6	52 DE AMICIS Alberto	Porsche 911 GT3 CUP 992	269,3
7	7 HALL Bayley	Porsche 911 GT3 CUP 992	268,7
8	1 TEN VOORDE Larry	Porsche 911 GT3 CUP 992	268,7
9	70 GIORGI Gianluca	Porsche 911 GT3 CUP 992	268,0
10	56 BRUSA Cesare	Porsche 911 GT3 CUP 992	268,0
11	33 FELBERMAYR Horst Felix	Porsche 911 GT3 CUP 992	268,0
12	12 ZENDELI Lirim	Porsche 911 GT3 CUP 992	268,0
13	3 CERQUI Alberto	Porsche 911 GT3 CUP 992	268,0
14	10 ARMANNI Pietro	Porsche 911 GT3 CUP 992	268,0
15	88 PASTORELLI Luca	Porsche 911 GT3 CUP 992	267,3
16	8 MASTERS Keagan	Porsche 911 GT3 CUP 992	267,3
17	25 GREGOR Daniel	Porsche 911 GT3 CUP 992	267,3
18	21 BERTONELLI Diego	Porsche 911 GT3 CUP 992	267,3
19	15 FESTANTE Aldo	Porsche 911 GT3 CUP 992	266,7
20	19 IMPERATO Anthony	Porsche 911 GT3 CUP 992	266,7
21	28 BRASCHI Francesco	Porsche 911 GT3 CUP 992	266,7
22	32 QUARESMINI Gianmarco	Porsche 911 GT3 CUP 992	266,7
23	17 SCHURING Flynt	Porsche 911 GT3 CUP 992	266,0
24	55 INTRONA Ilarione	Porsche 911 GT3 CUP 992	266,0
25	54 STEFANELLI Stefano	Porsche 911 GT3 CUP 992	266,0
26	24 FANT Filippo	Porsche 911 GT3 CUP 992	266,0
27	11 GRAY Olivier	Porsche 911 GT3 CUP 992	266,0
28	38 IAQUINTA Simone	Porsche 911 GT3 CUP 992	266,0
29	2 NORDEN Sacha	Porsche 911 GT3 CUP 992	265,4
30	46 PUJATTI Nicholas	Porsche 911 GT3 CUP 992	265,4
31	69 MONTAGNESE Massimiliano	Porsche 911 GT3 CUP 992	265,4
32	50 FENICI Francesco Maria	Porsche 911 GT3 CUP 992	264,7
33	67 DE GIACOMI Alex	Porsche 911 GT3 CUP 992	257,1

SEG. 1

1	1 TEN VOORDE Larry	21.507
2	40 STIAK Janne	21.553
3	26 KLEIN Marvin	21.560
4	8 MASTERS Keagan	21.568
5	46 PUJATTI Nicholas	21.574
6	21 BERTONELLI Diego	21.588
7	32 QUARESMINI Gianmarco	21.614
8	10 ARMANNI Pietro	21.617
9	28 BRASCHI Francesco	21.632
10	12 ZENDELI Lirim	21.642
11	15 FESTANTE Aldo	21.665
12	25 GREGOR Daniel	21.671
13	38 IAQUINTA Simone	21.704
14	11 GRAY Olivier	21.716
15	3 CERQUI Alberto	21.720
16	7 HALL Bayley	21.724
17	14 GIACON Steven	21.776
18	33 FELBERMAYR Horst Feli	21.776
19	17 SCHURING Flynt	21.789
20	51 GNEMMI Paolo	21.815
21	24 FANT Filippo	21.889
22	19 IMPERATO Anthony	21.890
23	44 OLIVIERI Flavio	21.945
24	70 GIORGI Gianluca	21.951
25	52 DE AMICIS Alberto	22.062
26	54 STEFANELLI Stefano	22.085
27	50 FENICI Francesco Maria	22.088
28	69 MONTAGNESE Massimil	22.096
29	2 NORDEN Sacha	22.115
30	56 BRUSA Cesare	22.117
31	88 PASTORELLI Luca	22.151
32	67 DE GIACOMI Alex	22.165
33	55 INTRONA Ilarione	22.457

SEG. 2

1	1 TEN VOORDE Larry	33.922
2	8 MASTERS Keagan	34.033
3	21 BERTONELLI Diego	34.050
4	15 FESTANTE Aldo	34.100
5	26 KLEIN Marvin	34.110
6	40 STIAK Janne	34.162
7	12 ZENDELI Lirim	34.179
8	32 QUARESMINI Gianmarco	34.223
9	38 IAQUINTA Simone	34.257
10	10 ARMANNI Pietro	34.304
11	28 BRASCHI Francesco	34.390
12	33 FELBERMAYR Horst Feli	34.397
13	46 PUJATTI Nicholas	34.402
14	3 CERQUI Alberto	34.419
15	7 HALL Bayley	34.502
16	25 GREGOR Daniel	34.556
17	14 GIACON Steven	34.614
18	17 SCHURING Flynt	34.628
19	11 GRAY Olivier	34.645
20	19 IMPERATO Anthony	34.663
21	24 FANT Filippo	34.665
22	88 PASTORELLI Luca	34.680
23	67 DE GIACOMI Alex	34.694
24	51 GNEMMI Paolo	34.705
25	2 NORDEN Sacha	34.706
26	54 STEFANELLI Stefano	34.716
27	52 DE AMICIS Alberto	34.763
28	44 OLIVIERI Flavio	34.846
29	70 GIORGI Gianluca	34.854
30	56 BRUSA Cesare	35.038
31	50 FENICI Francesco Maria	35.132
32	69 MONTAGNESE Massimil	35.236
33	55 INTRONA Ilarione	35.253

SEG. 3

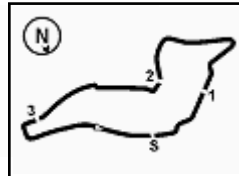
1	1 TEN VOORDE Larry	29.138
2	8 MASTERS Keagan	29.271
3	26 KLEIN Marvin	29.350
4	12 ZENDELI Lirim	29.449
5	32 QUARESMINI Gianmarco	29.473
6	28 BRASCHI Francesco	29.489
7	15 FESTANTE Aldo	29.502
8	21 BERTONELLI Diego	29.533
9	46 PUJATTI Nicholas	29.592
10	10 ARMANNI Pietro	29.609
11	25 GREGOR Daniel	29.622
12	3 CERQUI Alberto	29.696
13	7 HALL Bayley	29.719
14	44 OLIVIERI Flavio	29.740
15	33 FELBERMAYR Horst Feli	29.767
16	40 STIAK Janne	29.780
17	11 GRAY Olivier	29.822
18	14 GIACON Steven	29.865
19	38 IAQUINTA Simone	29.888
20	51 GNEMMI Paolo	29.937
21	54 STEFANELLI Stefano	29.982
22	24 FANT Filippo	30.012
23	67 DE GIACOMI Alex	30.030
24	70 GIORGI Gianluca	30.035
25	56 BRUSA Cesare	30.037
26	52 DE AMICIS Alberto	30.076
27	88 PASTORELLI Luca	30.205
28	50 FENICI Francesco Maria	30.223
29	2 NORDEN Sacha	30.342
30	55 INTRONA Ilarione	30.449
31	19 IMPERATO Anthony	30.491
32	17 SCHURING Flynt	30.568
33	69 MONTAGNESE Massimil	30.642

SEG. 4

1	1 TEN VOORDE Larry	18.501
2	26 KLEIN Marvin	18.506
3	8 MASTERS Keagan	18.537
4	21 BERTONELLI Diego	18.561
5	12 ZENDELI Lirim	18.568
6	15 FESTANTE Aldo	18.579
7	28 BRASCHI Francesco	18.607
8	3 CERQUI Alberto	18.624
9	40 STIAK Janne	18.625
10	7 HALL Bayley	18.631
11	32 QUARESMINI Gianmarco	18.654
12	33 FELBERMAYR Horst Feli	18.690
13	10 ARMANNI Pietro	18.702
14	11 GRAY Olivier	18.736
15	25 GREGOR Daniel	18.746
16	44 OLIVIERI Flavio	18.756
17	14 GIACON Steven	18.765
18	67 DE GIACOMI Alex	18.788
19	38 IAQUINTA Simone	18.790
20	46 PUJATTI Nicholas	18.790
21	52 DE AMICIS Alberto	18.791
22	17 SCHURING Flynt	18.799
23	51 GNEMMI Paolo	18.812
24	2 NORDEN Sacha	18.825
25	70 GIORGI Gianluca	18.830
26	50 FENICI Francesco Maria	18.849
27	24 FANT Filippo	18.850
28	88 PASTORELLI Luca	18.898
29	19 IMPERATO Anthony	18.932
30	56 BRUSA Cesare	18.957
31	55 INTRONA Ilarione	18.976
32	69 MONTAGNESE Massimil	18.997



**ACI Racing Weekend Imola, 1-2 Giugno 2024
Porsche Carrera Cup Italia - Ideal Time Qualifiche**



Imola Circuit 4.909 m
1 / 2

Num.	Conduuttore	Auto	Seg. 1	Seg. 2	Seg. 3	Seg. 4	Ideal Time		
			Diff. 1	Diff. 2	Diff. 3	Diff. 4	Miglior Giro	Pos.	Diff.
1	1 TEN VOORDE L. (NLD)	Porsche 911 GT3 CUP 992	21.507 +0.001	33.922 +0.073	29.138 +0.113	18.501	1'43.068 1'43.255	1	0.187
2	8 MASTERS K. (ZAF)	Porsche 911 GT3 CUP 992	21.568 +0.025	34.033 +0.132	29.271	18.537	1'43.409 1'43.566	2	0.157
3	26 KLEIN M. (FRA)	Porsche 911 GT3 CUP 992	21.560 +0.124	34.110 +0.068	29.350	18.506	1'43.526 1'43.718	3	0.192
4	21 BERTONELLI D. (ITA)	Porsche 911 GT3 CUP 992	21.588 +0.138	34.050	29.533 +0.120	18.561	1'43.732 1'43.990	4	0.258
5	12 ZENDELI L. (DEU)	Porsche 911 GT3 CUP 992	21.642 +0.034	34.179	29.449 +0.044	18.568 +0.079	1'43.838 1'43.995	5	0.157
6	15 FESTANTE A. (ITA)	Porsche 911 GT3 CUP 992	21.665 +0.050	34.100 +0.150	29.502	18.579 +0.113	1'43.846 1'44.159	7	0.313
7	32 QUARESMINI G. (ITA)	Porsche 911 GT3 CUP 992	21.614	34.223	29.473	18.654 +0.101	1'43.964 1'44.065	6	0.101
8	28 BRASCHI F. (ITA)	Porsche 911 GT3 CUP 992	21.632	34.390 +0.096	29.489	18.607	1'44.118 1'44.214	8	0.096
9	40 STIAK J. (DEU)	Porsche 911 GT3 CUP 992	21.553 +0.051	34.162	29.780 +0.034	18.625 +0.079	1'44.120 1'44.284	9	0.164
10	10 ARMANI P. (ITA)	Porsche 911 GT3 CUP 992	21.617 +0.166	34.304 +0.019	29.609	18.702	1'44.232 1'44.417	10	0.185
11	46 PUJATTI N. (ITA)	Porsche 911 GT3 CUP 992	21.574 +0.024	34.402 +0.086	29.592	18.790	1'44.358 1'44.468	11	0.110
12	3 CERQUI A. (ITA)	Porsche 911 GT3 CUP 992	21.720 +0.044	34.419	29.696 +0.114	18.624	1'44.459 1'44.617	12	0.158
13	7 HALL B. (AUS)	Porsche 911 GT3 CUP 992	21.724 +0.121	34.502	29.719 +0.502	18.631	1'44.576 1'45.199	16	0.623
14	25 GREGOR D. (DEU)	Porsche 911 GT3 CUP 992	21.671 +0.079	34.556 +0.011	29.622	18.746 +0.167	1'44.595 1'44.852	13	0.257
15	33 FELBERMAYR H. (AUT)	Porsche 911 GT3 CUP 992	21.776 +0.120	34.397 +0.141	29.767 +0.206	18.690 +0.029	1'44.630 1'45.126	15	0.496
16	38 IAQUINTA S. (ITA)	Porsche 911 GT3 CUP 992	21.704 +0.244	34.257 +0.060	29.888	18.790	1'44.639 1'44.943	14	0.304
17	11 GRAY O. (GBR)	Porsche 911 GT3 CUP 992	21.716	34.645 +0.057	29.822	18.736 +0.236	1'44.919 1'45.212	17	0.293
18	14 GIACON S. (ITA)	Porsche 911 GT3 CUP 992	21.776	34.614 +0.120	29.865 +0.158	18.765	1'45.020 1'45.298	18	0.278
19	51 GNEMMI P. (ITA)	Porsche 911 GT3 CUP 992	21.815	34.705 +0.319	29.937	18.812	1'45.269 1'45.588	21	0.319
20	44 OLIVIERI F. (ITA)	Porsche 911 GT3 CUP 992	21.945 +0.202	34.846	29.740	18.756 +0.054	1'45.287 1'45.543	20	0.256
21	24 FANT F. (ITA)	Porsche 911 GT3 CUP 992	21.889	34.665	30.012 +0.031	18.850	1'45.416 1'45.447	19	0.031
22	70 GIORGI G. (ITA)	Porsche 911 GT3 CUP 992	21.951 +0.144	34.854 +0.051	30.035	18.830	1'45.670 1'45.865	22	0.195
23	67 DE GIACOMI A. (ITA)	Porsche 911 GT3 CUP 992	22.165 +0.349	34.694	30.030 +0.009	18.788 +0.137	1'45.677 1'46.172	25	0.495
24	52 DE AMICIS A. (ITA)	Porsche 911 GT3 CUP 992	22.062	34.763 +0.136	30.076	18.791 +0.138	1'45.692 1'45.966	23	0.274
25	17 SCHURING F. (NLD)	Porsche 911 GT3 CUP 992	21.789 +0.332	34.628 +0.049	30.568	18.799	1'45.784 1'46.165	24	0.381
26	88 PASTORELLI L. (ITA)	Porsche 911 GT3 CUP 992	22.151 +0.057	34.680	30.205 +0.271	18.898 +0.190	1'45.934 1'46.452	27	0.518
27	19 IMPERATO A. (USA)	Porsche 911 GT3 CUP 992	21.890 +0.460	34.663 +0.927	30.491	18.932	1'45.976 1'47.363	31	1.387
28	2 NORDEN S. (NLD)	Porsche 911 GT3 CUP 992	22.115 +0.001	34.706	30.342 +0.363	18.825	1'45.988 1'46.352	26	0.364
29	56 BRUSA C. (ITA)	Porsche 911 GT3 CUP 992	22.117	35.038 +0.160	30.037 +0.129	18.957 +0.059	1'46.149 1'46.497	28	0.348
30	50 FENICI F. (ITA)	Porsche 911 GT3 CUP 992	22.088 +0.281	35.132	30.223	18.849 +0.041	1'46.292 1'46.614	29	0.322
31	69 MONTAGNESE M. (ITA)	Porsche 911 GT3 CUP 992	22.096 +0.105	35.236 +0.006	30.642 +0.109	18.997	1'46.971 1'47.191	30	0.220
32	55 INTRONA I. (ITA)	Porsche 911 GT3 CUP 992	22.457 +0.062	35.253 +0.375	30.449	18.976	1'47.135 1'47.572	32	0.437
	54 STEFANELLI S. (ITA)	Porsche 911 GT3 CUP 992							

01/06/2024

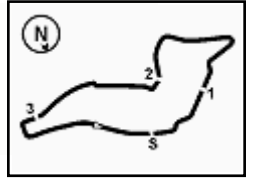
Powered by FICR PERUGIA TIMING



PORSCHE

CARRERA CUP
ITALIA

3.3



ACI Racing Weekend Imola, 1-2 Giugno 2024
Porsche Carrera Cup Italia - Ideal Time Qualifiche

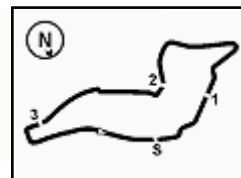
Imola Circuit 4.909 m
2 / 2

Num. Conduttore	Auto	Seg. 1 Diff. 1	Seg. 2 Diff. 2	Seg. 3 Diff. 3	Seg. 4 Diff. 4	Ideal Time Miglior Giro	Pos.	Diff.
		21.507	33.922	29.138	18.501	1'43.068		

Ideal Time Assoluto



ACI Racing Weekend Imola, 1-2 Giugno 2024
Porsche Carrera Cup Italia - Analisi Tempi Qualifiche



Imola Circuit 4.909 m

1 / 6

1 L. TEN VORDE (1'43.255)

Giro	Seg.1	Seg.2	Seg.3	Seg.4	T. Giro	km/h	Local Time
1							
2	44.295	41.817	34.045	20.113	2'20.270P	149,4	9:16'21.887
3	25.197	39.328	33.207	18.795	1'56.527	194,9	9:18'18.414
4	21.939	34.241	29.447	18.691	1'44.318	266,7	9:20'02.732
5	23.387	1'07.571	54.902	19.475	2'45.335	265,4	9:22'48.067
6	21.727	34.177	29.380	19.236	1'44.520	262,8	9:24'32.587
7	21.757	34.222	55.534	9'30.656	11'22.169P	267,3	9:35'54.756
8	43.611	40.887	34.393	19.356	2'18.247P	157,9	9:38'13.003
9	23.476	36.970	57.412	37.651	2'35.509	246,6	9:40'48.512
10	54.851	1'10.301	1'06.925	21.157	3'33.234	80,5	9:44'32.746
11	21.878	34.094	33.347	19.490	1'48.809	263,4	9:46'10.555
12	21.557	33.922	29.395	18.504	1'43.378	265,4	9:47'53.933
13	21.508	33.995	29.251	18.501	1'43.255	268,7	9:49'37.188
14	21.507	34.175	30.009	19.189	1'44.880	267,3	9:51'22.068
15	21.569	34.070	29.138	18.541	1'43.318	266,0	9:53'05.386

9	54.221	44.720	30.274	19.011	2'28.226	80,5	9:23'29.011
10	21.943	37.338	30.015	18.874	1'48.170	264,1	9:25'17.181
11	22.255	42.793	40.028	3'25.441	5'10.517P	259,6	9:30'27.698
12	2'18.252	41.107	35.173	20.518	3'55.050P	148,4	9:34'22.748
13	25.495	37.381	32.699	20.148	1'55.723	212,6	9:36'18.471
14	22.315	35.247	34.160	19.209	1'50.931	252,3	9:38'09.402
15	22.148	34.818	47.112	43.933	2'28.011	263,4	9:40'37.413
16	54.424	1'07.803	1'15.702	19.734	3'37.663	79,3	9:44'15.076
17	22.519	35.232	32.000	19.234	1'48.985	236,8	9:46'04.061
18	21.856	34.720	29.719	19.457	1'45.752	261,5	9:47'49.813
19	22.059	34.705	32.866	18.767	1'48.397	260,9	9:49'38.210
20	21.845	34.502	30.221	18.631	1'45.199	268,7	9:51'23.409
21	21.724	34.882	30.885	18.782	1'46.273	264,1	9:53'09.682

8 K. MASTERS (1'43.566)

Giro	Seg.1	Seg.2	Seg.3	Seg.4	T. Giro	km/h	Local Time
1							
2	46.932	55.831	46.663	46.047	3'15.473CP	155,8	9:09'57.326
3	3'45.388	39.790	35.554	21.672	5'22.404P	159,5	9:15'19.730
4	25.551	37.788	34.487	19.435	1'57.261	230,8	9:17'16.991
5	24.124	36.099	30.481	18.819	1'49.523	257,1	9:19'06.514
6	22.256	34.685	41.539	38.988	2'17.468	266,0	9:21'23.982
7	53.834	37.091	36.751	20.804	2'28.480	80,1	9:23'52.462
8	21.804	34.254	29.576	18.636	1'44.270C	265,4	9:25'36.732
9	38.275	53.098	54.339	6'57.996	9'23.708P	100,2	9:35'00.440
10	45.592	42.494	36.288	2'20.746	2'25.120P	142,5	9:37'25.560
11	26.222	39.820	34.560	21.190	2'01.792	243,8	9:39'27.352
12	54.939	1'22.714	1'54.971	27.142	4'39.766	78,9	9:44'07.118
13	22.060	34.634	29.635	18.763	1'45.092	262,1	9:45'52.210
14	21.808	34.147	29.410	18.553	1'43.918	264,7	9:47'36.128
15	21.568	34.033	29.426	18.543	1'43.570	266,7	9:49'19.698
16	21.593	34.165	29.271	18.537	1'43.566	266,0	9:51'03.264
17	21.571	34.152	31.414			267,3	

2 S. NORDEN (1'46.352)

Giro	Seg.1	Seg.2	Seg.3	Seg.4	T. Giro	km/h	Local Time
1							
2	46.668	42.595	34.341	19.815	2'23.419P	120,7	9:16'23.336
3	24.887	39.152	34.332	18.886	1'57.257	205,7	9:18'20.593
4	22.578	34.934	30.785	14'04.298	15'32.595P	264,7	9:33'53.188
5	47.518	40.699	38.677	20.417	2'27.311P	100,5	9:36'20.499
6	25.855	41.344	35.362	19.244	2'01.805	220,4	9:38'22.304
7	22.256	34.836	1'02.989	1'58.922	3'59.003P	262,1	9:42'21.307
8	58.650	48.122	34.991	23.916	2'45.679P	80,7	9:45'06.986
9	22.211	35.618	30.853	18.998	1'47.680	265,4	9:46'54.666
10	22.166	34.783	33.801	19.076	1'49.826	264,7	9:48'44.492
11	22.115	35.552	30.342	18.982	1'46.991	262,1	9:50'31.483
12	22.116	34.706	30.705	18.825	1'46.352	260,2	9:52'17.835

3 A. CERQUI (1'44.617)

Giro	Seg.1	Seg.2	Seg.3	Seg.4	T. Giro	km/h	Local Time
1							
2	45.087	48.079	43.472	57.906	3'14.544CP	157,9	9:10'16.718
3	3'28.628	38.778	35.180	21.708	5'04.294P	160,7	9:15'21.012
4	24.711	38.695	35.275	19.178	1'57.859	218,2	9:17'18.871
5	22.068	34.892	29.959	18.761	1'45.680	264,7	9:19'04.551
6	21.818	34.543	39.355	41.462	2'17.178	264,1	9:21'21.729
7	55.030	37.872	34.974	19.587	2'27.463	59,0	9:23'49.192
8	21.935	34.601	29.816	18.746	1'45.098C	266,0	9:25'34.290
9	24.000	40.066	41.102	8'41.130	10'26.298P	243,8	9:36'00.588
10	42.550	39.790	32.326	19.344	2'14.010P	164,9	9:38'14.598
11	23.061	36.578	58.179	37.672	2'35.490	232,3	9:40'50.088
12	54.764	1'10.899	1'10.103	23.376	3'39.142	79,5	9:44'29.230
13	22.450	35.625	32.993	20.563	1'51.631	246,0	9:46'20.861
14	21.888	34.535	29.844	18.734	1'45.001	264,1	9:48'05.862
15	21.764	34.419	29.810	18.624	1'44.617	265,4	9:49'50.479
16	21.991	38.925	30.930	18.771	1'50.617	268,0	9:51'41.096
17	21.720	34.439	29.696	18.855	1'44.710	264,1	9:53'25.806

10 P. ARMANNI (1'44.417)

Giro	Seg.1	Seg.2	Seg.3	Seg.4	T. Giro	km/h	Local Time
1							
2	39.321	33.186	20.549			156,1	
2	25.034	37.626	32.006	21.149	1'55.815	227,8	9:04'05.159
3	22.263	34.699	30.092	19.034	1'46.088	261,5	9:05'51.247
4	22.159	34.722	29.837	2'16.619	3'43.337CP	262,8	9:09'34.584
5	4'00.327	36.828	37.675	19.354	5'34.184P	173,6	9:15'08.768
6	22.006	34.904	29.804	18.822	1'45.536	264,1	9:16'54.304
7	21.735	37.467	32.565	19.060	1'50.827	266,0	9:18'45.131
8	21.883	34.388	30.164	2'47.508	4'13.943P	267,3	9:22'59.074
9	39.861	34.772	31.314	19.208	2'05.155P	185,2	9:25'04.229
10	22.079	36.854	38.542	16'20.768	17'58.243P	263,4	9:43'02.472
11	55.308	38.162	32.606	19.563	2'25.639P	81,1	9:45'28.111
12	22.526	36.146	31.237	20.691	1'50.600	258,4	9:47'18.711
13	21.783	34.323	29.609	18.702	1'44.417	264,7	9:49'03.128
14	21.801	34.499	30.112	18.793	1'45.205	267,3	9:50'48.333
15	21.617	34.304	30.353	21.264	1'47.538	268,0	9:52'35.871

7 B. HALL (1'45.199)

Giro	Seg.1	Seg.2	Seg.3	Seg.4	T. Giro	km/h	Local Time
1							
1	43.402	40.425	22.527			136,5	
2	27.552	37.875	33.477	19.706	1'58.610	190,8	9:04'24.574
3	24.532	35.999	32.125	19.927	1'52.583	217,7	9:06'17.157
4	22.195	35.305	36.742	1'57.260	3'31.502CP	260,2	9:09'48.659
5	3'48.143	41.451	38.916	20.276	5'28.786P	177,6	9:15'17.445
6	23.564	35.753	30.556	19.281	1'49.154	227,4	9:17'06.599
7	21.958	34.778	30.032	19.067	1'45.835	261,5	9:18'52.434
8	22.139	34.838	31.685	39.689	2'08.351	264,1	9:21'00.785

11 O. GRAY (1'45.212)

Giro	Seg.1	Seg.2	Seg.3	Seg.4	T. Giro	km/h	Local Time
1							
2	47.484	54.324	45.865	54.557	3'22.230CP	148,1	9:10'10.013
3	3'34.876	40.829	35.339	21.636	5'12.680P	163,4	9:15'22.693
4	25.048	38.109	35.145	19.468	1'57.770	201,1	9:17'20.463
5	23.714	36.201	32.182	19.222	1'51.319	233,3	9:19'11.782
6	22.413	35.253	47.744	37.835	2'23.245	254,7	9:21'35.027
7	48.115	36.542	42.937	23.931	2'31.525	78,4	9:24'06.552
8	22.250	34.927	38.371	8'29.168	10'04.716P	254,7	9:34'11.268
9	45.809	41.653	35.156	21.060	2'23.678P	154,1	9:36'34.946

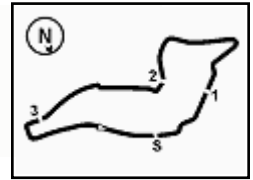
01/06/2024

P = Box In/Out - C = Tempo Invalidato



ACI Racing Weekend Imola, 1-2 Giugno 2024
Porsche Carrera Cup Italia - Analisi Tempi Qualifiche

3.4



Imola Circuit 4.909 m

2 / 6

10	25.491	38.428	33.871	19.467	1'57.257	200,7	9:38'32.203	12	22.017	34.380	29.630	18.579	1'44.606	266,0	9:47'44.028
11	23.354	46.738	1'22.453	48.039	3'20.584	224,5	9:41'52.787	13	21.665	34.288	29.612	18.668	1'44.233	265,4	9:49'28.261
12	55.816	1'05.475	31.949	21.151	2'54.391	77,3	9:44'47.178	14	21.715	34.250	29.502	18.692	1'44.159	266,0	9:51'12.420
13	22.389	35.531	31.146	19.270	1'48.336	246,0	9:46'35.514	15	21.699	34.100	29.825	18.767	1'44.391	266,7	9:52'56.811
14	22.022	34.676	30.553	18.736	1'45.987	257,1	9:48'21.501								
15	22.138	34.726	31.971	19.666	1'48.501	266,0	9:50'10.002								
16	21.914	34.645	29.982	18.801	1'45.342	261,5	9:51'55.344								
17	21.716	34.702	29.822	18.972	1'45.212	262,8	9:53'40.556								

12 L. ZENDELI (1'43.995)

Giro	Seg.1	Seg.2	Seg.3	Seg.4	T. Giro	km/h	Local Time
1							
2	48.973	44.821	42.528	43.172	2'59.494CP	143,6	9:08'24.851
3	5'08.850	41.073	38.336	21.076	6'49.335P	155,8	9:15'14.186
4	26.229	38.482	31.501	18.931	1'55.143	217,3	9:17'09.329
5	22.007	35.122	29.882	18.677	1'45.688	267,3	9:18'55.017
6	21.743	34.486	35.220	41.060	2'12.509	266,0	9:21'07.526
7	1'02.038	40.654	30.480	18.859	2'32.031	69,5	9:23'39.557
8	21.914	34.509	29.590	18.760	1'44.773	266,0	9:25'24.330
9	24.561	43.311	41.146	7'48.854	9'37.872P	267,3	9:35'02.202
10	46.496	43.793	39.039	20.047	2'29.375P	135,0	9:37'31.577
11	26.728	37.194	34.086	29.613	2'07.621	207,3	9:39'39.198
12	59.433	1'18.964	1'45.517	26.289	4'30.203	76,8	9:44'09.401
13	22.057	34.461	29.838	18.679	1'45.035	262,1	9:45'54.436
14	21.642	34.523	29.633	18.568	1'44.366	268,0	9:47'38.802
15	21.696	34.466	29.449	19.158	1'44.769	266,7	9:49'23.571
16	24.201	38.550	29.984	18.799	1'51.534	266,0	9:51'15.105
17	21.676	34.179	29.493	18.647	1'43.995	266,7	9:52'59.100

14 S. GIACON (1'45.298)

Giro	Seg.1	Seg.2	Seg.3	Seg.4	T. Giro	km/h	Local Time
1		48.022	44.925	23.448		104,2	
2	27.173	45.450	38.145	20.312	2'11.080	175,9	9:06'22.332
3	22.401	34.983	42.180	48.224	2'27.788CP	261,5	9:08'50.120
4	4'53.637	39.834	36.466	21.717	6'31.654P	150,8	9:15'21.774
5	24.801	40.038	35.235	19.177	1'59.251	200,0	9:17'21.025
6	22.466	34.859	30.441	18.971	1'46.737	260,9	9:19'07.762
7	22.029	34.614	42.780	39.758	2'19.181	265,4	9:21'26.943
8	52.464	36.526	37.395	21.084	2'27.469	80,2	9:23'54.412
9	22.051	35.129	5'52.011	52.985	7'42.176P	266,0	9:31'36.588
10	3'02.863	47.338	43.365	21.505	4'55.071P	113,1	9:36'31.659
11	26.730	39.700	40.128	23.856	2'10.414	189,8	9:38'42.073
12	22.370	53.109	1'11.071	47.362	3'13.912	264,1	9:41'55.985
13	55.066	1'04.382	32.842	23.517	2'55.807	80,4	9:44'51.792
14	22.109	34.830	30.404	19.788	1'47.131	264,1	9:46'38.923
15	21.860	34.838	30.287	18.928	1'45.913	265,4	9:48'24.836
16	22.076	34.815	30.020	18.816	1'45.727	266,7	9:50'10.563
17	22.064	34.654	29.865	18.811	1'45.394	265,4	9:51'55.957
18	21.776	34.734	30.023	18.765	1'45.298	269,3	9:53'41.255

15 A. FESTANTE (1'44.159)

Giro	Seg.1	Seg.2	Seg.3	Seg.4	T. Giro	km/h	Local Time
1							
2	46.544	42.432	35.783	20.898	2'25.657P	130,8	9:16'20.571
3	26.584	42.168	36.986	20.179	2'05.917	207,7	9:18'26.488
4	23.958	38.045	33.355	43.796	2'19.154P	233,8	9:20'45.642
5	1'25.799	41.561	31.338	19.058	2'57.756P	80,4	9:23'43.398
6	22.134	34.696	29.724	18.748	1'45.302	262,8	9:25'28.700
7	25.611	40.199	42.089	8'02.696	9'50.595P	199,6	9:35'19.295
8	41.529	42.469	34.862	20.093	2'18.953P	170,3	9:37'38.248
9	24.968	39.332	33.108	32.744	2'10.152	225,0	9:39'48.400
10	55.216	1'15.377	1'46.915	26.239	4'23.747	79,1	9:44'12.147
11	23.591	35.123	29.798	18.763	1'47.275	262,1	9:45'59.422

17 F. SCHURING (1'46.165)

Giro	Seg.1	Seg.2	Seg.3	Seg.4	T. Giro	km/h	Local Time
1							
2	47.226	42.284	34.324	19.845	2'23.679P	117,1	9:16'22.788
3	24.620	39.684	36.550	3'05.799	4'46.653P	201,5	9:21'09.441
4	1'05.360	41.673	39.249	22.757	2'49.039P	76,8	9:23'58.480
5	22.566	35.930	37.766	13'32.609	15'08.871P	244,9	9:39'07.351
6	1'01.467	1'10.107	1'44.572	53.740	4'49.886P	76,9	9:43'57.237
7	23.344	36.332	30.793	19.056	1'49.525C	246,6	9:45'46.762
8	22.121	34.677	30.568	18.799	1'46.165	263,4	9:47'32.927
9	21.789	34.628	37.070	18.957	1'52.444	266,0	9:49'25.371
10	21.819	34.671	36.120	19.092	1'51.702	265,4	9:51'17.073
11	21.945	34.906	49.063			257,1	

19 A. IMPERATO (1'47.363)

Giro	Seg.1	Seg.2	Seg.3	Seg.4	T. Giro	km/h	Local Time
1							
2	52.276	53.855	39.888	23.772	2'49.791P	96,8	9:04'03.007
3	27.374	42.043	36.120	19.975	2'05.512	191,2	9:06'08.519
4	23.729	36.307	35.678	47.762	2'23.476CP	227,8	9:08'31.995
5	5'03.596	41.152	38.128	21.554	6'44.430P	165,1	9:15'16.425
6	25.455	38.646	32.274	19.474	1'55.849	195,7	9:17'12.274
7	22.226	40.120	35.637	19.353	1'57.336	252,9	9:19'09.610
8	22.694	35.141	42.192	39.154	2'19.181	240,0	9:21'28.791
9	51.438	37.783	41.779	24.941	2'35.941	84,9	9:24'04.732
10	22.691	35.213	4'40.047	4'36.150	10'14.101P	258,4	9:34'18.833
11	45.997	45.586	34.767	19.736	2'26.086P	126,6	9:36'44.919
12	23.100	36.652	31.433	19.367	1'50.552	232,8	9:38'35.471
13	22.421	40.140	1'24.995	47.474	3'15.030	232,3	9:41'50.501
14	54.752	1'08.347	31.263	20.960	2'55.322	89,9	9:44'45.823
15	22.350	35.590	30.491	18.932	1'47.363	252,9	9:46'33.186
16	21.890	34.950	33.137	18.945	1'48.922	266,0	9:48'22.108
17	22.558	41.447	30.796	19.142	1'53.943	262,8	9:50'16.051
18	22.119	34.663	58.446			266,7	

21 D. BERTONELLI (1'43.990)

Giro	Seg.1	Seg.2	Seg.3	Seg.4	T. Giro	km/h	Local Time
1							
2	49.334	43.511	39.474	23.807	2'36.126P	156,1	9:16'46.171
3	26.658	39.698	37.713	19.016	2'03.085	201,1	9:18'49.256
4	22.054	34.706	30.047	1'51.348	3'18.155P	266,0	9:22'07.411
5	37.723	35.282	31.646	24.227	2'08.878P	180,6	9:24'16.289
6	22.169	34.363	38.036	11'11.407	12'45.975P	265,4	9:37'02.264
7	41.973	38.412	35.194	20.469	2'16.048P	174,5	9:39'18.312
8	43.564	1'14.267	1'45.076	54.145	4'37.052	112,0	9:43'55.364
9	22.964	34.544	30.076	19.075	1'46.659	246,0	9:45'42.023
10	22.016	34.372	29.706	18.646	1'44.740	265,4	9:47'26.763
11	21.726	34.050	29.653	18.561	1'43.990	264,7	9:49'10.753
12	21.862	34.321	29.548	18.761	1'44.492	267,3	9:50'55.245
13	21.588	34.298	29.533	18.737	1'44.156	266,7	9:52'39.401

24 F. FANT (1'45.447)

Giro	Seg.1	Seg.2	Seg.3	Seg.4	T. Giro	km/h	Local Time
1							
2	45.839	42.495	38.034	22.774	2'29.142P	149,6	9:03'09.717
3	26.076	37.505	32.128	19.695	1'55.404	204,2	9:05'05.121
4	23.433	36.393	31.482	19.274	1'50.582	250,0	9:06'55.703
5	22.621	39.985	34.897	4'56.017	6'33.520P	262,1	9:13'29.223

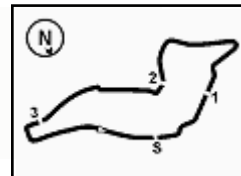
01/06/2024

P = Box In/Out - C = Tempo Invalidato

Powered by FICR PERUGIA TIMING



ACI Racing Weekend Imola, 1-2 Giugno 2024
Porsche Carrera Cup Italia - Analisi Tempi Qualifiche



Imola Circuit 4.909 m

6	39.982	38.656	38.641	21.333	2'18.612P	177,9	9:15'47.835	10	21.685	40.289	1'23.796	48.162	3'13.932	264,7	9:41'49.142
7	22.656	35.487	30.521	19.154	1'47.818	260,9	9:17'35.653	11	54.993	1'07.968	30.893	21.432	2'55.286	80,5	9:44'44.428
8	22.183	34.893	30.974	18.946	1'46.996	264,1	9:19'22.649	12	21.721	35.386	29.792	18.785	1'45.684	264,1	9:46'30.112
9	22.184	35.062	48.722	2'12.668	3'58.636P	266,0	9:23'21.285	13	21.632	34.486	29.489	18.607	1'44.214	266,0	9:48'14.326
10	37.646	35.909	31.773	19.113	2'04.441P	181,8	9:25'25.726	14	21.855	34.546	32.154	19.589	1'48.144	266,7	9:50'02.470
11	24.218	43.415	41.507	6'28.044	8'17.184P	259,6	9:33'42.910	15	25.537	35.242	30.728	20.193	1'51.700	266,0	9:51'54.170
12	41.845	38.930	37.314	22.347	2'20.436P	172,2	9:36'03.346	16	21.644	37.388	32.298			265,4	
13	24.106	35.787	30.592	19.176	1'49.661	230,3	9:37'53.007								
14	22.123	35.171	35.164	30.610	2'03.068	264,7	9:39'56.075								
15	57.060	1'10.318	1'53.970	25.599	4'26.947	81,5	9:44'23.022								
16	22.360	35.601	31.274	19.131	1'48.366	260,2	9:46'11.388								
17	21.889	34.665	30.043	18.850	1'45.447	264,7	9:47'56.835								
18	22.095	34.825	32.718	19.125	1'48.763	263,4	9:49'45.598								
19	22.081	34.700	30.012	18.901	1'45.694	262,1	9:51'31.292								
20	22.038	34.959	37.186	19.530	1'53.713	262,8	9:53'25.005								

32 G. QUARESMINI (1'44.065)

Giro	Seg.1	Seg.2	Seg.3	Seg.4	T. Giro	km/h	Local Time
1		41.560	38.742	20.557		174,5	
2	24.379	37.348	30.962	19.072	1'51.761	227,8	9:17'04.223
3	22.300	34.974	30.434	20.101	1'47.809	264,7	9:18'52.032
4	21.901	34.487	30.794	57.925	2'25.107P	266,7	9:21'17.139
5	1'56.740	35.312	35.636	19.103	3'26.791P	186,2	9:24'43.930
6	21.826	35.719	45.768	59.471	2'42.784CP	264,7	9:27'26.714
7	5'08.794	36.038	32.220	19.221	6'36.273P	170,6	9:34'02.987
8	22.081	34.520	29.899	18.754	1'45.254	262,8	9:35'48.241
9	22.059	34.965	31.107	38.881	2'07.012P	262,1	9:37'55.253
10	5'22.540	50.765	38.910	24.081	7'16.296P	82,4	9:45'11.549
11	24.167	36.317	30.147	18.788	1'49.419	236,8	9:47'00.968
12	21.905	34.575	29.544	18.654	1'44.678	263,4	9:48'45.646
13	21.614	34.223	29.473	18.755	1'44.065	265,4	9:50'29.711
14	21.773	34.368	29.573	18.692	1'44.406	264,7	9:52'14.117

33 H. FELBERMAYR (1'45.126)

Giro	Seg.1	Seg.2	Seg.3	Seg.4	T. Giro	km/h	Local Time
1							
2	43.808	43.169	34.430	19.928	2'21.335P	157,2	9:16'25.021
3	24.252	39.188	36.811	19.487	1'59.738	221,8	9:18'24.759
4	22.002	34.705	41.854	1'14.923	2'53.484P	263,4	9:21'18.243
5	59.930	37.226	37.345	20.807	2'35.308P	76,4	9:23'53.551
6	21.960	34.710	29.767	20.155	1'46.592C	263,4	9:25'40.143
7	49.536	1'07.613	1'00.492	7'38.069	10'35.710P	80,5	9:36'15.853
8	43.582	40.384	36.426	21.995	2'22.387P	153,4	9:38'38.240
9	23.811	45.760	1'18.815	47.585	3'15.971	237,9	9:41'54.211
10	55.503	1'04.817	41.633	21.361	3'03.314	78,3	9:44'57.525
11	22.020	34.397	30.117	18.746	1'45.280	263,4	9:46'42.805
12	21.807	34.544	30.094	18.690	1'45.135	266,0	9:48'27.940
13	21.896	34.538	29.973	18.719	1'45.126	266,0	9:50'13.066
14	21.776	35.182	31.024			266,7	

38 S. IAQUINTA (1'44.943)

Giro	Seg.1	Seg.2	Seg.3	Seg.4	T. Giro	km/h	Local Time
1		40.940	38.400	22.833		147,1	
2	27.302	37.389	31.484	19.332	1'55.507	202,6	9:04'20.064
3	22.237	39.611	34.086	19.578	1'55.512	264,7	9:06'15.576
4	21.847	34.434	33.427	51.478	2'21.186CP	263,4	9:08'36.762
5	4'57.114	37.191	37.793	19.220	6'31.318P	171,4	9:15'08.080
6	21.948	34.317	29.888	18.790	1'44.943	262,8	9:16'53.023
7	21.908	38.080	32.620	19.020	1'51.628	266,0	9:18'44.651
8	21.704	34.257	30.541	43.301	2'09.803P	266,0	9:20'54.454

40 J. STIAK (1'44.284)

Giro	Seg.1	Seg.2	Seg.3	Seg.4	T. Giro	km/h	Local Time
1							
2	3'15.793	39.571	34.053	24.328	4'53.745P	137,9	9:15'29.379
3	23.034	38.068	36.059	22.443	1'59.604	243,2	9:17'28.983
4	21.869	34.664	30.180	21.259	1'47.972	265,4	9:19'16.955
5	21.707	34.374	49.138	37.777	2'22.996	266,0	9:21'39.951
6	46.844	38.910	44.265	23.356	2'33.375	79,5	9:24'13.326
7	21.821	34.740	40.178	10'35.837	12'12.576P	266,0	9:36'25.902
8	44.933	37.496	34.725	21.160	2'18.314P	112,4	9:38'44.216

25 D. GREGOR (1'44.852)

Giro	Seg.1	Seg.2	Seg.3	Seg.4	T. Giro	km/h	Local Time
1							
2	46.812	46.183	40.150	25.407	2'38.552P	153,2	9:16'44.230
3	29.155	41.370	36.459	19.259	2'06.243	208,5	9:18'50.473
4	22.173	35.336	31.022	2'00.516	3'29.047P	264,1	9:22'19.520
5	37.627	36.861	36.727	24.761	2'15.976P	181,2	9:24'35.496
6	22.030	34.782	52.945	7'59.604	9'49.361P	263,4	9:34'24.857
7	43.317	41.608	36.327	22.511	2'23.763P	157,2	9:36'48.620
8	26.159	40.098	31.584	20.788	1'58.629	210,1	9:38'47.249
9	22.132	54.699	1'09.058	46.506	3'12.395	262,1	9:41'59.644
10	54.467	1'07.023	38.037	21.602	3'01.129	79,0	9:45'00.773
11	21.891	35.294	30.036	18.748	1'45.969	263,4	9:46'46.742
12	21.792	34.706	30.009	18.746	1'45.253	265,4	9:48'31.995
13	21.750	34.567	29.622	18.913	1'44.852	265,4	9:50'16.847
14	21.742	34.651	32.883	19.242	1'48.518	267,3	9:52'05.365
15	21.671	34.556	29.996	18.792	1'45.015	265,4	9:53'50.380

26 M. KLEIN (1'43.718)

Giro	Seg.1	Seg.2	Seg.3	Seg.4	T. Giro	km/h	Local Time
1							
2	52.446	39.442	33.799	20.173	2'25.860P	173,6	9:15'40.664
3	22.960	36.028	43.370	19.914	2'02.272	257,8	9:17'42.936
4	21.830	34.631	29.643	18.669	1'44.773	266,0	9:19'27.709
5	21.934	37.865	1'00.022	37.810	2'37.631	266,7	9:22'05.340
6	34.195	34.982	42.383	25.010	2'16.570	184,9	9:24'21.910
7	21.728	34.422	45.945	10'17.383	11'59.478P	264,7	9:36'21.388
8	43.764	39.174	36.479	20.526	2'19.943P	159,3	9:38'41.331
9	22.843	57.736	1'08.119	46.552	3'15.250	259,0	9:41'56.581
10	54.992	1'03.418	32.811	23.070	2'54.291	80,1	9:44'50.872
11	21.786	34.849	30.881	20.259	1'47.775	264,7	9:46'38.647
12	21.684	34.178	29.350	18.506	1'43.718	266,0	9:48'22.365
13	21.865	34.374	31.015	19.676	1'46.930	270,0	9:50'09.295
14	21.560	34.110	29.377	18.769	1'43.816	266,7	9:51'53.111
15	21.825	39.483	33.887			266,0	

28 F. BRASCHI (1'44.214)

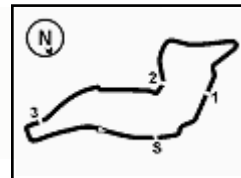
Giro	Seg.1	Seg.2	Seg.3	Seg.4	T. Giro	km/h	Local Time
1							
2	43.387	41.158	34.008	20.358	2'18.911P	132,8	9:16'15.423
3	24.479	36.980	32.267	19.128	1'52.854	245,5	9:18'08.277
4	22.420	34.999	30.834	19.091	1'47.344	259,0	9:19'55.621
5	21.806	1'00.049	1'03.658	19.166	2'44.679	263,4	9:22'40.300
6	21.918	34.482	30.012	25.337	1'51.749	260,9	9:24'32.049
7	21.744	34.390	46.852	8'08.004	9'50.990P	263,4	9:34'23.039
8	42.310	41.153	34.242	20.478	2'18.183P	157,9	9:36'41.222
9	24.896	37.423	32.103	19.566	1'53.988	225,9	9:38'35.210

01/06/2024

P = Box In/Out - C = Tempo Invalidato



ACI Racing Weekend Imola, 1-2 Giugno 2024
Porsche Carrera Cup Italia - Analisi Tempi Qualifiche



Imola Circuit 4.909 m

9	21.952	56.559	1'08.719	46.703	3'13.933	265,4	9:41'58.149	13	54.255	1'13.384	1'48.056	25.490	4'21.185	80,8	9:44'13.431
10	54.550	1'04.561	32.196	23.867	2'55.174	79,2	9:44'53.323	14	22.734	35.874	30.500	19.026	1'48.134	264,1	9:46'01.565
11	21.735	34.821	30.126	20.956	1'47.638	265,4	9:46'40.961	15	22.369	35.132	30.223	18.890	1'46.614	261,5	9:47'48.179
12	21.604	34.162	29.814	18.704	1'44.284	267,3	9:48'25.245	16	22.542	35.203	30.229	18.849	1'46.823	262,8	9:49'35.002
13	21.807	35.170	30.538	19.690	1'47.205	270,0	9:50'12.450	17	22.171	35.264	30.405	19.606	1'47.446	262,8	9:51'22.448
14	21.553	34.346	29.780	18.625	1'44.304	266,0	9:51'56.754	18	22.088	35.227	33.092	19.292	1'49.699	264,1	9:53'12.147
15	23.745	38.723	35.691			270,0									

44 F. OLIVIERI (1'45.543)							
Giro	Seg.1	Seg.2	Seg.3	Seg.4	T. Giro	km/h	Local Time
1		48.704	40.760	23.699		127,5	
2	29.015	40.296	32.912	19.871	2'02.094	194,6	9:04'46.132
3	22.888	35.983	34.972	19.136	1'52.979C	245,5	9:06'39.111
4	22.544	40.583	35.696	3'18.368	4'57.191CP	252,3	9:11'36.302
5	2'21.587	37.384	39.315	21.373	3'59.659P	177,3	9:15'35.961
6	26.256	41.270	40.455	19.870	2'07.851	258,4	9:17'43.812
7	22.461	35.154	30.241	18.767	1'46.623	264,7	9:19'30.435
8	22.174	37.748	1'04.578	45.003	2'49.503	263,4	9:22'19.938
9	30.602	35.934	31.070	21.380	1'58.986	198,9	9:24'18.924
10	22.198	35.367	40.256	50.119	2'27.940CP	264,1	9:26'46.864
11	5'41.468	35.518	30.091	19.090	7'06.167P	179,1	9:33'53.031
12	22.482	35.065	30.066	18.831	1'46.444	261,5	9:35'39.475
13	22.150	35.045	30.586	3'36.132	5'03.913P	264,1	9:40'43.388
14	1'05.800	1'13.453	1'07.095	29.561	3'55.909P	66,1	9:44'39.297
15	26.288	36.885	30.259	19.111	1'52.543	208,9	9:46'31.840
16	22.147	34.846	29.740	18.810	1'45.543	263,4	9:48'17.383
17	21.945	34.869	29.965	19.227	1'46.006	264,7	9:50'03.389
18	23.701	35.323	29.958	18.756	1'47.738	269,3	9:51'51.127
19	21.954	34.849	30.036	18.821	1'45.660	266,0	9:53'36.787

51 P. GNEMMI (1'45.588)							
Giro	Seg.1	Seg.2	Seg.3	Seg.4	T. Giro	km/h	Local Time
1							
2	49.679	41.767	34.391	19.960	2'25.797P	132,5	9:04'17.011
3	26.275	39.205	35.613	19.735	2'00.828	221,8	9:06'17.839
4	23.274	36.363	35.688	3'45.326	5'20.651CP	245,5	9:11'38.490
5	2'20.826	38.027	35.344	21.811	3'56.008P	180,9	9:15'34.498
6	22.812	35.401	35.046	25.853	1'59.112	252,3	9:17'33.610
7	22.082	34.953	30.462	18.938	1'46.435	266,7	9:19'20.045
8	26.582	37.406	58.551	2'23.818	4'26.357P	228,3	9:23'46.402
9	37.643	35.762	33.646	6'13.568	8'00.619P	183,7	9:31'47.021
10	1'05.716	38.745	33.583	19.740	2'37.784P	152,5	9:34'24.805
11	23.367	36.259	31.490	19.128	1'50.244	227,8	9:36'15.049
12	22.441	35.024	30.251	18.882	1'46.598	262,1	9:38'01.647
13	21.976	34.705	40.059	3'12.533	4'49.273P	266,0	9:42'50.920
14	1'01.225	36.206	33.928	21.440	2'32.799P	73,2	9:45'23.719
15	22.215	35.085	30.771	18.878	1'46.949	264,1	9:47'10.668
16	21.919	35.287	30.174	18.919	1'46.299	267,3	9:48'56.967
17	21.815	35.024	29.937	18.812	1'45.588	269,3	9:50'42.555
18	22.242	35.508	33.107			270,0	

46 N. PUJATTI (1'44.468)							
Giro	Seg.1	Seg.2	Seg.3	Seg.4	T. Giro	km/h	Local Time
1		48.864	43.501	42.296		C	146,3
2	5'48.364	45.555	41.400	24.541	7'39.860P	168,2	9:15'46.903
3	32.835	40.255	35.504	19.392	2'07.986	157,9	9:17'54.889
4	22.413	35.059	31.739	19.005	1'48.216C	260,2	9:19'43.105
5	22.052	46.992	1'00.373	30.883	2'40.300	264,1	9:22'23.405
6	24.304	35.809	40.401	24.428	2'04.942	227,8	9:24'28.347
7	21.880	34.634	45.308	54.184	2'36.006CP	264,1	9:27'04.353
8	5'24.949	35.936	30.965	20.102	6'51.952P	180,9	9:33'56.305
9	21.905	34.514	30.476	19.631	1'46.526C	260,2	9:35'42.831
10	21.878	34.714	30.501	38.830	2'05.923P	262,8	9:37'48.754
11	2'21.693	1'11.046	1'44.243	53.442	6'10.424P	78,3	9:43'59.178
12	27.274	42.776	45.581	19.305	2'14.936	178,2	9:46'14.114
13	22.224	34.968	30.903	19.493	1'47.588	258,4	9:48'01.702
14	21.882	35.089	29.922	21.210	1'48.103C	263,4	9:49'49.805
15	21.598	34.488	29.592	18.790	1'44.468	265,4	9:51'34.273
16	21.574	34.402	30.757	18.920	1'45.653C	264,1	9:53'19.926

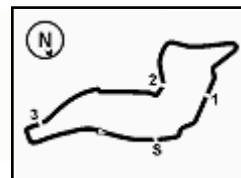
52 A. DE AMICIS (1'45.966)							
Giro	Seg.1	Seg.2	Seg.3	Seg.4	T. Giro	km/h	Local Time
1							
2	45.474	43.376	34.525	22.511	2'25.886P	166,7	9:04'06.486
3	23.810	37.461	35.518	19.513	1'56.302	238,9	9:06'02.788
4	23.203	36.449	33.880	3'23.127	4'56.659CP	257,1	9:10'59.447
5	2'54.519	37.377	34.769	26.195	4'32.860P	167,2	9:15'32.307
6	22.594	35.840	34.982	21.200	1'54.616	257,8	9:17'26.923
7	22.093	35.320	30.663	18.791	1'46.867	264,7	9:19'13.790
8	22.374	35.060	50.274	14'31.626	16'19.334P	266,0	9:35'33.124
9	47.619	47.556	35.491	19.790	2'30.456P	177,3	9:38'03.580
10	23.299	36.190	46.356	1'42.218	3'28.063P	257,8	9:41'31.643
11	1'03.319	1'08.570	34.229	19.556	3'05.674P	78,9	9:44'37.317
12	22.540	35.332	30.969	19.938	1'48.779	259,6	9:46'26.096
13	22.283	35.135	32.905	19.223	1'49.546	261,5	9:48'15.642
14	22.143	35.012	30.524	19.925	1'47.604	266,7	9:50'03.246
15	23.192	34.763	30.305	18.984	1'47.244	269,3	9:51'50.490
16	22.062	34.899	30.076	18.929	1'45.966	264,7	9:53'36.456

50 F. FENICI (1'46.614)							
Giro	Seg.1	Seg.2	Seg.3	Seg.4	T. Giro	km/h	Local Time
1		50.543	41.029	23.721		139,2	
2	29.313	44.655	36.320	7'21.784	9'12.072CP	197,4	9:11'55.099
3	2'12.916	44.329	38.348	20.498	3'56.091P	153,6	9:15'51.190
4	25.800	37.770	32.353	19.647	1'55.570	197,8	9:17'46.760
5	22.972	36.070	31.557	19.228	1'49.827	248,3	9:19'36.587
6	22.729	49.679	1'00.400	32.648	2'45.456	255,3	9:22'22.043
7	24.583	36.050	30.939	24.441	1'56.013	221,3	9:24'18.056
8	22.537	35.448	39.784	3'28.938	5'06.707CP	260,2	9:29'24.763
9	3'11.215	39.019	33.446	21.952	4'45.632P	162,7	9:34'10.395
10	22.999	35.778	31.829	19.652	1'50.258	249,4	9:36'00.653
11	22.459	35.477	30.631	18.957	1'47.524	262,1	9:37'48.177
12	22.098	35.181	30.807	35.983	2'04.069	264,7	9:39'52.246

54 S. STEFANELLI							
Giro	Seg.1	Seg.2	Seg.3	Seg.4	T. Giro	km/h	Local Time
1						C	
2	47.138	45.347	39.674	21.577	2'33.736CP	150,2	9:03'20.944
3	25.039	38.565	32.705	20.283	1'56.592C	217,7	9:05'17.536
4	24.226	36.992	31.240	19.378	1'51.836C	225,5	9:07'09.372
5	25.061	53.041	45.312	4'49.815	6'53.229CP	252,9	9:14'02.601
6	44.765	44.053	34.911	20.187	2'23.916CP	163,4	9:16'26.517
7	25.394	38.574	37.188	19.714	2'00.870C	195,7	9:18'27.387
8	22.693	35.206	30.348	19.106	1'47.353C	260,2	9:20'14.740
9	24.670	1'01.306	50.219	19.672	2'35.867C	262,1	9:22'50.607
10	22.580	35.291	30.170	19.168	1'47.209C	260,2	9:24'37.816
11	22.207	35.054	51.154	9'39.708	11'28.123CP	262,1	9:36'05.939
12	41.845	37.341	32.926	19.226	2'11.338CP	126,6	9:38'17.277
13	22.337	37.979	56.799	36.548	2'33.663C	261,5	9:40'50.940
14	55.491	1'10.457	1'09.819	23.368	3'39.135C	80,8	9:44'30.075



ACI Racing Weekend Imola, 1-2 Giugno 2024
Porsche Carrera Cup Italia - Analisi Tempi Qualifiche



Imola Circuit 4.909 m

15	23.237	35.290	35.758	21.317	1'55.602C	262,8	9:46'25.677	12	22.321	34.872	30.030	18.963	1'46.186	257,1	9:37'43.494
16	22.300	35.184	29.982	19.329	1'46.795C	263,4	9:48'12.472	13	22.285	35.014	5'34.681	42.314	7'14.294P	252,9	9:44'57.788
17	22.428	34.973	30.651	18.917	1'46.969C	263,4	9:49'59.441	14	2'23.701	39.267	32.538	19.537	3'55.043P	171,7	9:48'52.831
18	22.352	35.054	30.276	18.976	1'46.658C	266,0	9:51'46.099	15	22.652	35.004	30.292	29.964	1'57.912	243,2	9:50'50.743
19	22.085	34.716	30.317	19.048	1'46.166C	263,4	9:53'32.265	16	22.514	34.694	30.039	18.925	1'46.172	250,0	9:52'36.915

55 I. INTRONA (1'47.572)							
Giro	Seg.1	Seg.2	Seg.3	Seg.4	T. Giro	km/h	Local Time
1		47.743	40.576	23.016		130,0	
2	29.434	42.950	36.705	22.033	2'11.122	185,9	9:04'56.396
3	24.414	38.091	32.225	19.664	1'54.394	221,3	9:06'50.790
4	22.797	40.619	33.927	2'05.748	3'43.091CP	262,8	9:10'33.881
5	3'14.215	39.783	35.855	26.937	4'56.790P	151,5	9:15'30.671
6	24.715	40.248	34.539	25.640	2'05.142	228,8	9:17'35.813
7	23.868	36.631	31.055	19.171	1'50.725	233,8	9:19'26.538
8	22.904	38.734	1'01.970	44.634	2'48.242	255,3	9:22'14.780
9	35.955	37.146	31.593	25.352	2'10.046	149,4	9:24'24.826
10	22.687	35.536	45.152	3'34.958	5'18.333CP	265,4	9:29'43.159
11	2'59.725	42.122	38.846	22.187	4'42.880P	140,3	9:34'26.039
12	25.198	38.547	35.429	19.825	1'58.999	200,0	9:36'25.038
13	23.708	37.777	34.571	19.761	1'55.817	228,3	9:38'20.855
14	22.673	35.253	57.802	36.317	2'32.045	257,8	9:40'52.900
15	57.835	1'15.827	1'11.011	21.908	3'46.581	69,5	9:44'39.481
16	22.828	1'11.877	32.604	19.546	2'26.855	261,5	9:47'06.336
17	22.519	35.628	30.449	18.976	1'47.572	264,1	9:48'53.908
18	22.565	35.458	30.638	19.027	1'47.688	266,0	9:50'41.596
19	22.457	35.427	30.924	19.525	1'48.333	265,4	9:52'29.929

69 M. MONTAGNESE (1'47.191)							
Giro	Seg.1	Seg.2	Seg.3	Seg.4	T. Giro	km/h	Local Time
1							
2	44.883	43.940	35.123	21.041	2'24.987P	161,9	9:02'56.078
3	24.722	39.069	34.978	20.450	1'59.219	223,6	9:04'55.297
4	23.719	37.814	31.872	19.384	1'52.789	247,7	9:06'48.086
5	22.844	38.884	31.844	4'58.185	6'31.757P	262,1	9:13'19.843
6	48.263	38.938	34.383	19.843	2'21.427P	174,5	9:15'41.270
7	23.002	36.285	31.471	19.908	1'50.666	251,7	9:17'31.936
8	22.334	35.738	30.642	19.230	1'47.944	264,1	9:19'19.880
9	22.466	35.436	49.116	2'53.571	4'40.589P	265,4	9:27'00.469
10	38.350	36.270	50.079	5'27.237	7'31.936P	181,5	9:31'32.405
11	1'12.076	36.123	31.044	19.400	2'38.643P	156,1	9:34'11.048
12	22.867	35.827	31.697	19.575	1'49.966	252,9	9:36'01.014
13	22.515	35.978	30.856	19.182	1'48.531	259,0	9:37'49.545
14	22.096	35.236	31.648	35.903	2'04.883	264,7	9:39'54.428
15	56.609	1'10.751	1'48.775	25.116	4'21.251	74,6	9:44'15.679
16	23.319	36.236	30.835	19.022	1'49.412	243,2	9:46'05.091
17	22.201	35.242	30.751	18.997	1'47.191	263,4	9:47'52.282
18	22.293	36.999	30.822	19.278	1'49.392	262,8	9:49'41.674
19	22.362	35.682	30.646	19.105	1'47.795	265,4	9:51'29.469
20	22.839	37.225	33.295	19.593	1'52.952	261,5	9:53'22.421

56 C. BRUSA (1'46.497)							
Giro	Seg.1	Seg.2	Seg.3	Seg.4	T. Giro	km/h	Local Time
1		45.574	37.560	22.123		134,7	
2	26.467	41.743	35.662	20.669	2'04.541	206,1	9:04'36.686
3	24.656	37.725	31.600	19.551	1'53.532	220,4	9:06'30.218
4	23.912	49.832	35.639	2'48.267	4'37.650CP	264,7	9:11'07.868
5	2'48.629	38.492	35.641	25.169	4'27.931P	181,8	9:15'35.799
6	22.700	36.221	32.553	22.985	1'54.459	264,7	9:17'30.258
7	22.699	36.070	30.552	19.189	1'48.510	266,7	9:19'18.768
8	22.454	35.404	47.192	2'04.949	3'49.999P	268,0	9:23'08.767
9	38.916	36.567	30.983	19.603	2'06.069P	183,4	9:25'14.833
10	22.384	38.339	35.833	6'00.653	7'37.209P	264,7	9:32'52.045
11	44.531	42.696	36.256	20.698	2'24.181P	160,7	9:35'16.226
12	25.735	38.589	33.226	19.654	1'57.204	193,5	9:37'13.430
13	23.246	36.555	31.068	19.286	1'50.155	242,2	9:39'03.585
14	22.607	47.463	1'12.197	54.957	3'17.224	266,0	9:42'20.809
15	54.285	51.030	34.484	23.295	2'43.094	80,1	9:45'03.903
16	22.403	35.229	30.037	19.041	1'46.710	264,7	9:46'50.613
17	22.426	35.038	30.268	18.957	1'46.689	268,0	9:48'37.302
18	22.117	35.198	30.166	19.016	1'46.497	267,3	9:50'23.799
19	22.159	46.486	37.386	19.678	2'05.709	267,3	9:52'29.508

70 G. GIORGI (1'45.865)							
Giro	Seg.1	Seg.2	Seg.3	Seg.4	T. Giro	km/h	Local Time
1		46.488	41.456	22.515		124,7	
2	27.406	38.756	37.202	20.142	2'03.506	190,1	9:04'43.193
3	22.629	35.584	30.759	19.019	1'47.991	261,5	9:06'31.184
4		44.339	13'22.384	16'07.211P	260,2	9:22'38.395	
5	47.891	44.763	39.180	20.974	2'32.808P	145,0	9:25'11.203
6	26.738	42.349	38.738	5'28.237	7'16.062P	216,4	9:32'27.265
7	40.488	37.103	30.941	19.136	2'07.668P	170,6	9:34'34.933
8	22.620	35.254	31.080	19.118	1'48.072	259,6	9:36'23.005
9	23.052	37.468	32.644	19.059	1'52.223	253,5	9:38'15.228
10	23.189	36.596	58.272	2'17.782	4'15.839P	229,8	9:42'31.067
11	56.204	48.110	40.570	19.308	2'44.192P	123,9	9:45'15.259
12	22.318	34.895	30.119	18.946	1'46.278	264,7	9:47'01.537
13	22.095	34.905	30.035	18.830	1'45.865	266,7	9:48'47.402
14	22.101	34.854	30.167	18.917	1'46.039	267,3	9:50'33.441
15	21.951	35.169	30.403	19.387	1'46.910	268,0	9:52'20.351

67 A. DE GIACOMI (1'46.172)							
Giro	Seg.1	Seg.2	Seg.3	Seg.4	T. Giro	km/h	Local Time
1		44.250	40.541	27.486	C	109,0	
2	40.890	52.280	46.372	45.000	3'04.542CP	109,6	9:10'43.539
3	3'07.238	37.403	33.631	22.694	4'40.966P	170,9	9:15'24.505
4	22.990	36.079	30.958	19.146	1'49.173	231,3	9:17'13.678
5	22.476	35.231	30.059	18.788	1'46.554	240,5	9:19'00.232
6	22.236	35.159	32.157	41.739	2'11.291	257,1	9:21'11.523
7	58.606	42.242	32.948	19.014	2'32.810	70,9	9:23'44.333
8	22.165	35.365	30.180	18.861	1'46.571C	252,9	9:25'30.904
9	24.865	39.624	42.279	55.600	2'42.368CP	222,7	9:28'13.272
10	4'28.599	35.655	30.847	21.354	5'56.455P	167,2	9:34'09.727
11	22.878	35.311	30.341	19.051	1'47.581	254,7	9:35'57.308

88 L. PASTORELLI (1'46.452)							
Giro	Seg.1	Seg.2	Seg.3	Seg.4	T. Giro	km/h	Local Time
1		39.697	33.841	20.171		159,8	
2	24.624	36.612	31.749	21.255	1'54.240	227,4	9:04'07.021
3	23.573	37.534	31.287	19.415	1'51.809	251,2	9:05'58.830
4	22.662	35.084	30.386	3'26.675	4'54.807CP	264,7	9:10'53.637
5	2'57.625	37.475	33.747	23.554	4'32.401P	174,5	9:15'26.038
6	22.729	41.136	35.446	19.977	1'59.288	262,8	9:17'25.326
7	22.487	35.258	30.403	19.077	1'47.225	265,4	9:19'12.551
8	22.333	35.443	48.937	36.586	2'23.299	264,1	9:21'35.850
9	48.370	39.872	42.181	24.447	2'34.870	74,9	9:24'10.720
10	22.539	35.075	38.597	3'06.894	4'43.105CP	264,1	9:28'53.825
11	3'41.993	38.247	33.070	20.064	5'13.374P	168,0	9:34'07.199
12	24.008	36.329	37.603	23.230	2'01.170	260,2	9:36'08.369
13	22.201	35.002	30.205	19.563	1'46.971	265,4	9:37'55.340
14	22.249	35.189	35.923	29.947	2'03.308	267,3	9:39'58.648

01/06/2024

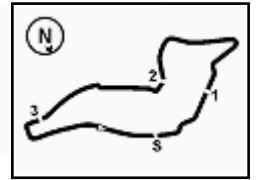
P = Box In/Out - C = Tempo Invalidato



PORSCHE

CARRERA CUP
ITALIA

3.4



Imola Circuit 4.909 m

6 / 6

ACI Racing Weekend Imola, 1-2 Giugno 2024
Porsche Carrera Cup Italia - Analisi Tempi Qualifiche

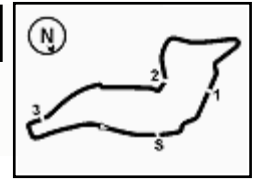
15	56.103	1'09.738	1'55.167	29.281	4'30.289	80,5	9:44'28.937
16	22.572	35.456	34.668	21.503	1'54.199	264,1	9:46'23.136
17	22.390	35.093	30.384	18.898	1'46.765	266,0	9:48'09.901
18	22.261	34.893	30.532	18.912	1'46.598	266,7	9:49'56.499
19	22.208	34.680	30.476	19.088	1'46.452	266,7	9:51'42.951
20	22.151	34.746	32.148	20.252	1'49.297	266,7	9:53'32.248

01/06/2024

P = Box In/Out - C = Tempo Invalidato

Powered by FICr PERUGIA TIMING





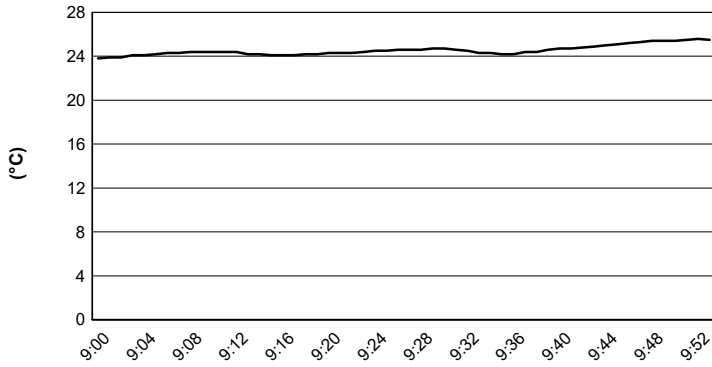
Imola Circuit 4.909 m

ACI Racing Weekend Imola, 1-2 Giugno 2024

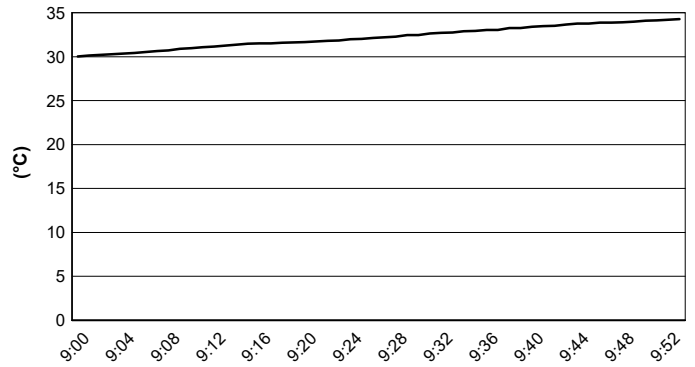
Porsche Carrera Cup Italia - Meteo Qualifiche

Session started 09:00 - Session ended 9:54

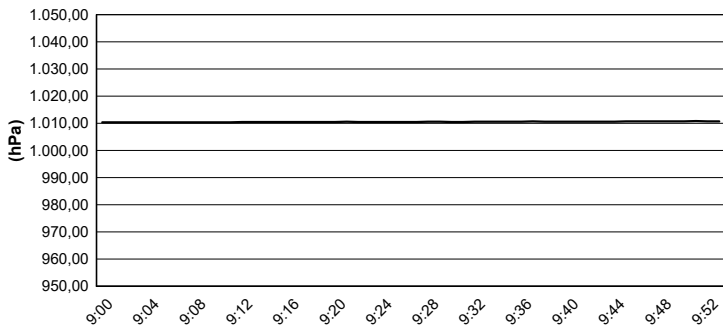
Air Temperature



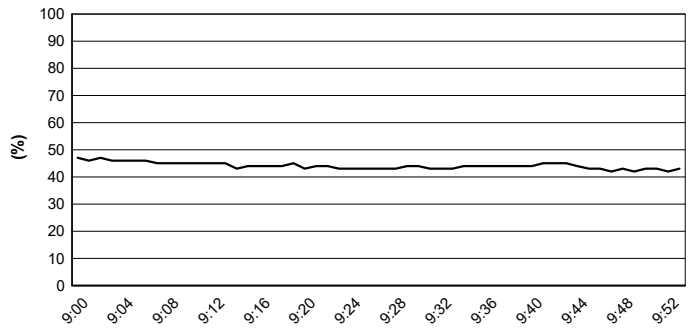
Track Temperature



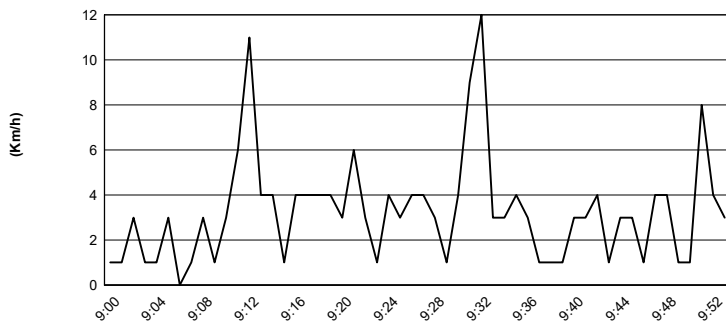
Air Pressure



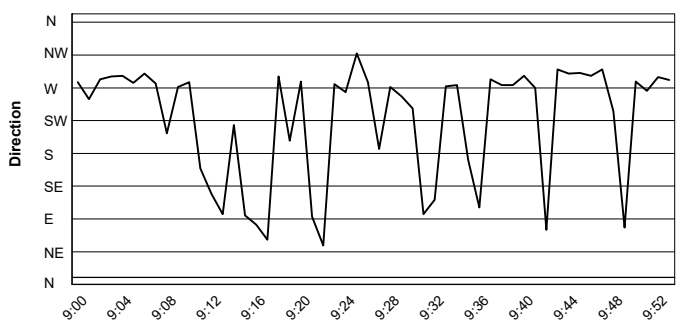
Humidity



Wind Speed

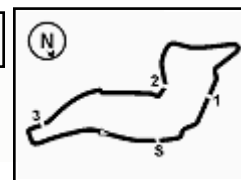


Wind Direction



01/06/2024





ACI Racing Weekend Imola, 1-2 Giugno 2024

Porsche Carrera Cup Italia - Classifica Secondo Miglior Tempo Qualifiche

Num.	Conduuttore	Naz	Concorrente	Team	Auto	Classe	Tempo	Dist.	Rel.	Giri
1	1 TEN VOORDE Larry	NLD	Enrico Fulgenzi Racing	Enrico Fulgenzi Racing	Porsche 911 GT3 CUP 992		1'43.318			14
2	8 MASTERS Keagan	ZAF	Ombra Racing	Team Q8 Hi-Perform	Porsche 911 GT3 CUP 992		1'43.570	0.252	0.252	15
3	26 KLEIN Marvin	FRA	Target Competition	Target Competition	Porsche 911 GT3 CUP 992		1'43.816	0.498	0.246	13
4	21 BERTONELLI Diego	ITA	The Driving Experiences	The Driving Experiences	Porsche 911 GT3 CUP 992		1'44.156	0.838	0.340	12
5	15 FESTANTE Aldo	ITA	Dinamic Motorsport	Dinamic Motorsport	Porsche 911 GT3 CUP 992		1'44.233	0.915	0.077	14
6	40 STIAK Janne	DEU	Target Competition	Target Competition	Porsche 911 GT3 CUP 992		1'44.304	0.986	0.071	13
7	12 ZENDELI Lirim	DEU	Ombra Racing	Ombra Racing	Porsche 911 GT3 CUP 992	R	1'44.366	1.048	0.062	16
8	32 QUARESMINI Gianmarco	ITA	Tsunami RT	Tsunami RT	Porsche 911 GT3 CUP 992		1'44.406	1.088	0.040	13
9	3 CERQUI Alberto	ITA	BeDriver	BeDriver	Porsche 911 GT3 CUP 992		1'44.710	1.392	0.304	16
10	25 GREGOR Daniel	DEU	The Driving Experiences	The Driving Experiences	Porsche 911 GT3 CUP 992	R	1'45.015	1.697	0.305	14
11	33 FELBERMAYR Horst Felix	AUT	The Driving Experiences	The Driving Experiences	Porsche 911 GT3 CUP 992		1'45.135	1.817	0.120	12
12	10 ARMANNI Pietro	ITA	Prima Ghinzani Motorsport	Prima Ghinzani Motorsport	Porsche 911 GT3 CUP 992		1'45.205	1.887	0.070	14
13	11 GRAY Olivier	GBR	Ombra Racing	Ombra Racing	Porsche 911 GT3 CUP 992	R	1'45.342	2.024	0.137	16
14	14 GIACON Steven	ITA	Scuderia Villorba Corse	Scuderia Villorba Corse	Porsche 911 GT3 CUP 992	R	1'45.394	2.076	0.052	17
15	44 OLIVIERI Flavio	ITA	Raptor Engineering	Raptor Engineering	Porsche 911 GT3 CUP 992	R	1'45.660	2.342	0.266	18
16	28 BRASCHI Francesco	ITA	Dinamic Motorsport	Dinamic Motorsport	Porsche 911 GT3 CUP 992	R	1'45.684	2.366	0.024	14
17	24 FANT Filippo	ITA	Team Malucelli	Team Malucelli	Porsche 911 GT3 CUP 992	R	1'45.694	2.376	0.010	19
18	7 HALL Bayley	AUS	BeDriver	BeDriver	Porsche 911 GT3 CUP 992		1'45.752	2.434	0.058	20
19	70 GIORGI Gianluca	ITA	BeDriver	BeDriver	Porsche 911 GT3 CUP 992	MC	1'46.039	2.721	0.287	14
20	67 DE GIACOMI Alex	ITA	Tsunami RT	Tsunami RT	Porsche 911 GT3 CUP 992	MC	1'46.186	2.868	0.147	15
21	51 GNEMMI Paolo	ITA	Ebimotors	Ebimotors	Porsche 911 GT3 CUP 992	MC	1'46.299	2.981	0.113	16
22	88 PASTORELLI Luca	ITA	Dinamic Motorsport	Dinamic Motorsport	Porsche 911 GT3 CUP 992	MC	1'46.598	3.280	0.299	19
23	56 BRUSA Cesare	ITA	Prima Ghinzani Motorsport	Prima Ghinzani Motorsport	Porsche 911 GT3 CUP 992	MC	1'46.689	3.371	0.091	18
24	50 FENICI Francesco Maria	ITA	Raptor Engineering	Raptor Engineering	Porsche 911 GT3 CUP 992	MC	1'46.823	3.505	0.134	17
25	52 DE AMICIS Alberto	ITA	Ebimotors	Ebimotors	Porsche 911 GT3 CUP 992	MC	1'46.867	3.549	0.044	15
26	2 NORDEN Sacha	NLD	Enrico Fulgenzi Racing	Enrico Fulgenzi Racing	Porsche 911 GT3 CUP 992		1'46.991	3.673	0.124	11
27	46 PUJATTI Nicholas	ITA	Scuderia Villorba Corse	Scuderia Villorba Corse	Porsche 911 GT3 CUP 992	R	1'47.588	4.270	0.597	15
28	55 INTRONA Ilarione	ITA	Prima Ghinzani Motorsport	Prima Ghinzani Motorsport	Porsche 911 GT3 CUP 992	MC	1'47.688	4.370	0.100	18
29	69 MONTAGNESE Massimiliano	ITA	Team Malucelli	Team Malucelli	Porsche 911 GT3 CUP 992	MC	1'47.795	4.477	0.107	19
30	19 IMPERATO Anthony	USA	Ombra Racing	Ombra Racing	Porsche 911 GT3 CUP 992		1'48.922	5.604	1.127	16
31	38 IAQUINTA Simone	ITA	Prima Ghinzani Motorsport	Prima Ghinzani Motorsport	Porsche 911 GT3 CUP 992		1'51.628	8.310	2.706	7
32	17 SCHURING Flynt	NLD	Enrico Fulgenzi Racing	Enrico Fulgenzi Racing	Porsche 911 GT3 CUP 992		1'51.702	8.384	0.074	9
33	54 STEFANELLI Stefano	ITA	Team Malucelli	Team Malucelli	Porsche 911 GT3 CUP 992	MC				18

Umidità	44%	ARIA	24°C
Condizioni	DRY	Pista	32°C

Stewards : Ronny Guarini Franco Leoni Nicola Cadei

01/06/2024 Inizio 09:00 Fine 09:54

Esposta alle:

